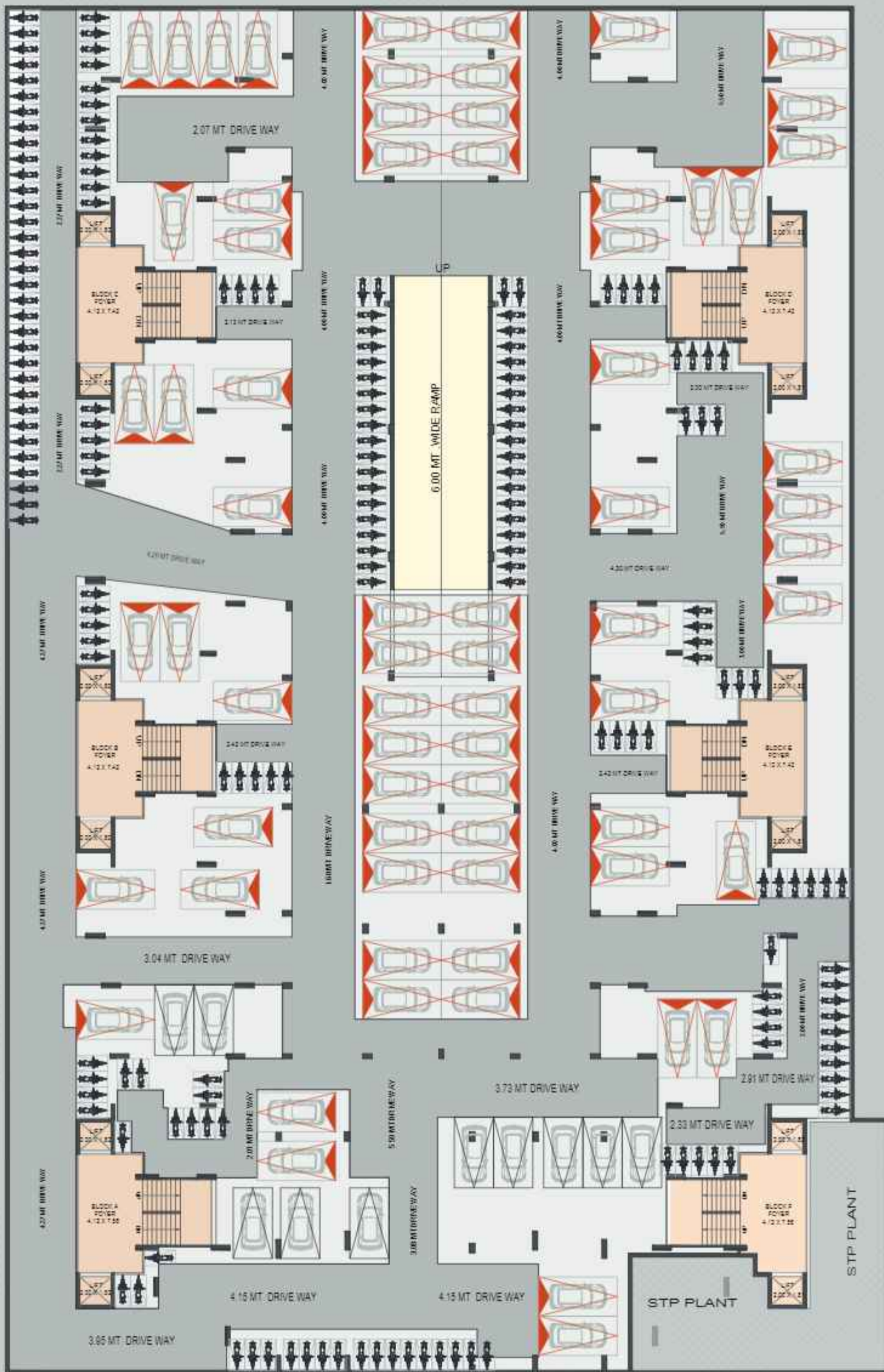




CELESTIAL
LIVING

3 BHK Apartments

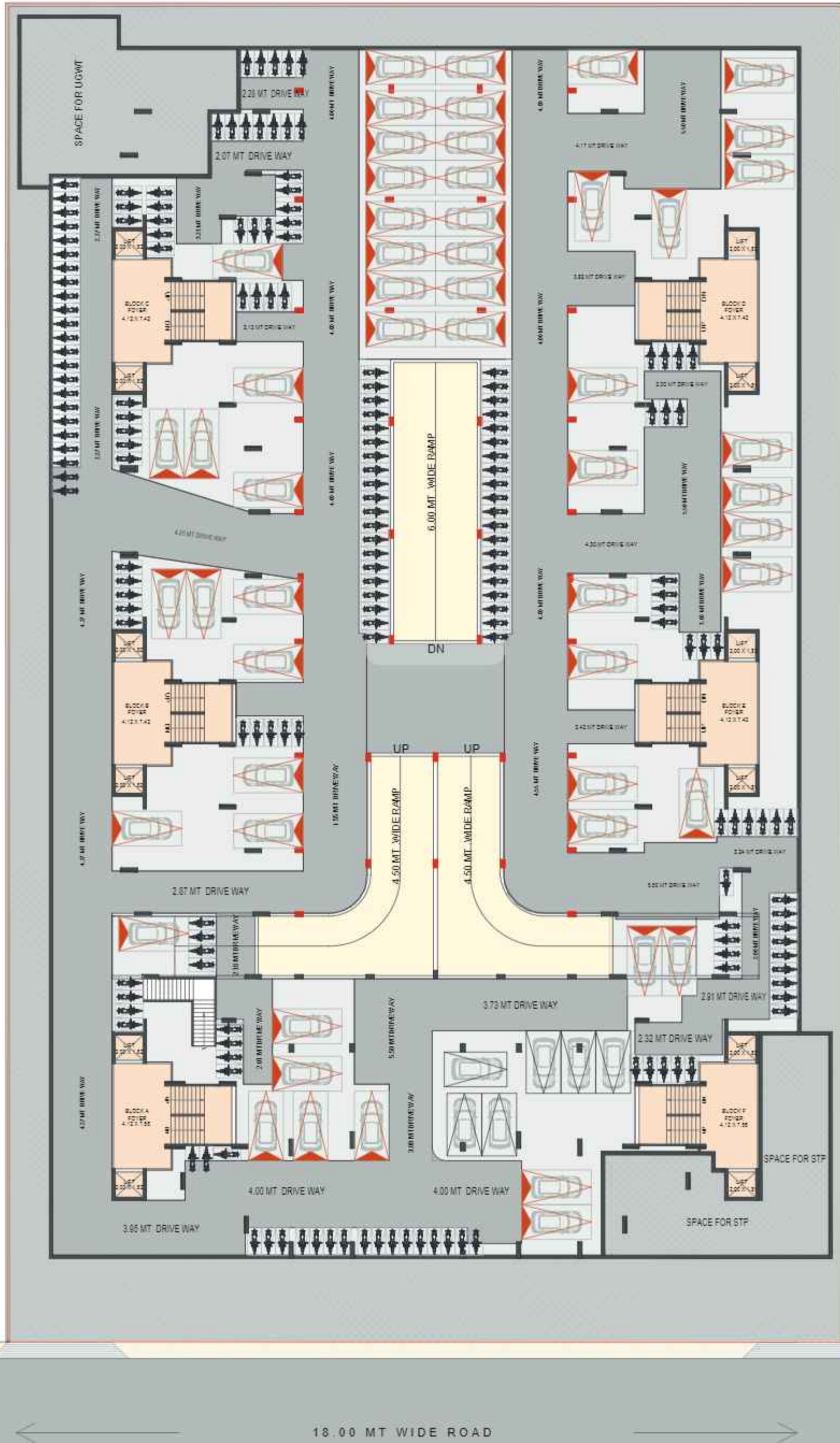





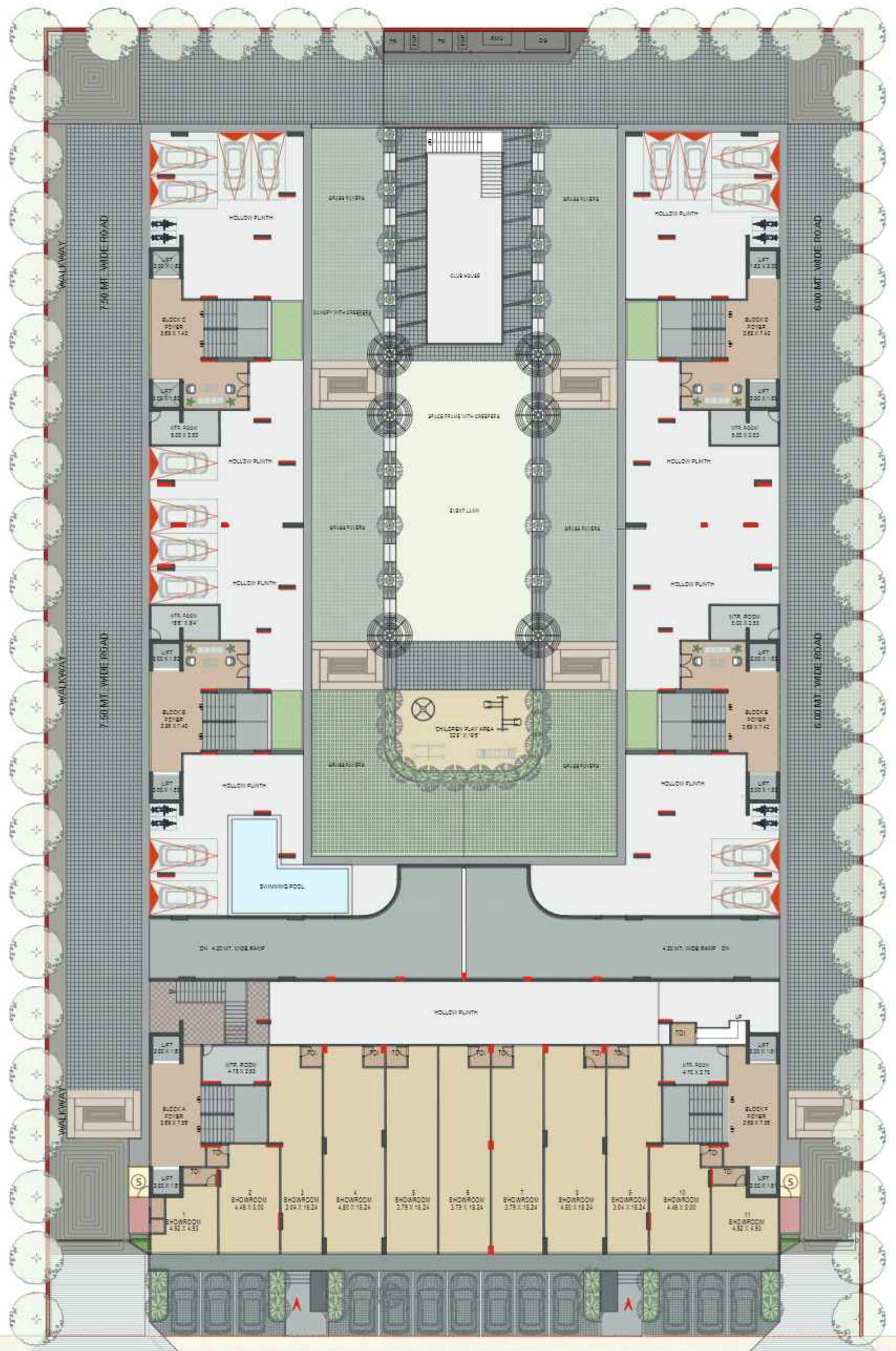
← 18.00 MT WIDE ROAD →



BASEMENT - 2 (79 CARS)
PROPOSED APARTMENT SCHEME AT AHMEDABAD




BASEMENT - 1 (61 CARS)
PROPOSED APARTMENT SCHEME AT AHMEDABAD



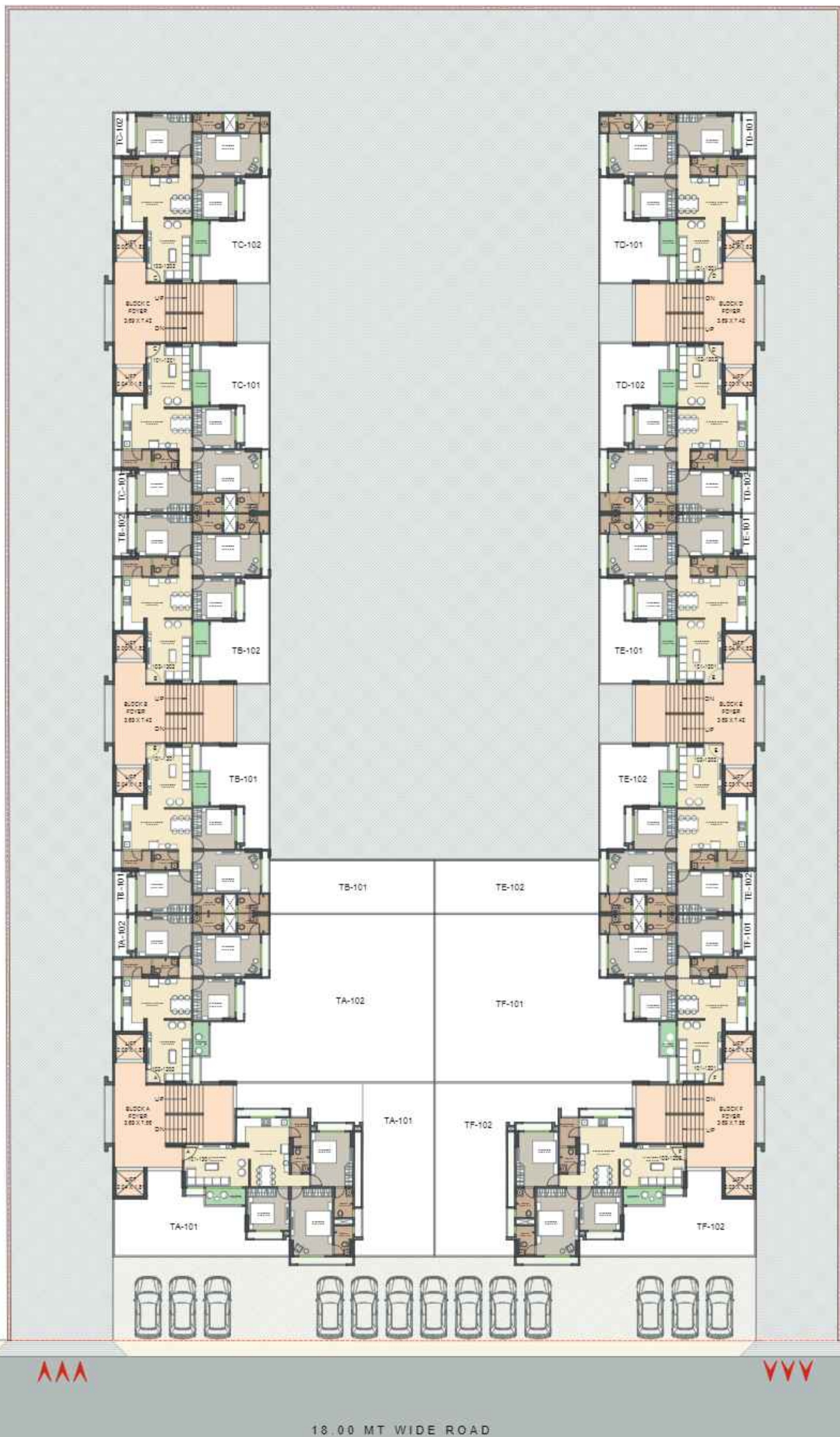
ENTRY

EXIT

18.00 MT WIDE ROAD



GROUND FLOOR GENERAL DEVELOPMENT PLAN
PROPOSED APARTMENT SCHEME AT AHMEDABAD



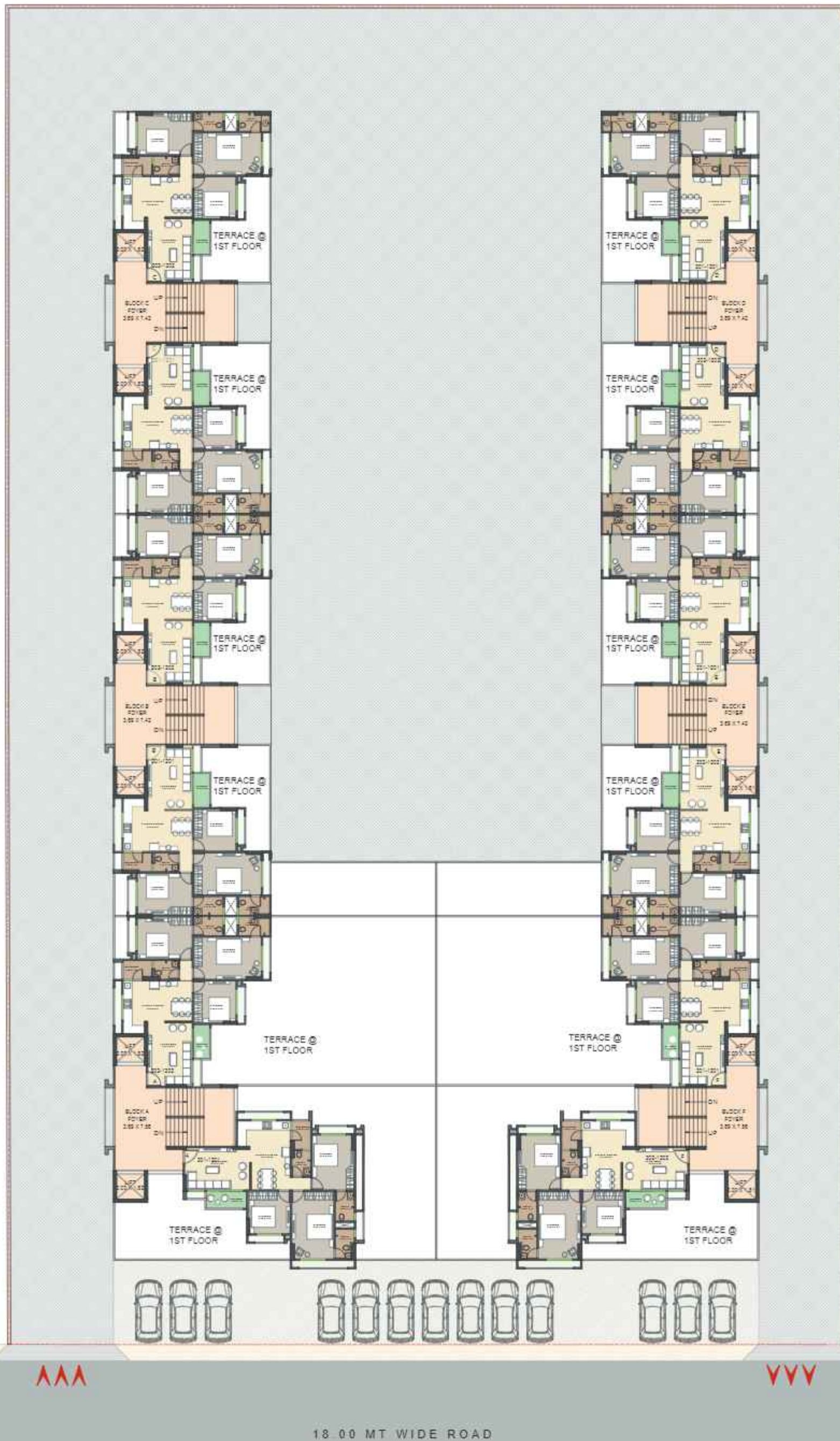
AAA

VVV

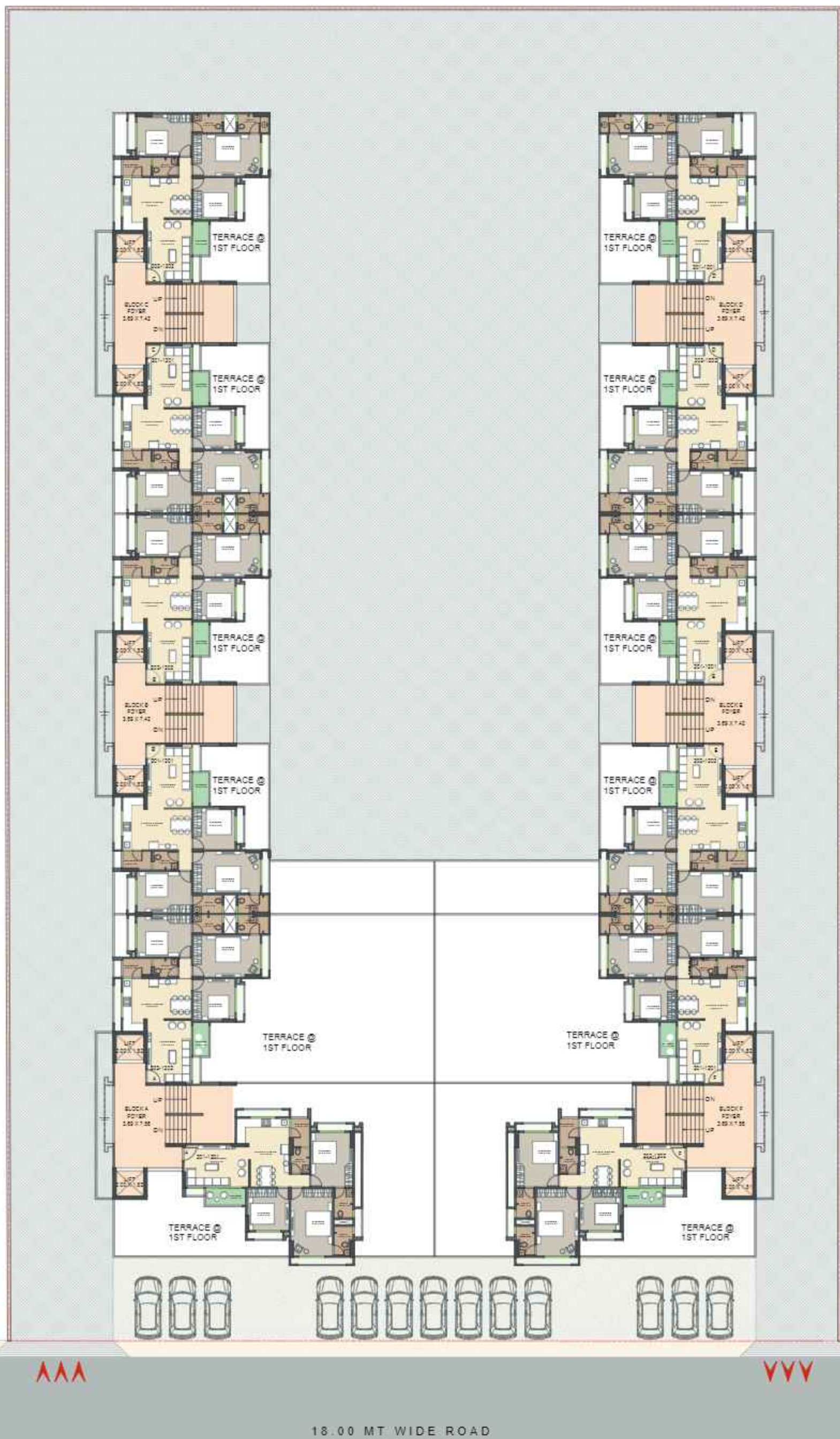
18.00 MT WIDE ROAD



1ST FLOOR PLAN
PROPOSED APARTMENT SCHEME AT AHMEDABAD



2ND TO 5TH, 7TH, 9TH TO 12TH FLOOR PLAN
 PROPOSED APARTMENT SCHEME AT AHMEDABAD



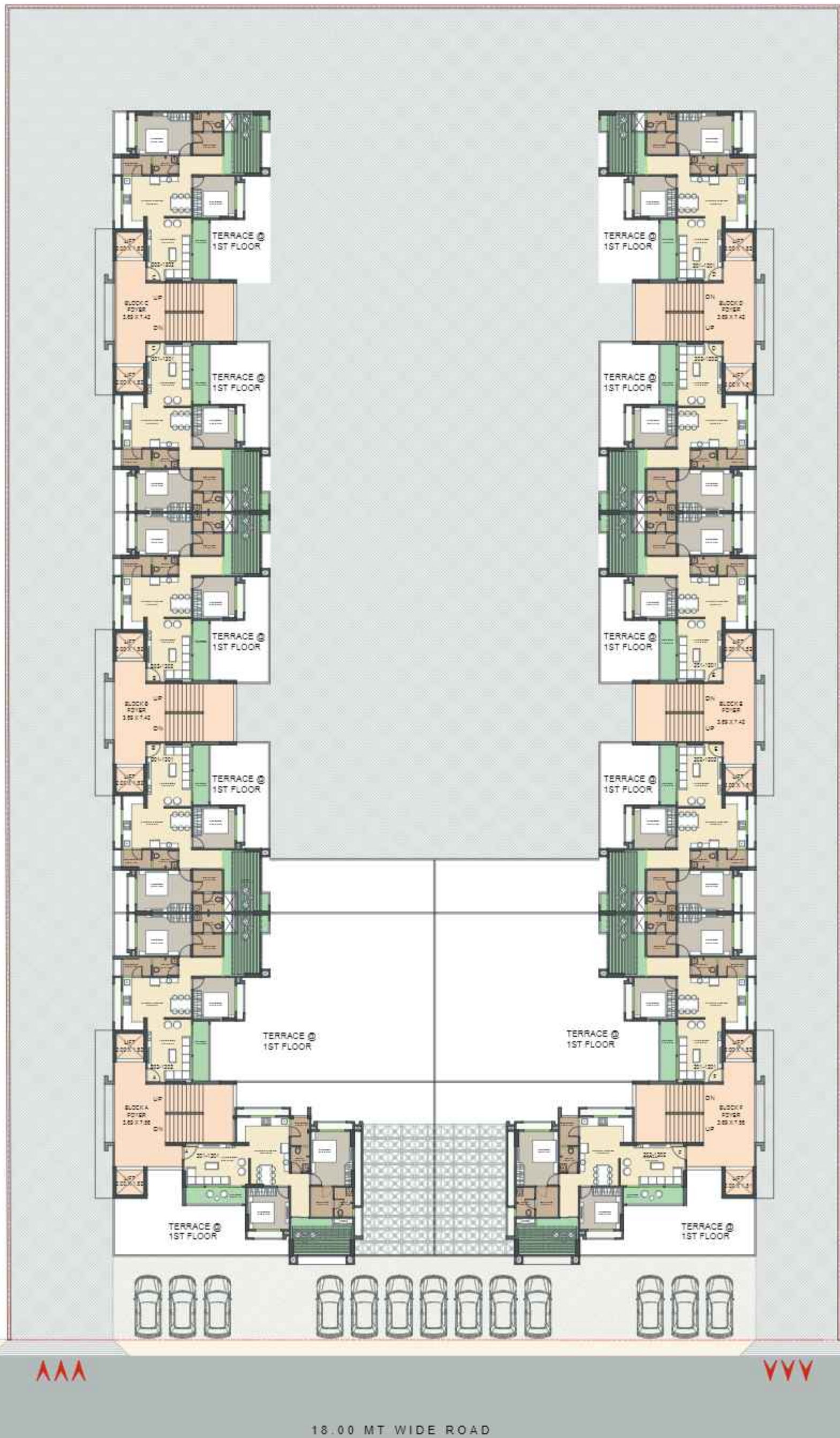
AAA

VVV

18.00 MT WIDE ROAD



6th , 8th & 13th FLOOR PLAN
 PROPOSED APARTMENT SCHEME AT AHMEDABAD



AAA

VVV

18.00 MT WIDE ROAD



14TH FLOOR PLAN
PROPOSED APARTMENT SCHEME AT AHMEDABAD



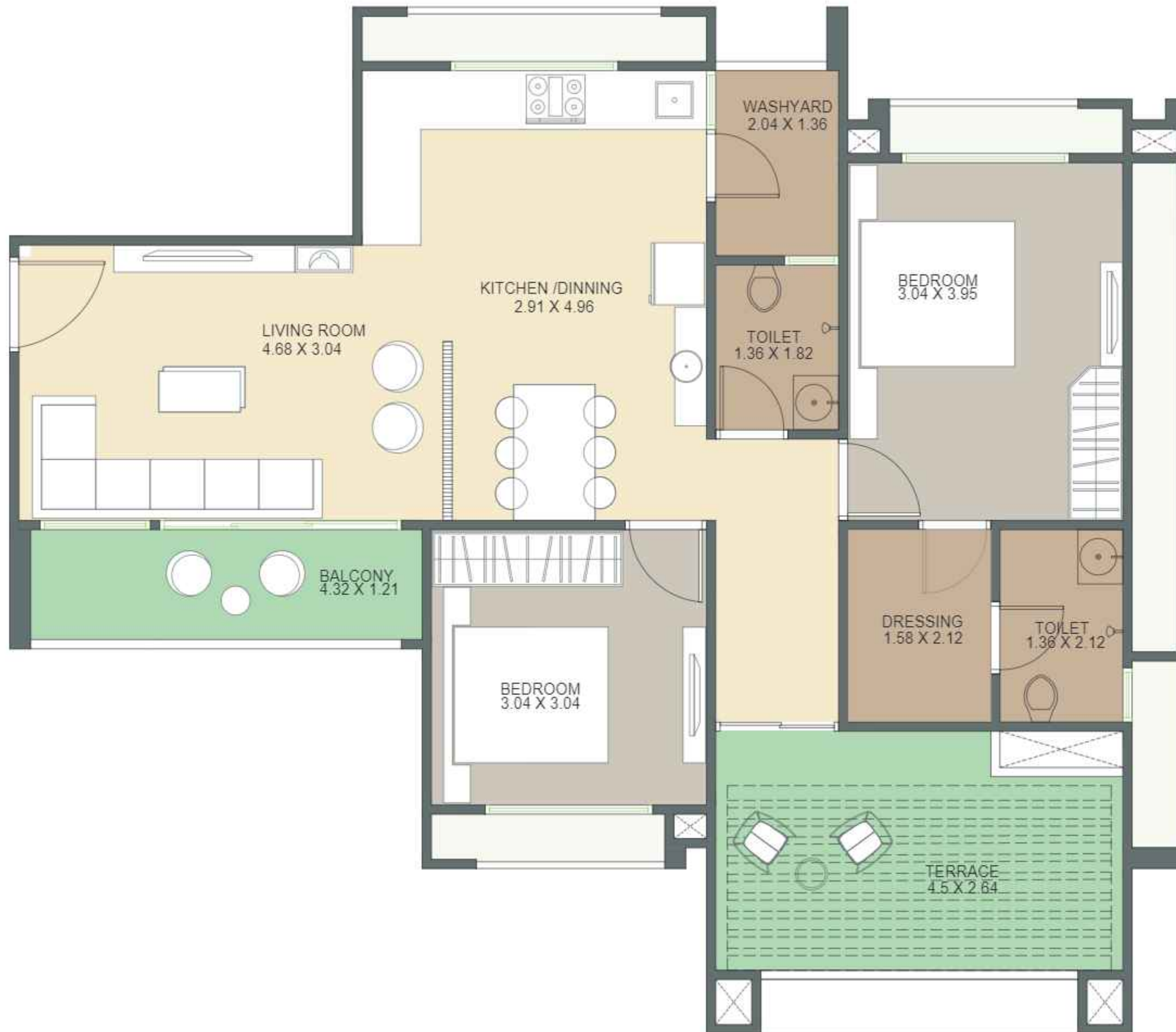
3BHK UNIT PLAN (TYPICAL FLOOR BLOCK-B,C,D & E)
 PROPOSED APARTMENT SCHEME AT AHMEDABAD



3BHK UNIT PLAN (TYPICAL FLOOR BLOCK-A&F)
 PROPOSED APARTMENT SCHEME AT AHMEDABAD



2BHK UNIT PLAN (14th FLOOR BLOCK-B,C,D & E)
 PROPOSED APARTMENT SCHEME AT AHMEDABAD



2BHK UNIT PLAN (14th floor BLOCK-A&F)
PROPOSED APARTMENT SCHEME AT AHMEDABAD

Location



SCAN FOR LOCATION



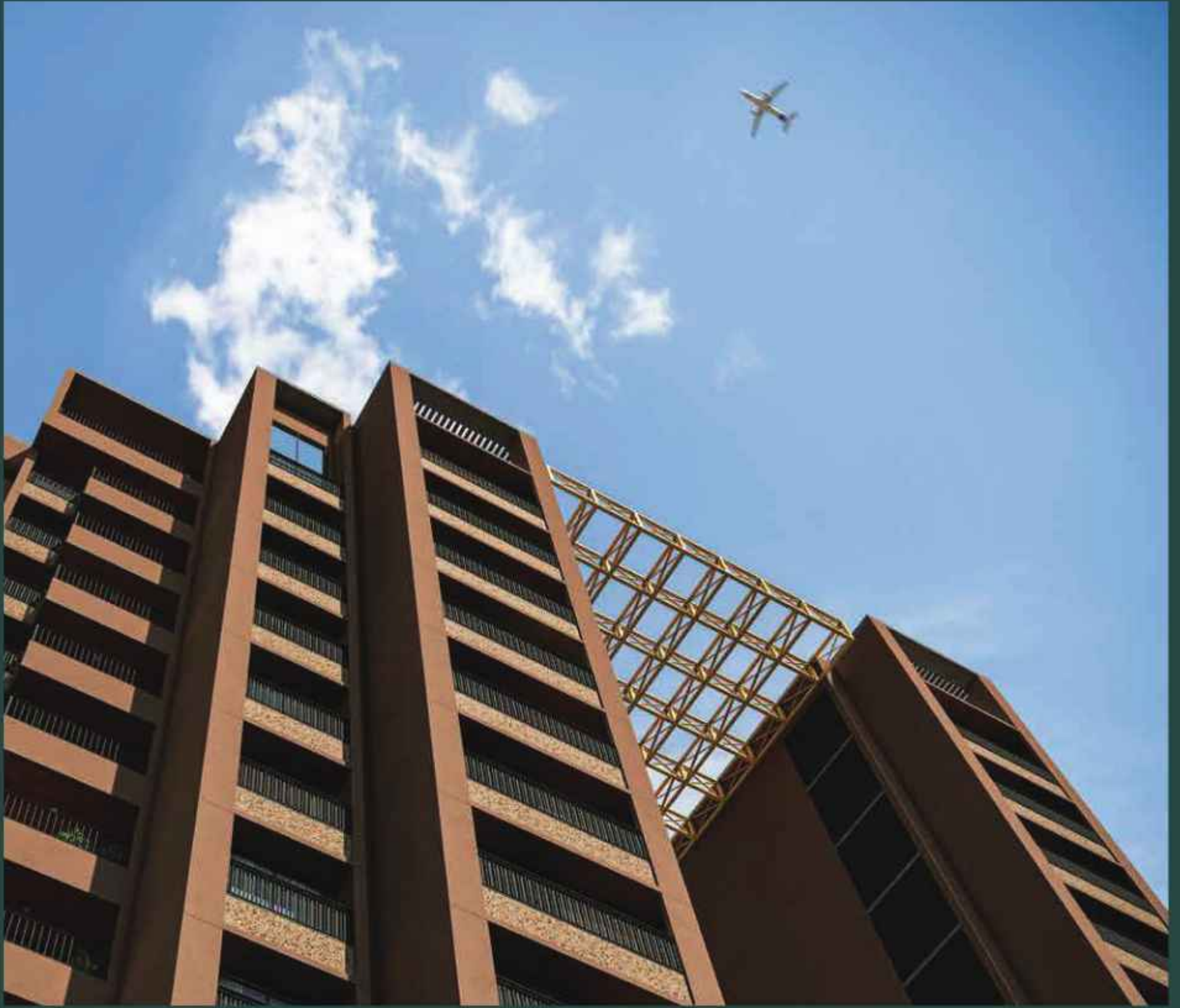
Celestial Living

Nr. Shilaj Sky, Small Canal Road, Sardar Patel Ring Road, Shilaj, Ahmedabad, Gujarat - 380059.

www.gujrera.gujarat.gov.in

Thaltej Chokdi

Disclaimer : The Developers reserve the rights to change or revised the project or any details there or Government levies like stamp duty, registration charges & other legal expenses like AUDA, GEB charges, GST, etc. are to be borne by the members. This brochure is not to be treated as a part of legal document. It is only for presentation purpose, easy display and understanding the project. Only internal charges shall be allowed with prior permission and shall be charged extra in advance. The sizes mentioned in the unit plan may vary slightly in actual. The photographs and artistic impressions are for reference only.



Specifications



M.E.P. Systems

- Concealed & flame retardant ISI rated copper wiring
- Modular switches in living, dining, and all bedrooms
- Corrosion resistant and leak proof CPVC/ UPVC pipes & fittings
- Water supply through AMC lines & Bore-well as well
- CCTV installation in all common areas, with a surveillance screen
- 24x7 water supply with adequate pressure for each apartment



Floorings

- Hi-end Vitrified tiles in Living, Dining, Kitchen & Common Passages
- Flooring on Terrace with waterproofing treatment
- Granite/ Marble/ Vitrified tiles at steps & risers
- High quality parking tiles



Structure & Fittings

- RCC frame structure with earthquake resistant design
- UPVC/ Aluminum Windows with safety bars & Granite Sills
- Internal doors with plywood frames and water proof flush doors
- Plumbing & sanitary fixtures by international brands
- Double coat plaster on external walls with texture finish
- Single coat plaster on internal walls & ceilings
- All internal walls with putty finish
- Long lasting & weather resistant acrylic paint on all external walls
- Acrylic plastic emulsion paints in all common areas

Organiser



Celestial Living

Nr. Shilaj Sky, Small Canal
Road, Sardar Patel Ring Road, Shilaj,
Ahmedabad, Gujarat - 380059.

Architect

