

Journey towards **GREEN** Excellence... since 1981!



SMART  
LIFE

## Sangath Infrastructures Pvt. Ltd

site : block No.41H, Zone-04, Road 4A, Gujarat International Finance Tec-City  
(GIFT CITY), Gandhinagar, Gujarat 382355.

office : Nr. Dcis Circle, B/w Vaishnow devi to Airport, 200, Sardar Patel Ring Rd,  
Chandkheda, Ahmedabad-382424.

call : +91 743 590 9293, +91 932 833 3575, +91 931 380 6913

email : smartlife@sangathinfra.com

web : www.sangathipl.com

rera : phase-1 rera no.: pr/gj/gandhinagar/gandhinagar/others/maa07345/190820  
phase-2 rera no.: pr/gj/gandhinagar/gandhinagar/others/maa07381/250820  
www.gujrera.gujarat.gov.in

u l t r a s p a c i o u s

@GIFT CITY, GANDHINAGAR

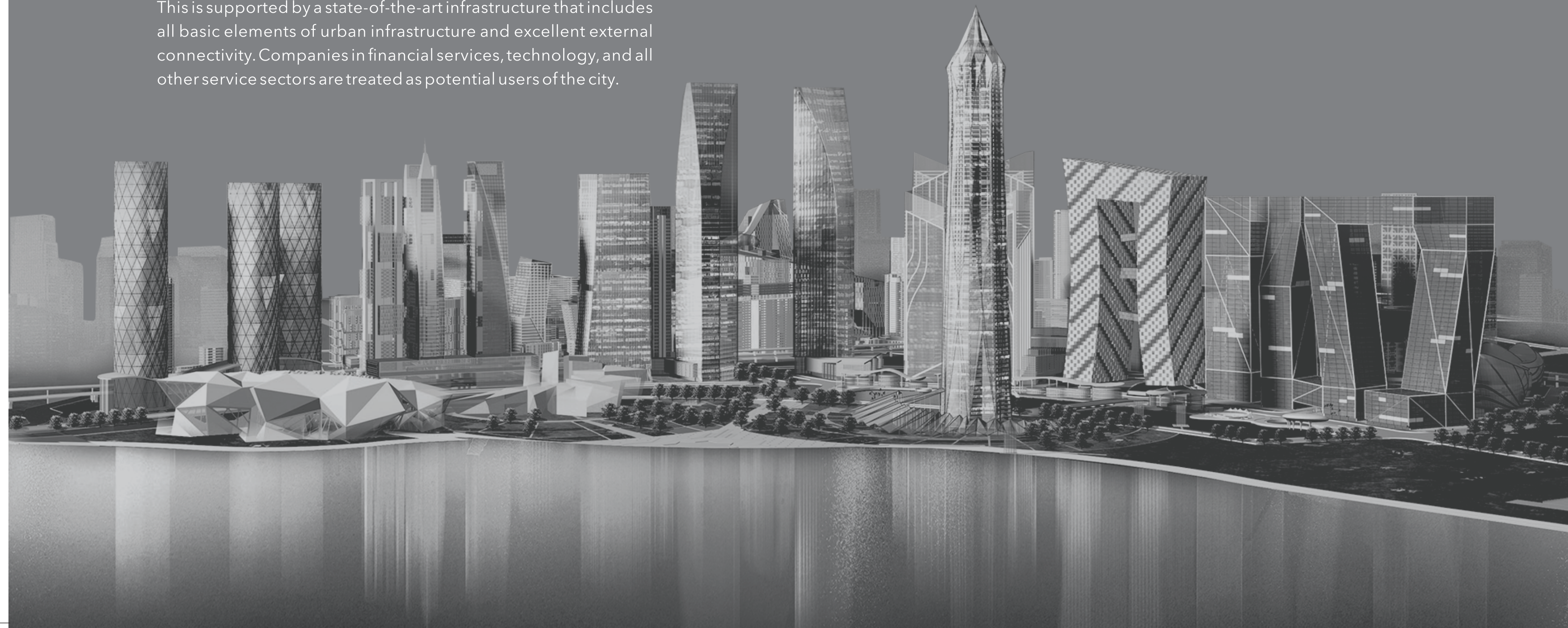


The Gujarat government has recognized the state's potential as a hub for the financial services industry and has formulated a mega project to realize this vision. Therefore, the land between Ahmedabad, the commercial capital of the state, and Gandhinagar, the administrative capital of the state, has been identified for Central Business District (CBD) development.

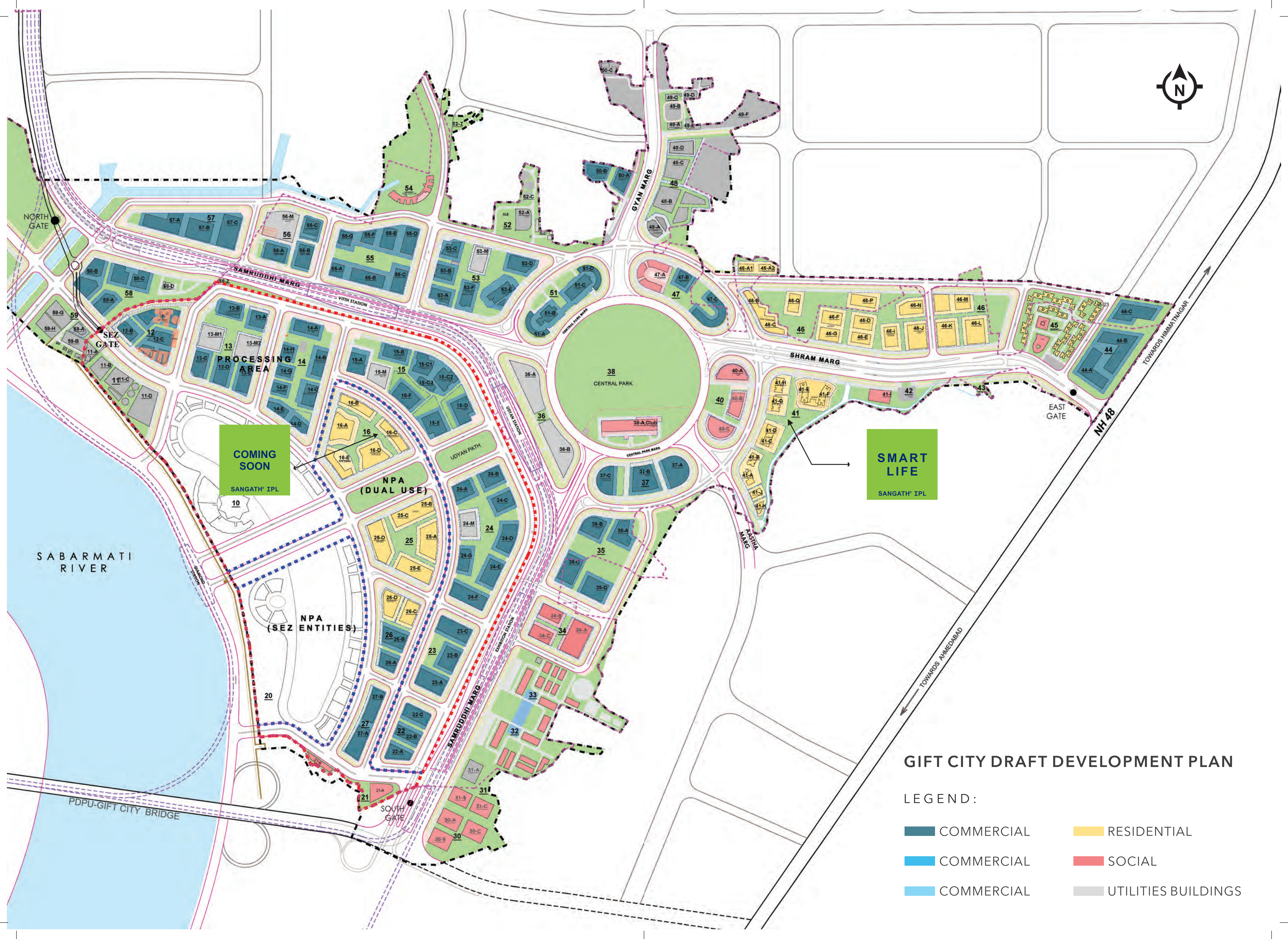
The city is planned on 886 acres of land with a built-up area of 62 million square feet including offices, apartments, schools, hospitals, hotels, clubs, retail stores and various recreational facilities, Gujarat International Finance Tec-City (GIFT). GIFT City is India's first emerging global financial and IT services hub designed to match or exceed globally rated business districts. This is supported by a state-of-the-art infrastructure that includes all basic elements of urban infrastructure and excellent external connectivity. Companies in financial services, technology, and all other service sectors are treated as potential users of the city.

GIFT City is transforming Gujarat's economy and will keep India on the world map as a center of excellence for financial and IT/ITeS services. Creating great jobs in Gujarat's service sector is also one of the main reasons for establishing GIFT City.

GIFT City is on its way to become a hub for Offshore Banking, Capital markets, Offshore Asset management, Offshore Insurance, Ancillary services, IT services, ITes/BPO services. GIFT City is a big upgrade in lifestyle with the world class infrastructure that includes, Solid Waste Management System, District Cooling System, Utility tunnel - making it a digging free city and many more.







**COMING SOON**  
SANGATH IPL

**SMART LIFE**  
SANGATH IPL

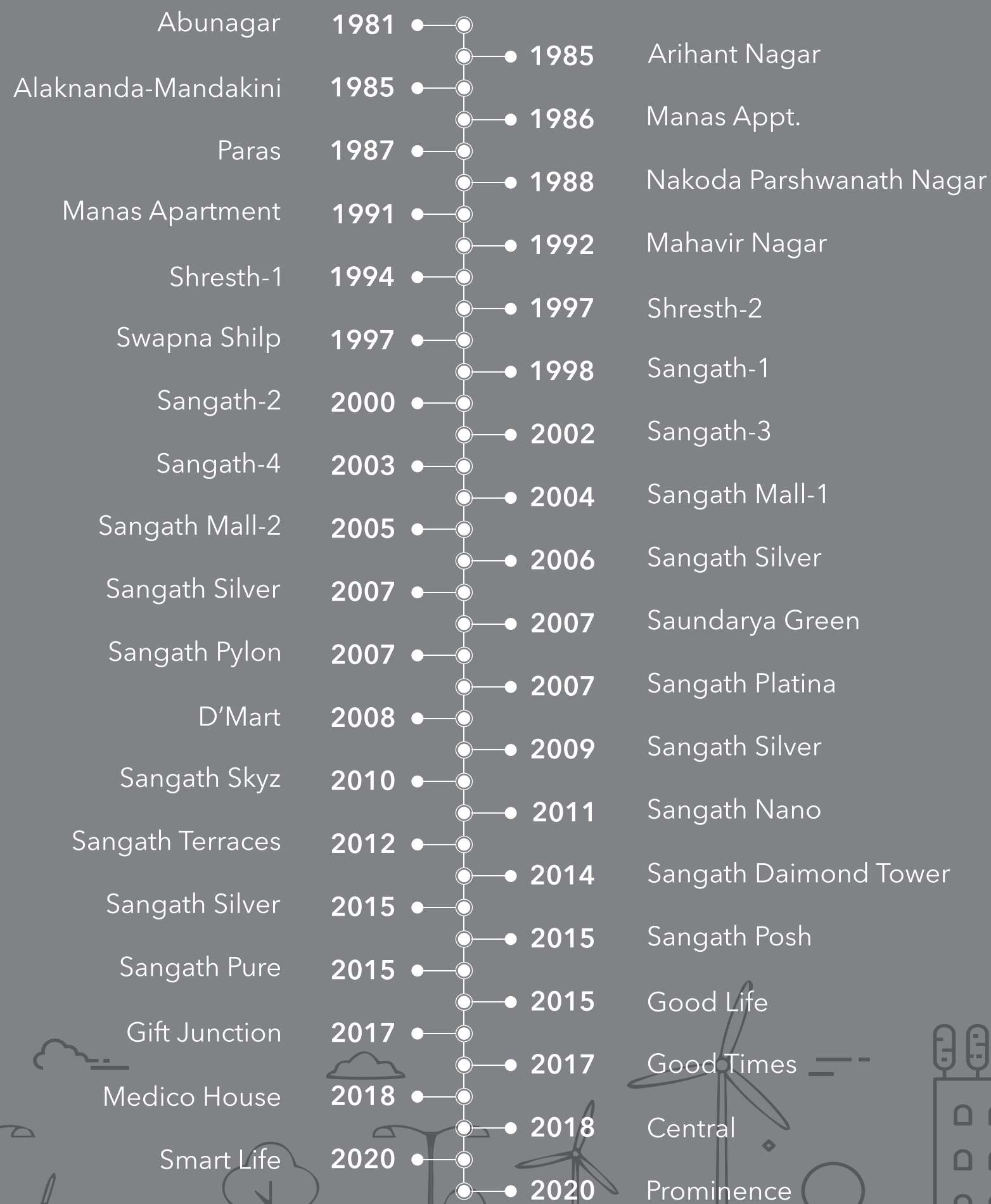
### GIFT CITY DRAFT DEVELOPMENT PLAN

LEGEND :

- COMMERCIAL
- COMMERCIAL
- COMMERCIAL
- RESIDENTIAL
- SOCIAL
- UTILITIES BUILDINGS



## 41 YEARS OF BUILDING EXCELLENCE



## SANGATH IPL GROUP INITIATIVES

- carpet + wall area since 2009
- green building certified projects
- renewable energy: apartments with wind + solar power
- earthquake resistant RCC shear wall structures
- usage of "A" class branded standard quality materials only
- smart usage of resources warranty for homes
- after sales services through online CRM
- exploring location
- creating landmark





# LIVE INFINITE!



## SPACE

The Delight Of Living Spacious, Making Joy Infinite!

## VIEW

The Influence Of Architecture Making Horizons Infinite...

## LOCATION

Global Destination & Proximity Of Twin City Making Convenience Infinite...

## AMENITIES

Luxurious Amenities Making Lavishness Infinite...

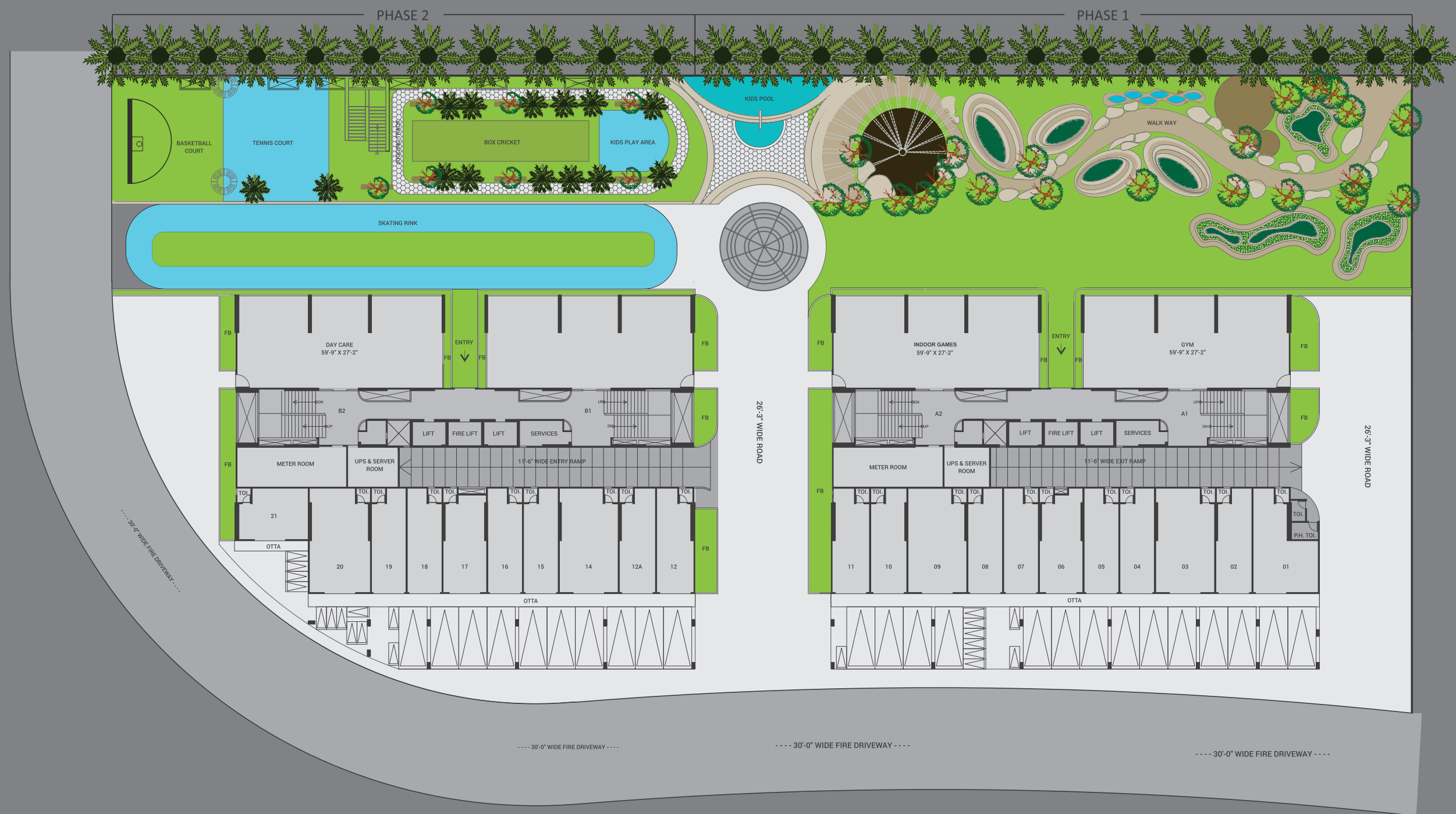
## INNOVATIONS

Thoughtful Initiatives Making Comfort Infinite...

## ELEVATION

The Grandeur Of Elevation Making Stature Infinite...





 SITE LAYOUT

Ground Floor Area Table

TOWER	FLOOR	SHOPS	RERA CARPET AREA
B1 & B2	Ground Floor	12	327.00
		12A	319.00
		14	517.00
		15	350.00
		16	306.00
		17	365.00
		18	305.00
		19	305.00
		20	535.00
		21	310.00



### SPECIFICATIONS FOR RESIDENTIAL:

- flooring 2'X2' vitrified tiles
- kitchen 2' wide black granite platform
- toilet full height glazed tiles dado
- internal wall finish brila putty
- adequate plumbing & electric point
- spacious common foyer & stair
- all other doors with wooden frames, flush door with paints
- every flat with one parking space
- earthquake resistant R.C.C shear wall monolithic structure
- long lasting rich external finishes of Exposed R.C.C., terrazzo, aluminium louvers
- positive inviting entry doors(east west)
- decorative main doors

### SPECIFICATIONS FOR CONVENIENT SHOP

- flooring 2'x2' vitrified tiles
- exposed RCC ceiling, white birla putti finish
- attached toilet
- covered parking at ground floor for visitor & convenient shopping in the front.

### ROOF TOP AMENITIES

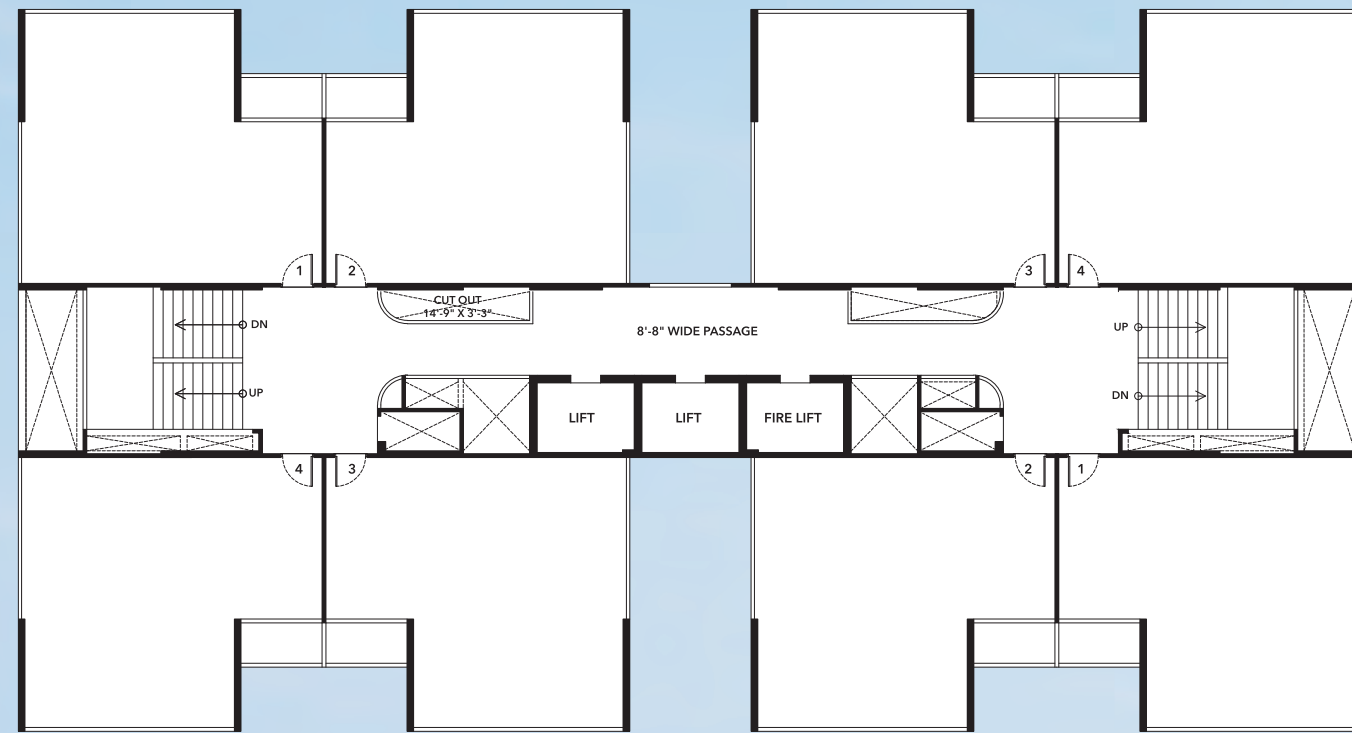
- solar Rooftop
- lounge
- meditation area
- sky/fire bridge on mid floors
- golf putting green
- rooftop jogging track
- kids play zone
- Sundeck

### PHASE 2 FIRST FLOOR PLAN



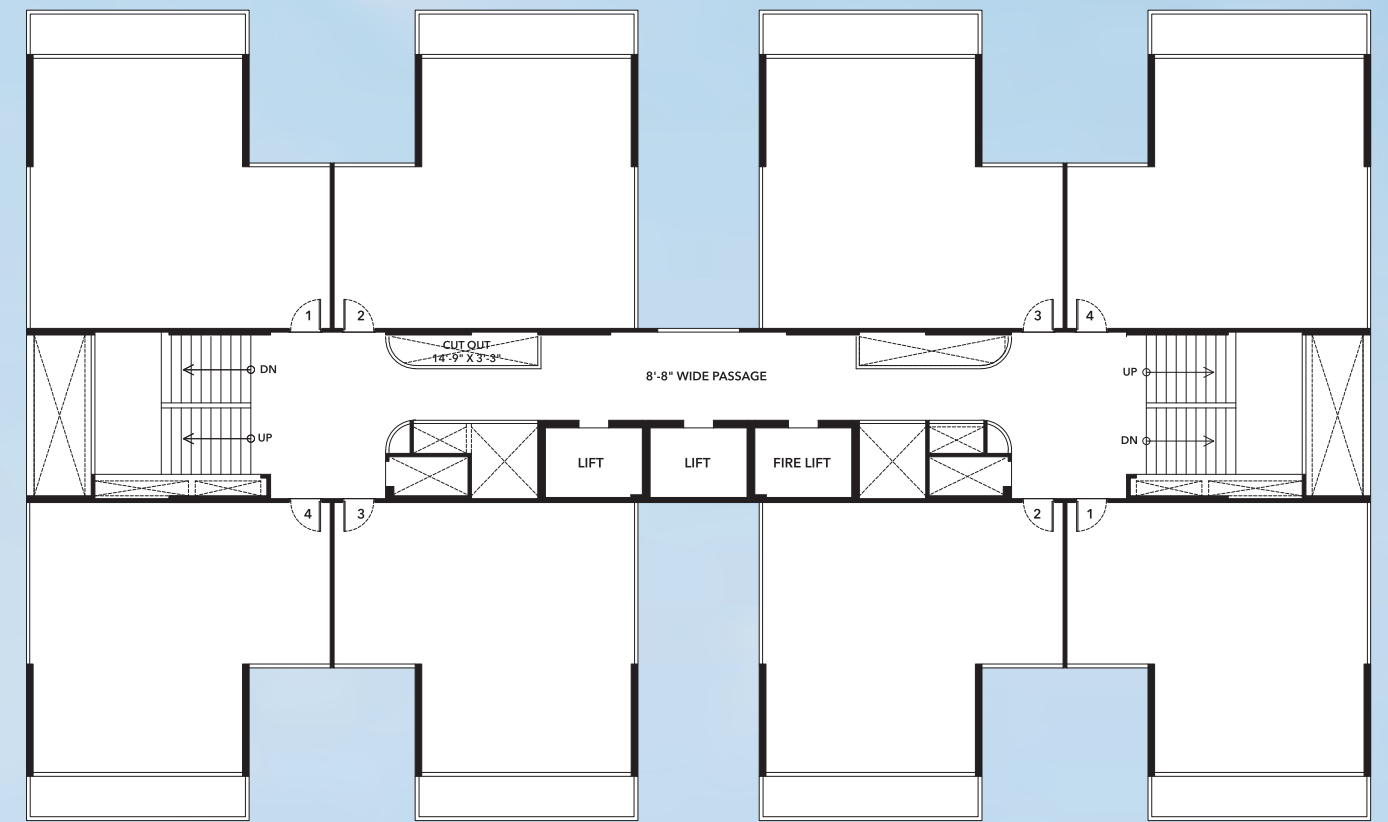
FIRST FLOOR AREA TABLE		
BLOCK NO.	UNIT NO.	PERSONAL OPEN TERRACE CARPET IN SQ. FT
B1	1	1190.00
	2	1561.00
B2	3	1503.00
	4	651.00





### EVEN FLOOR PLAN

2nd, 4th, 6th, 8th, 10th, 12th, 14th, 16th, 18th, 20th Floor Plan



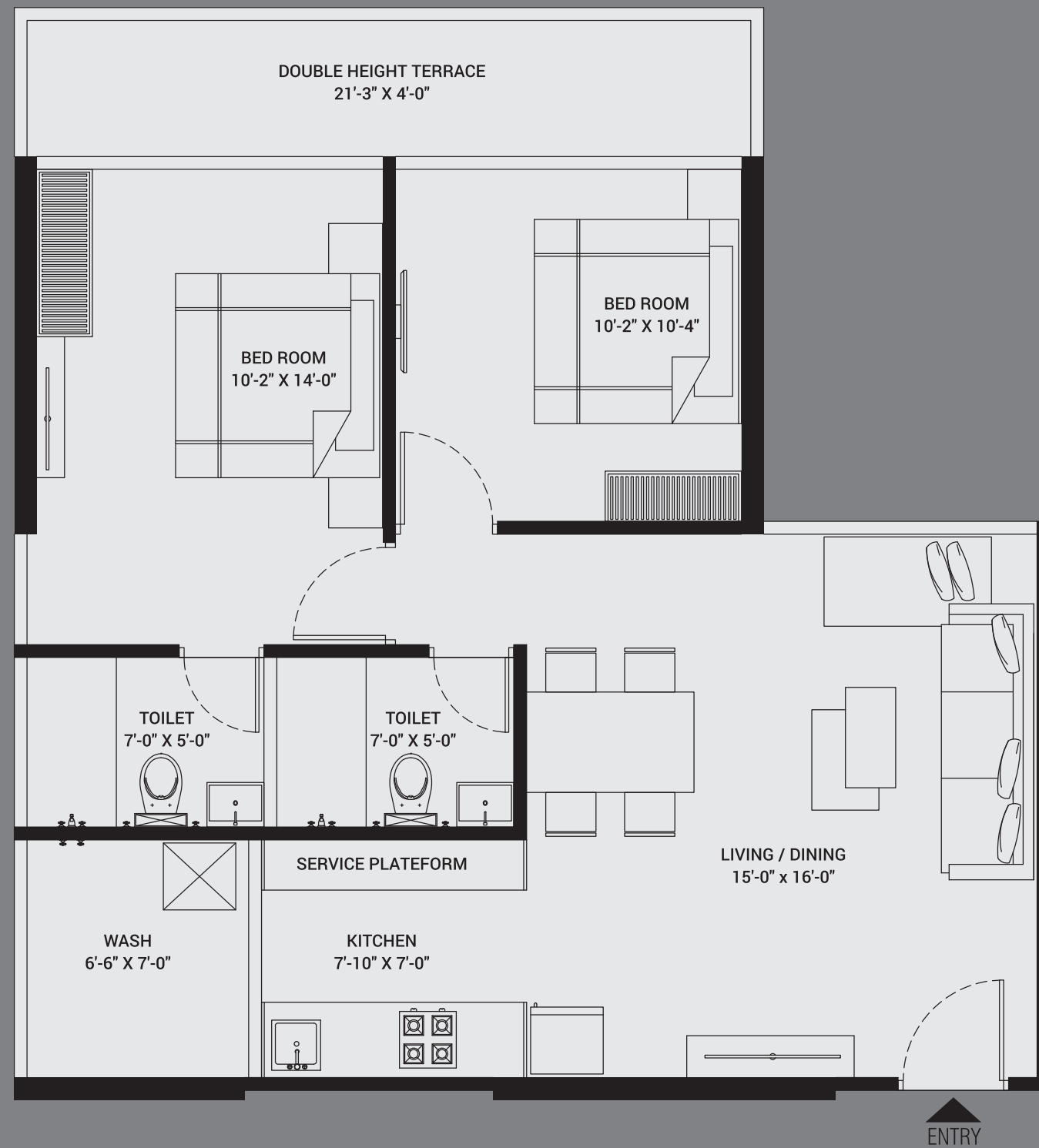
### ODD FLOOR PLAN

3rd, 5th, 7th, 9th, 11th, 13th, 15th, 17th, 19th, 21st Floor Plan



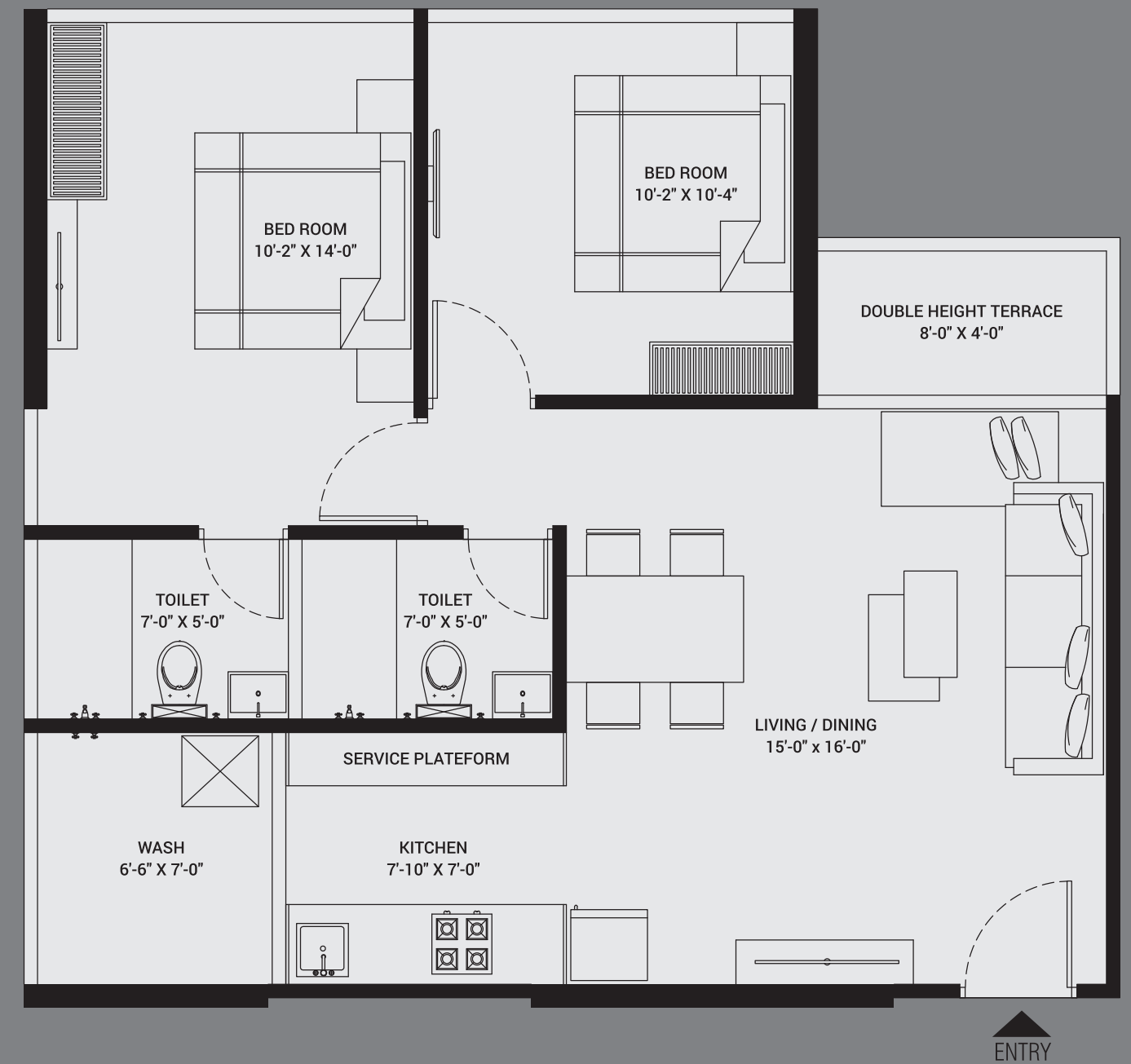


## TYPICAL ODD FLOOR PLAN



Rera Carpet Area	646.00 sq.ft
Wash Carpet Area	46.00 sq.ft
Double Height Terrace Carpet Area	85.00 sq.ft
Total	777.00 sq.ft
Final Carpet Area (including external wall)	846.00 sq.ft

## TYPICAL EVEN FLOOR PLAN



Rera Carpet Area	646.00 sq.ft
Wash Carpet Area	46.00 sq.ft
Double Height Terrace Carpet Area	32.00 sq.ft
Total	724.00 sq.ft
Final Carpet Area (including external wall)	786.00 sq.ft



## VALUE ADDED SERVICES

- CSJ** : celebrating sangath journey - to make possession handing over process a life time memory
- CARES** : we 'e-listen' query, concern or complaint regarding your sangath IPL property
- RESALE & RENTAL SERVICES** : RESALE & RENTAL : we connect you with the right person with right price
- ECG CLUB** : ECG CLUB : an initiative to make each sangath IPL project energyefficient - clean - green
- MPP** : MPP : member privilege program - let's spread green, share green to build class apart community and earn exciting benefits & privileges

## "A" GRADE QUALITY MATERIALS ONLY



## CURRENT AND UPCOMING PROJECTS

	<b>mangifera</b>	Luxury orchard living @ shivpura kampa
	<b>GOOD TIMES</b>	countryside homes @ dahegam
	<b>CENTRAL</b>	shops and offices @ motera
	<b>GOOD LIFE</b>	plot & villas @ shivpura kampa
	<b>GIFT JUNCTION</b>	commercial space only for rent @ nr. gift city, gandhinagar
	<b>COMING SOON</b> SANGATH® IPL	3 bhk @ zundal, sp ring road
	<b>COMING SOON</b> SANGATH® IPL	3 & 4 bhk @ gift city, gandhinagar

## GUJARAT'S OUTSTANDING STRUCTURE AWARD 2020

