

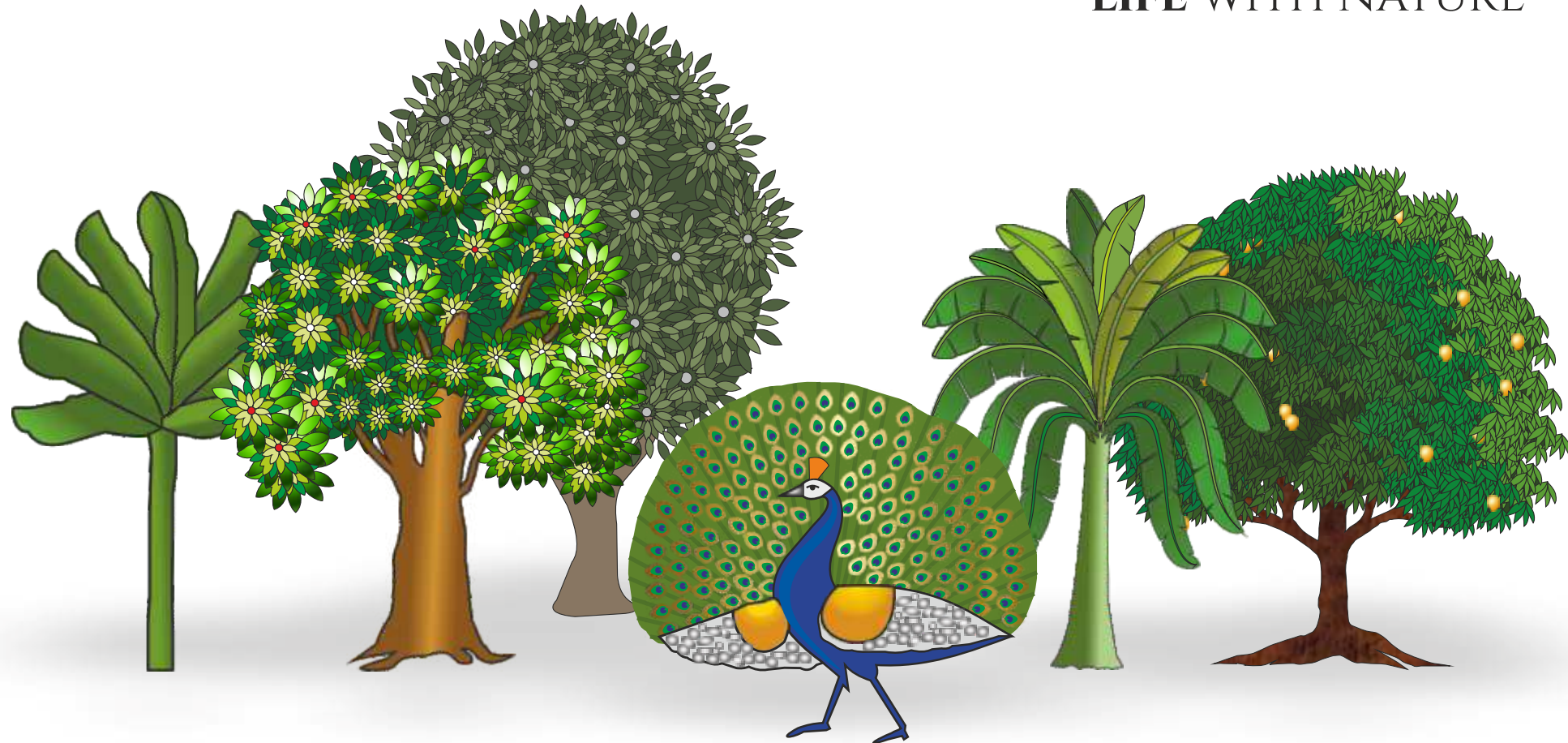




Setu Group imbibes the three core values of Excellence, Expertise and Elegance across all the development projects that they undertake. Every project is a striving for excellence across every construction parameter.

Setu Group's portfolio is a mix of residential and commercial projects. Leading corporate and popular retail brands have chosen Setu Group's properties as their chosen premise. Real estate is a significant investment and a vital component of each one's life journey; Setu understands this fact and has made it their mission to be a 'bridge' – a connecting link – between you and your dreams.

LIFE WITH NATURE



•ANANYA•

UNIQUE NATURE VILLAS

Presenting a unique villa project, a small piece of heaven on earth for you. An experience of lifestyle with peaceful lush green surrounding, meditative aquas & state-of-the-art amenities.

A unique project designed by Architect Tony Joseph.

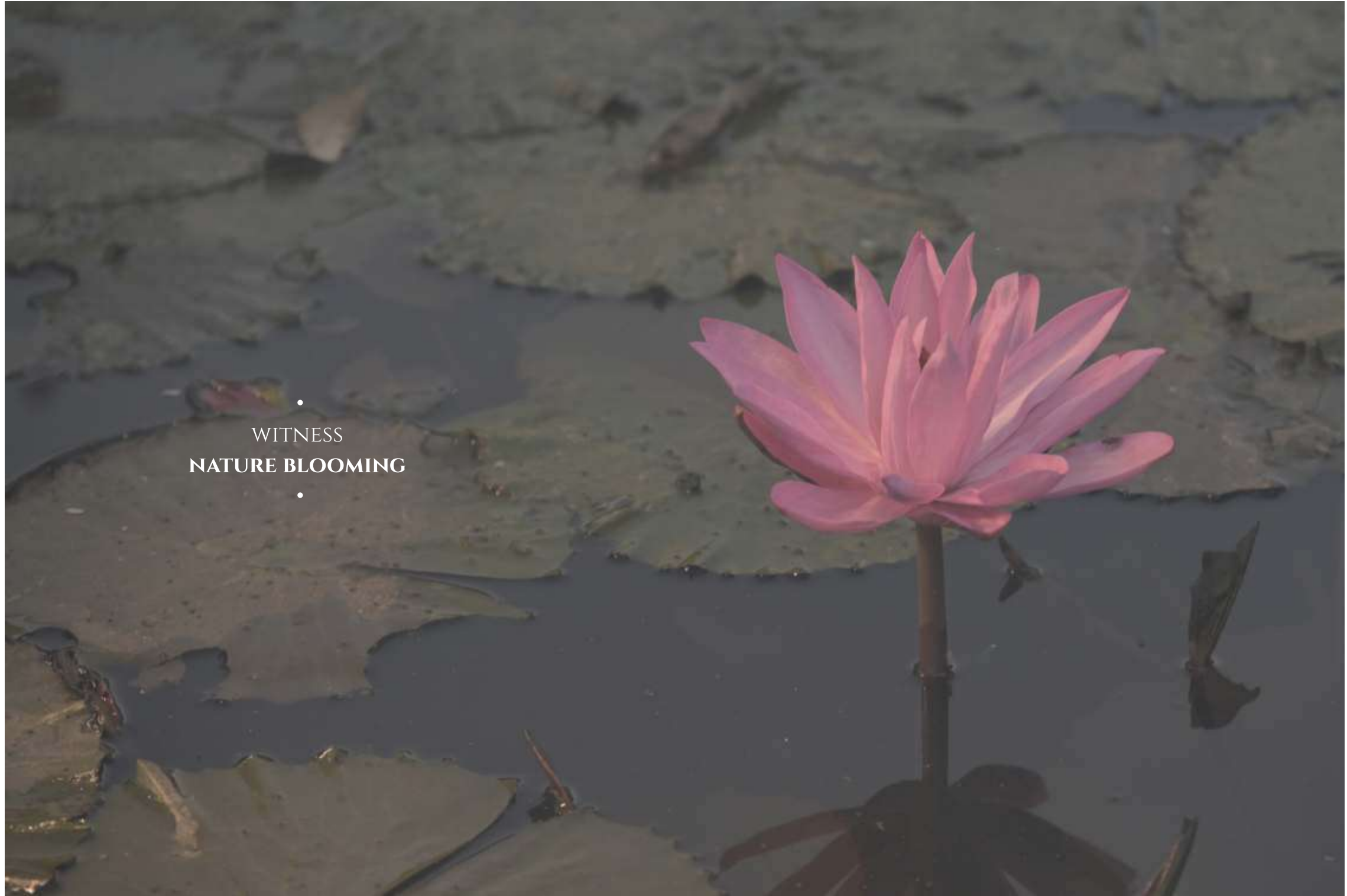
Project spreads across 90 acre of greens combined with smartly designed living spaces & club house full of modern facilities. A perfect rejuvenating life with nature..



Ar. Tony Joseph



Stapati is an architecture practice established by Tony Joseph in 1989. Stapati's architecture emerges from a sensitive understanding of the context; one where the evolution of design is firmly rooted in the region's traditional narratives, while interpreting the elements in a modern context. There is an underlying acuity in the design approach, which responds to the site uniquely, rendering it relevant and timeless. The practice has evolved continuously since its inception, constantly exploring new directions in architecture.



•
WITNESS
NATURE BLOOMING
•

- actual site image



•
EXPERIENCE
THE FIRST BLUSH
•

- actual site image



•
BE ONE WITH
NATURE
•



WITNESS
PLAY OF LIGHTS

•
TAKE A SIP
OF FRESHNESS
•





•
LEAP IN TO
SOOTHING SURROUNDINGS
•



•
FEEL THE
LUSH GREENS
•



•
TOUCH OF
PEACEFUL AQUAS
•



•
WAKE UP TO
CALM NATURE
•

- actual site image



•
BEAUTY OF
RAW NATURE
•

- actual site image



•
EXPERIENCE
REJUVENATION
•

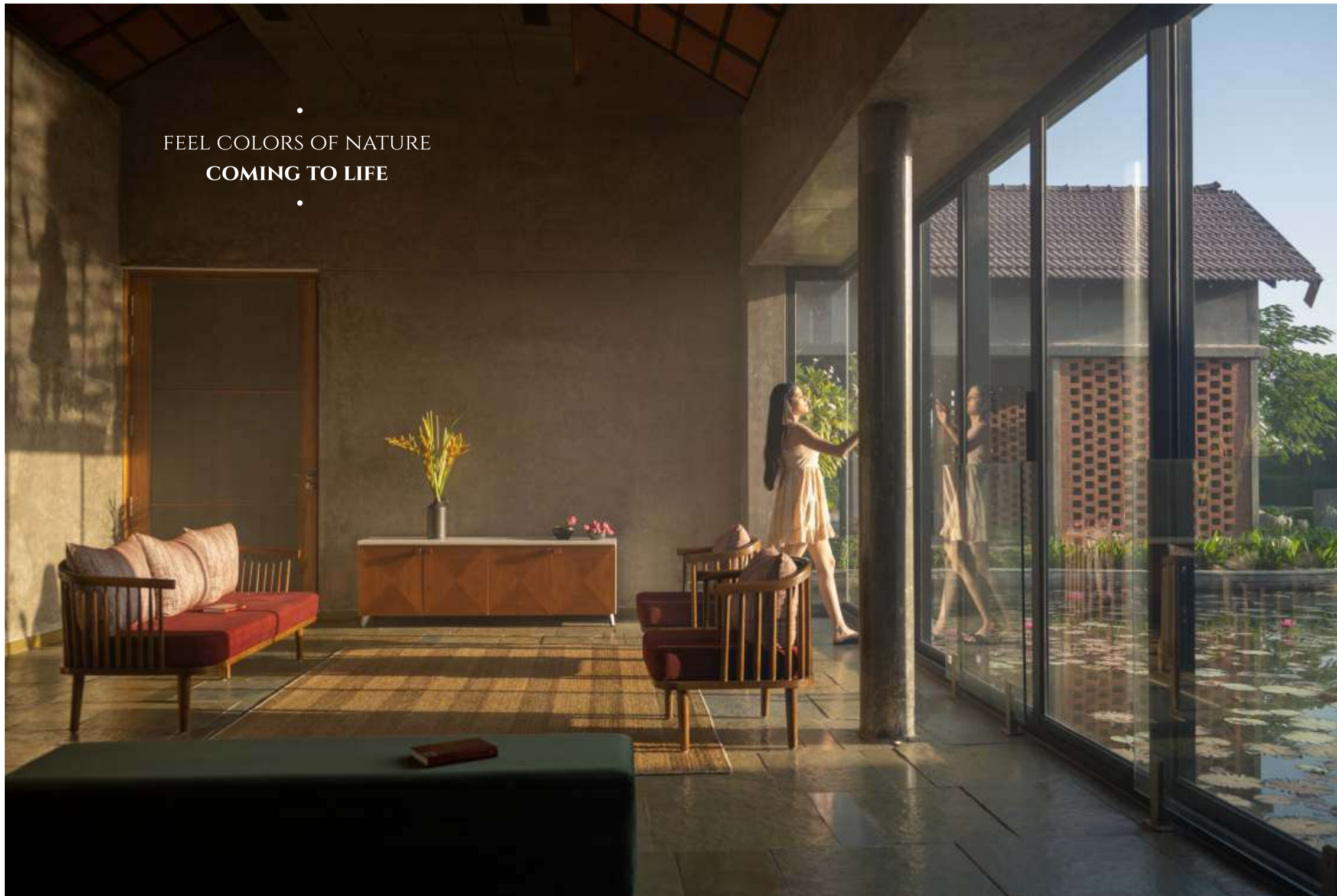
- actual site image

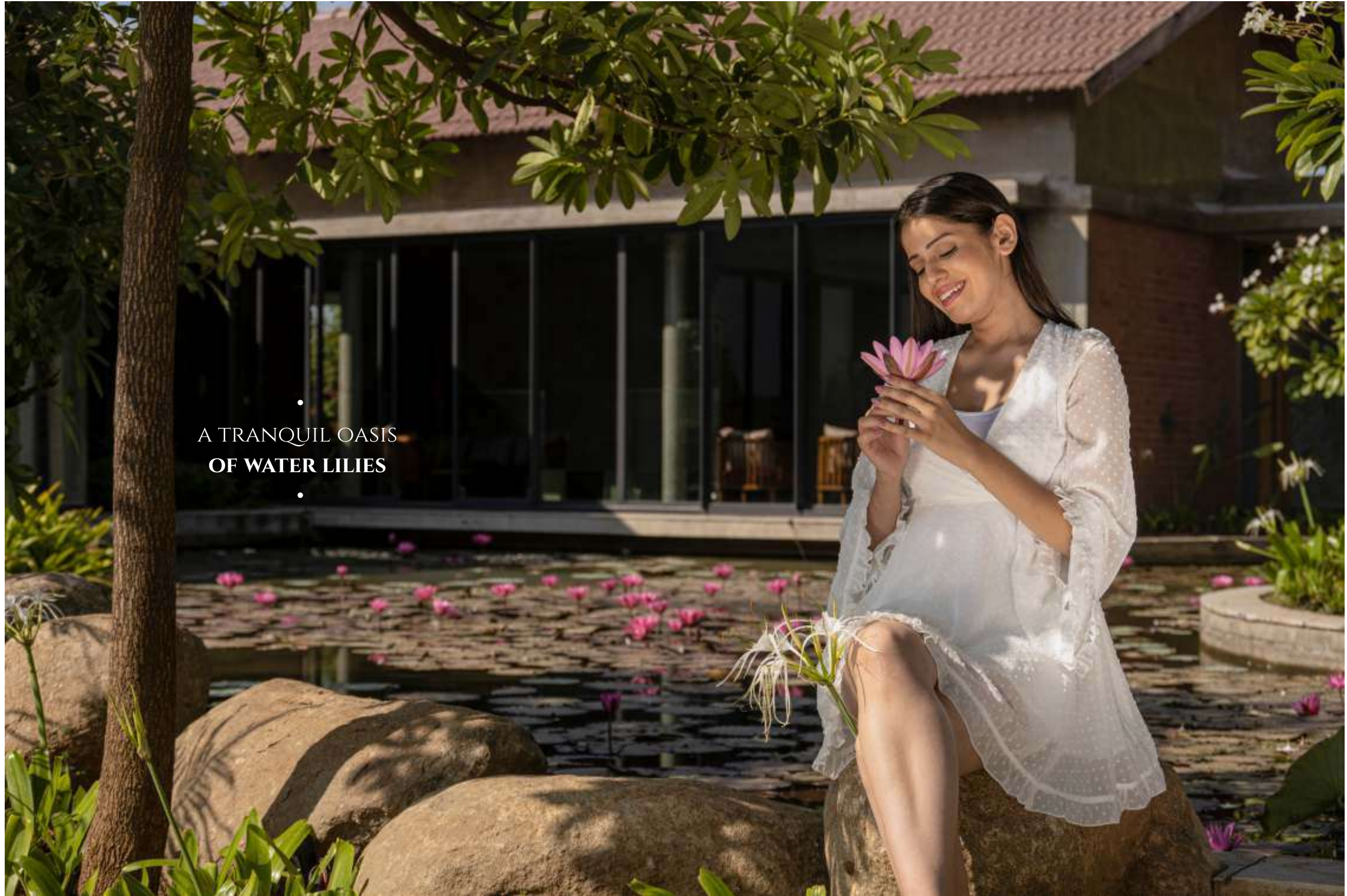


- actual site image

•
JOYFUL START
ALWAYS
•

•
FEEL COLORS OF NATURE
COMING TO LIFE
•





•
A TRANQUIL OASIS
OF WATER LILIES
•

- actual site image



•
REDISCOVER JOY OF
SMALL WALKS
•

- actual site image



•
PEACEFUL EVENINGS WITH
A FOUNTAIN, POND & GREENS
•

- actual site image



•
FOR THOSE HAPPY
MOMENTS OF LIFE
•

- actual site image

•
CREATING
FOREVER MEMORIES
•



- actual site image

•
EXPERIENCE
UNIQUE NATURE VILLAS
•



- actual site image



•
EXPERIENCE
LIVING WITH NATURE
•

- actual site image



•
YOUR PIECE OF
HEAVEN
•

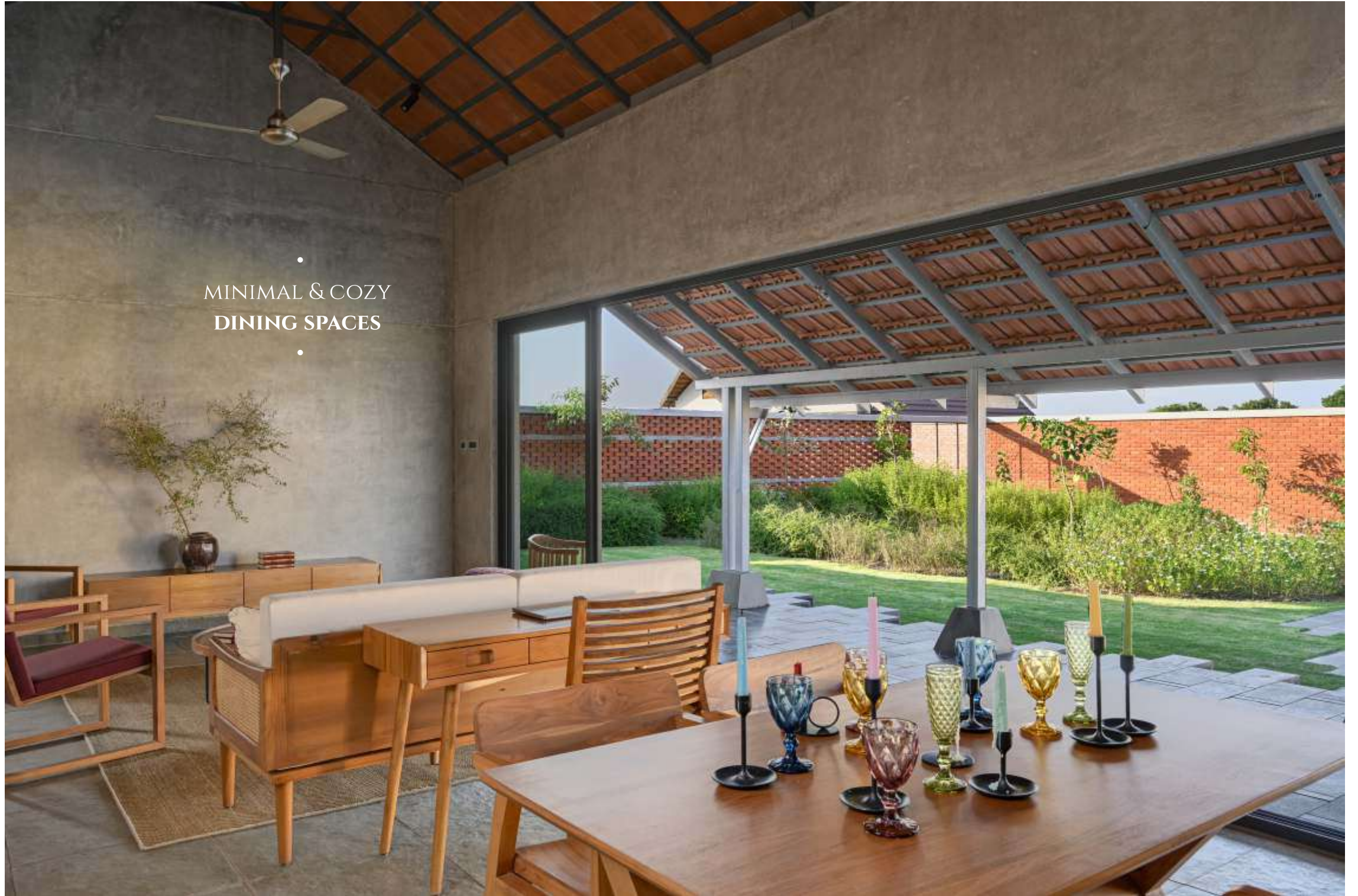
- actual site image



•
BRIGHT & LIVELY
LIVING SPACES
•

- actual site image

•
MINIMAL & COZY
DINING SPACES
•



- actual site image



•
RELAXING & FRESH
LIVING SPACES
•



•
BEAUTIFUL AESTHETIC
LIVING SPACES
•

- actual site image

•
PEACEFUL & PRIVATE
BEDROOMS
•



- actual site image

CLUB HOUSE

Spread around **2,00,000 sq.ft. area** with amazing modern amenities and facilities



SWIMMING POOL



GYMNASIUM



RESTAURANT



THEATER



GARDEN CAFÉ



LIBRARY



SPA/ MASSAGE ROOM



TENNIS COURT



BOARD GAME ROOM



MINI BASKETBALL COURT



INDOOR GAMES



TABLE TENNIS



VOLLEYBALL COURT



BILLIARDS / POOL



SQUASH COURT



TURF



BADMINTON COURT



SUNKEN PARK



CYCLING TRACK



SIT-OUT AREA



JOGGING TRACK



KIDS SWIMMING POOL



MULTIPLE PLAY AREAS



AREA FOR TRADITIONAL GAME



SITE LAYOUT



TYPE A

1 to 129



TYPE B

130 to 227



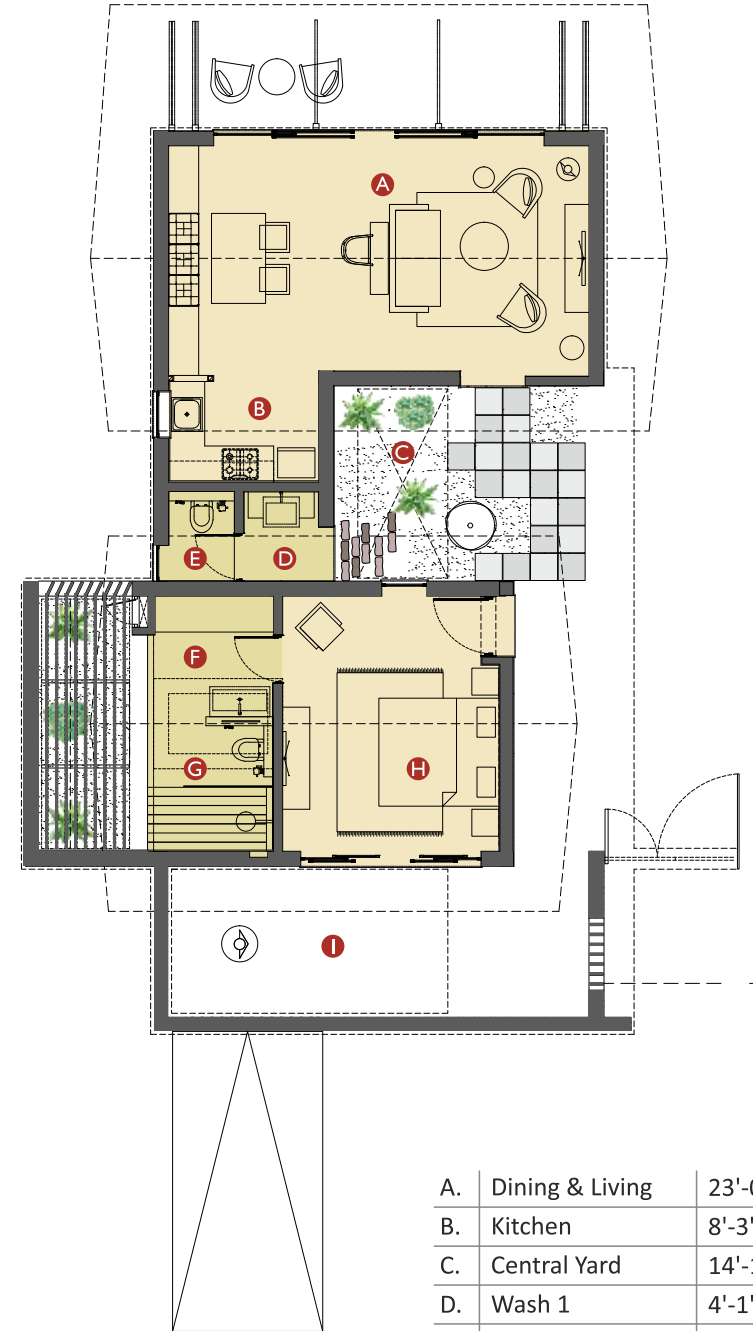
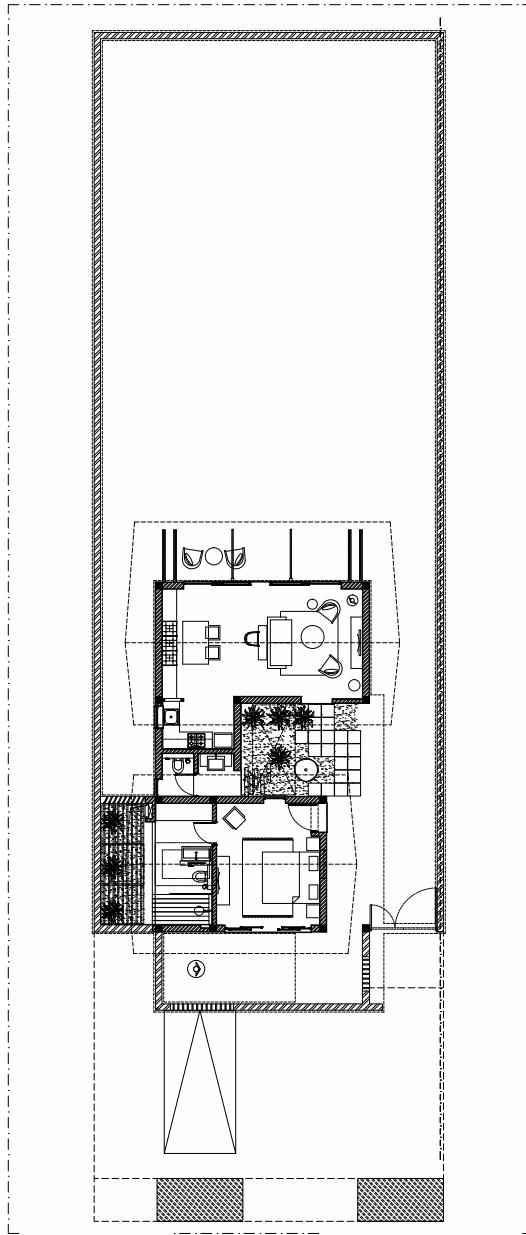
TYPE C

228 to 298

+

CLUB HOUSE
2,00,000 Sq.Ft. area

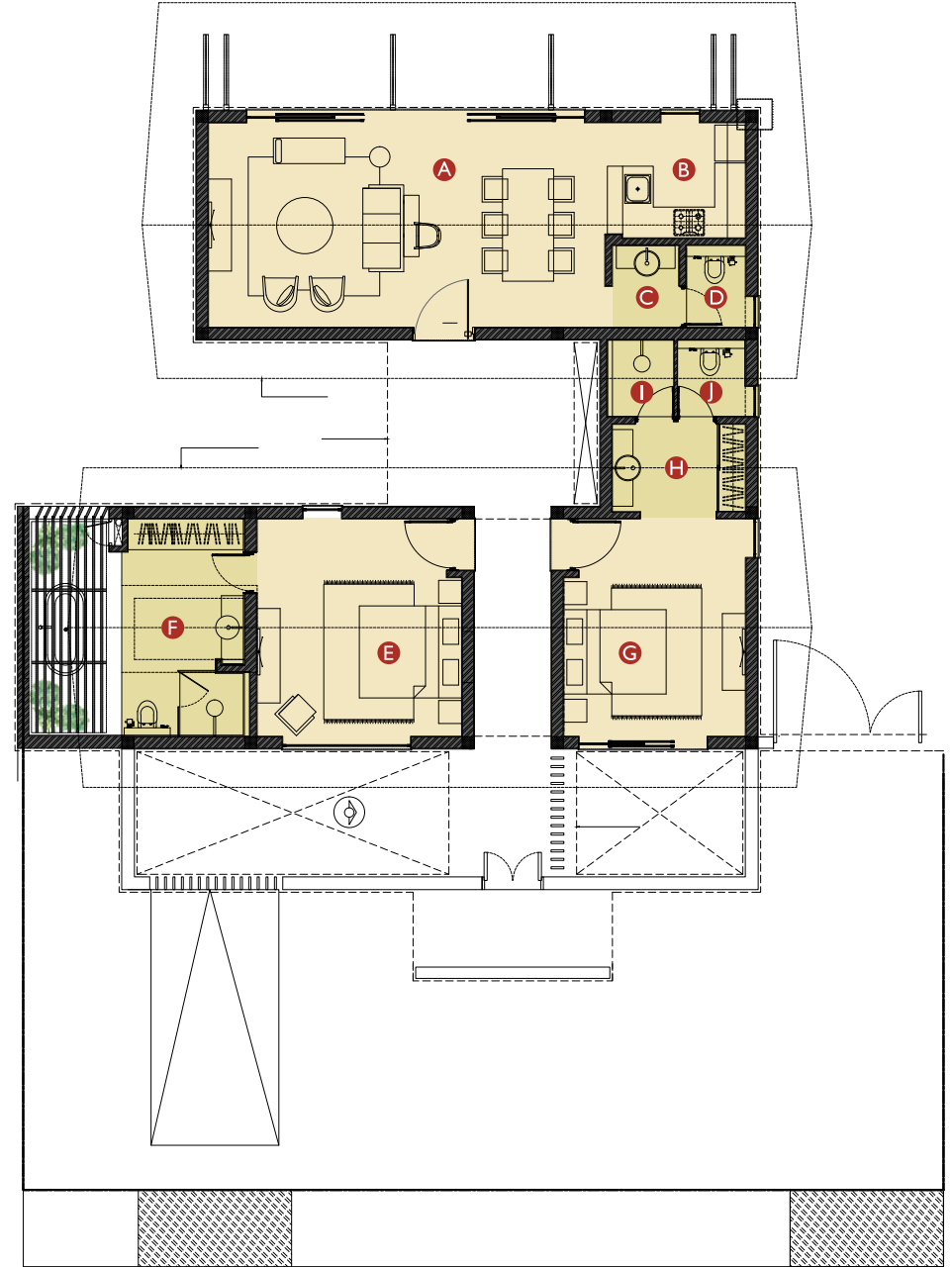
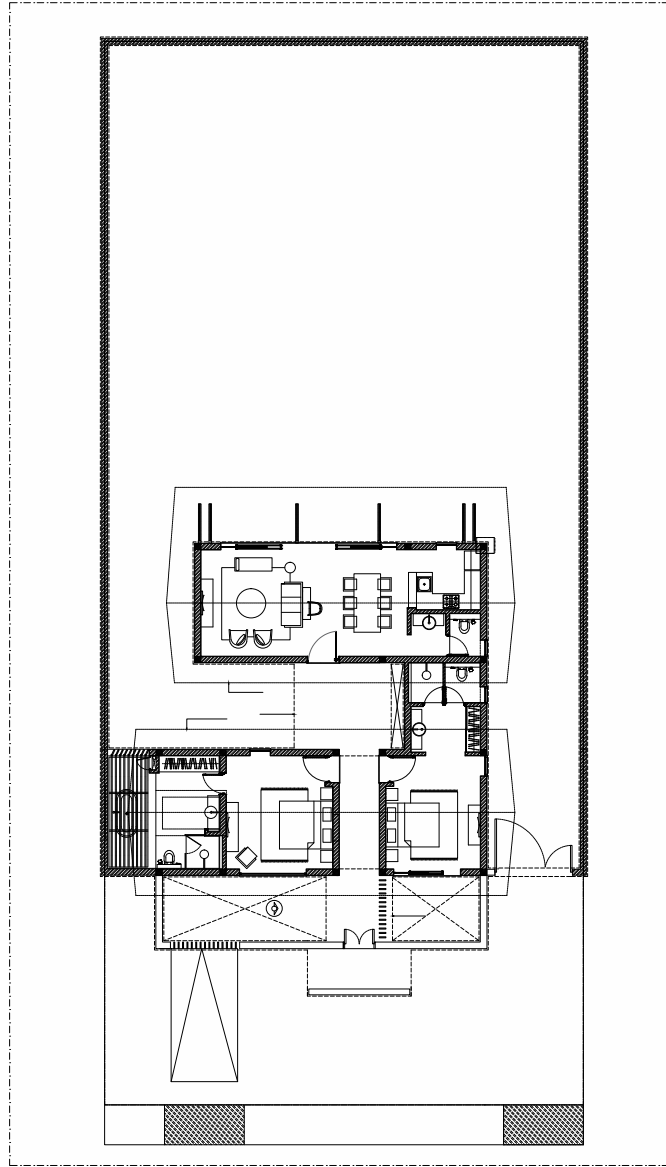
- 01 Entrance
- 02 Experience Centre
- 03 Green Spine / Adventure zone
- 04 Type A Villas
- 05 Type B Villas
- 06 Type C Villas
- 07 Club House
- 08 Future Development
- 09 Future Development
- 10 Future Development
- 11 Touch farm & Aviary
- 12 Water Harvesting
- 13 Organic Farm



A.	Dining & Living	23'-0" x 12'-4"
B.	Kitchen	8'-3" x 6'-1"
C.	Central Yard	14'-10" x 10'-8"
D.	Wash 1	4'-1" x 4'-11"
E.	WC	3'-7" x 4'-11"
F.	Wash 2	6'-11" x 7'-1"
G.	Toilet	6'-11" x 6'-8"
H.	Bedroom	11'-10" x 14'-0"
I.	Frontyard	23'-0" x 8'-3"

VILLA A 1 BHK

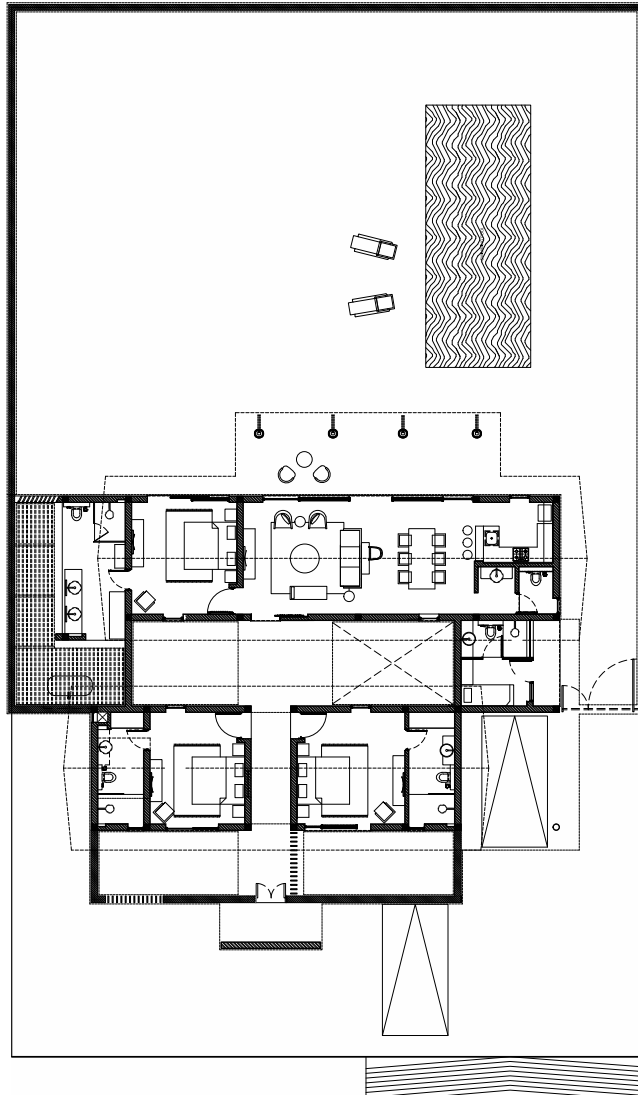
Plot size: 12M X 40M | Built-up area: 1,323 SQ.FT.
Car parking: One



VILLA B 2 BHK

Plot size: 18M X 40M | Built-up area: 1,827 SQ.FT.
 Car parking: One | Splash pool: Optional

A.	Dining & Living	25'-5" x 13'-1"	F.	Toilet	7'-11" x 14'-0"
B.	Kitchen	9'-0" x 7'-4"	G.	Bedroom 2	11'-8" x 14'-0"
C.	Wash 1	4'-3" x 5'-3"	H.	Wash 2	8'-6" x 5'-7"
D.	WC 1	3'-9" x 5'-3"	I.	Shower	4'-3" x 4'-11"
E.	Bedroom 1	13'-1" x 14'-0"	J.	WC 2	4'-5" x 4'-11"

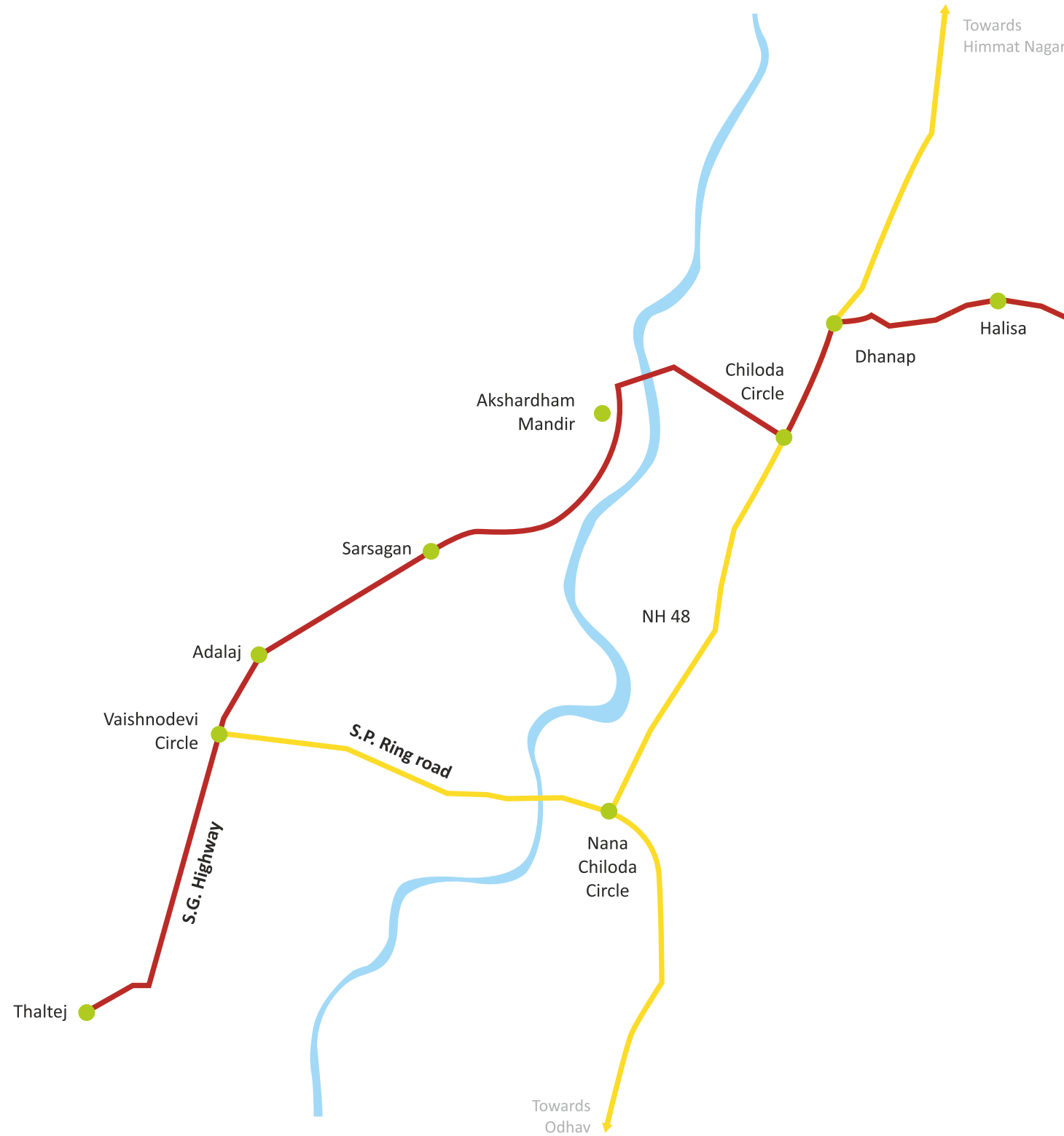


VILLA C 3 BHK

Plot size: 24M X 40M | Built-up area: 3,159 SQ.FT.
 Car parking: Two | Splash pool: Optional

A.	Dining & Living	14'-0" x 28'-11"	G.	Bedroom 2	14'-0" x 11'-10"
B.	Kitchen	7'-7" x 9'-10"	H.	Toilet 2	14'-0" x 5'-9"
C.	Wash	5'-11" x 4'-8"	I.	Bedroom 3	14'-0" x 11'-10"
D.	Toilet 1	5'-11" x 4'-3"	J.	Toilet 3	14'-0" x 5'-9"
E.	Bedroom 1	14'-0" x 13'-1"	K.	Servant's Room	5'-10" x 8'-2"
F.	Toilet 1	16'-5" x 7'-11"	L.	Sit-out	10'-8" x 3'-3"
			M.	Servant's Toilet	4'-8" x 8'-2"

Tap For Location



ANANYA

Ahmedabad-Himmatnagar Highway, Vadvasa,
Dehgam Taluka, Gujarat 382305

Link Ananya Project LLP

603- 606 Eventi, Opp. Bawarchee Restaurant, Uma Shankar Joshi Road,
Off CG Road, Sardar Patel Nagar, Navarangpura, Ahmedabad 380009

+91 99788 19900 | info@ananyavillas.in | ananyavillas.in

Architect & Planning :



Engineer :



Disclaimer

The present content in the brochure, including but not limited to pictures, renderings of projects, images, copy, and other items, are purely indicative in nature, and are an artistic conception and are NOT actual depiction of buildings or landscapes or facilities. You are required to verify all the details with the company sales team only. Artist's impressions, products, features, furniture, floor coverings, curtains, mirrors, wall hangings, light fittings, furnishings etc. are shown as illustrations and for reference only. All the efforts have been made to ensure accuracy and the Company holds the right to change/modify features and specifications.



VISIT US FOR TRUE EXPERIENCE OF UNIQUE NATURE VILLAS

+91 99788 19900 | info@ananyavillas.in | ananyavillas.in