

SHILP[®]
NORTH SKY

@ GIFT CITY, GANDHINAGAR

SHILP
NORTH SKY

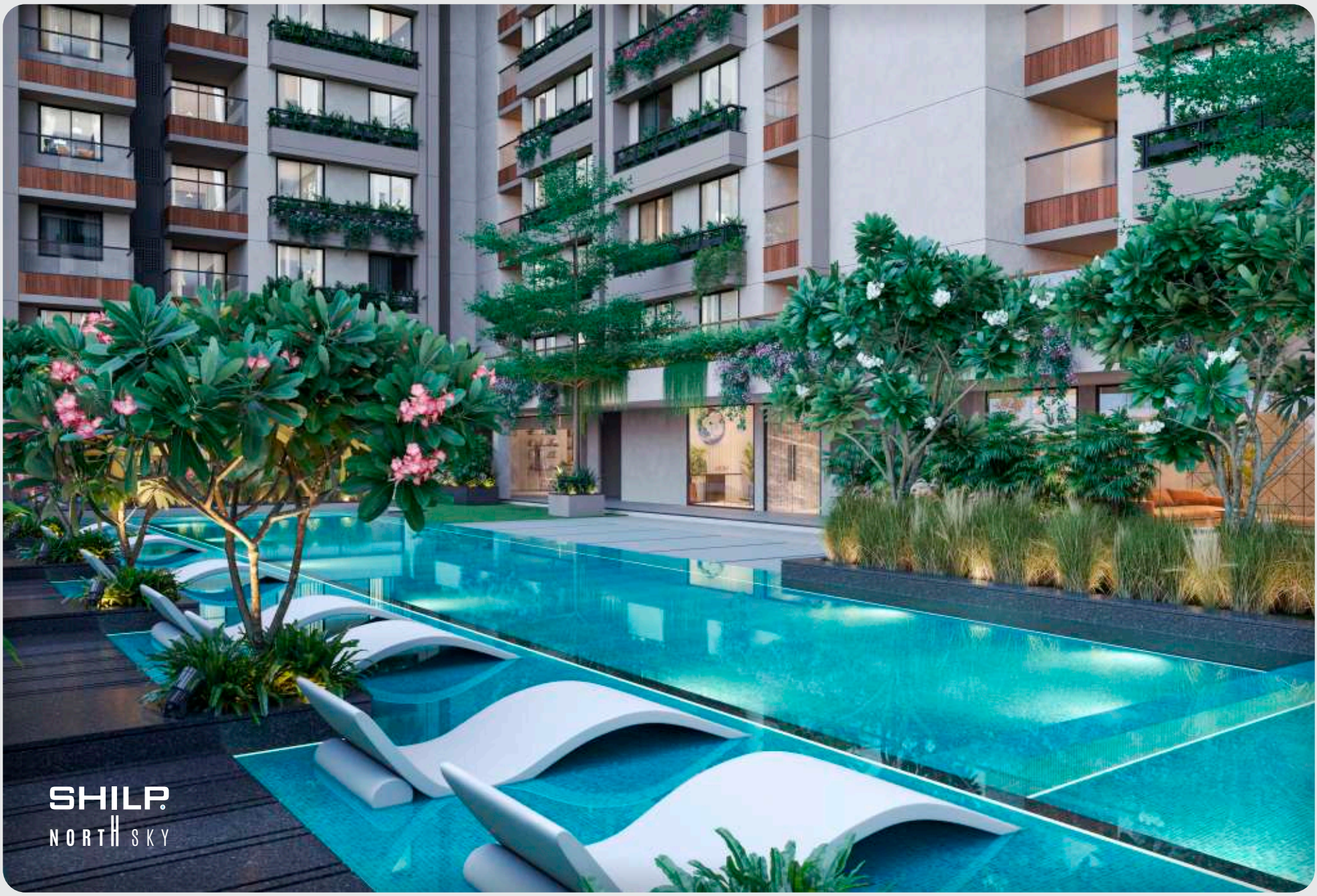


SHILP
NORTH SKY



SHILP
NORTH SKY





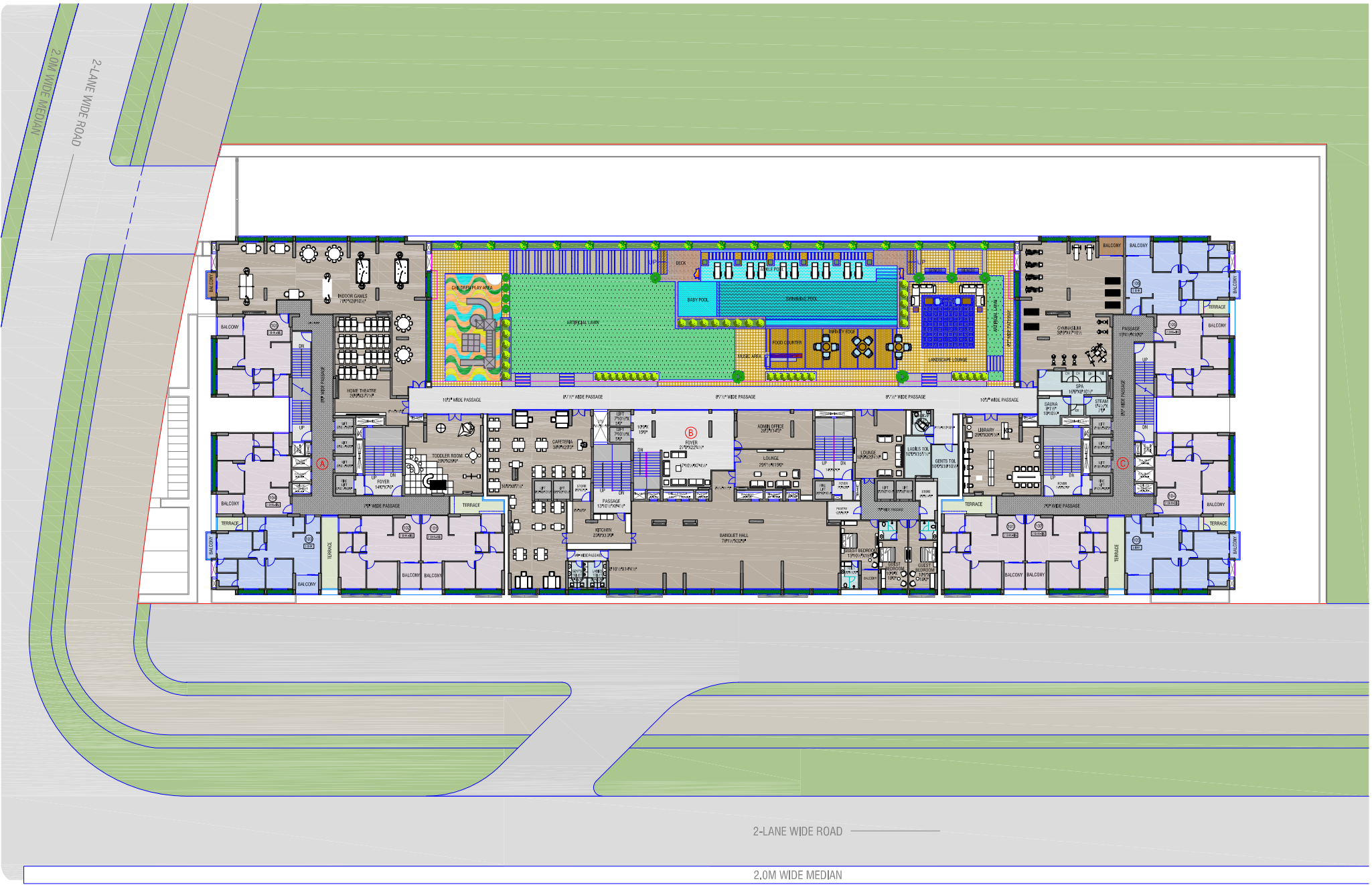
SHILP.
NORTH SKY

SHILP
NORTH SKY



SHILP
NORTH SKY





AMENITIES AND
1ST FLOOR PLAN





2ND TO 23RD
FLOOR PLAN





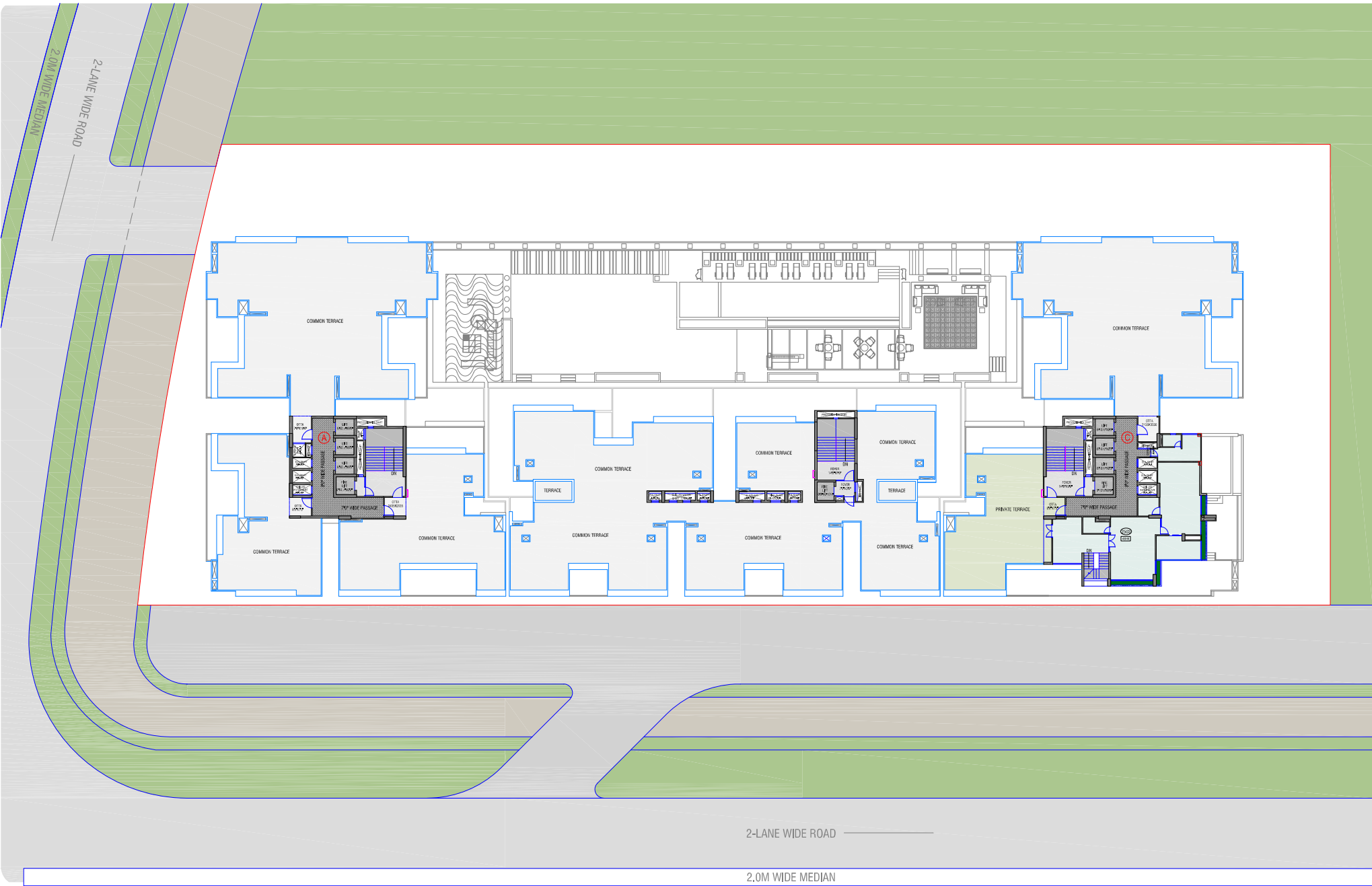
24TH FLOOR
PLAN





25TH FLOOR PLAN
(Penthouse Plan)



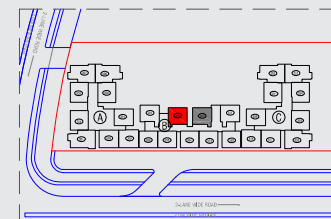


TERRACE PLAN



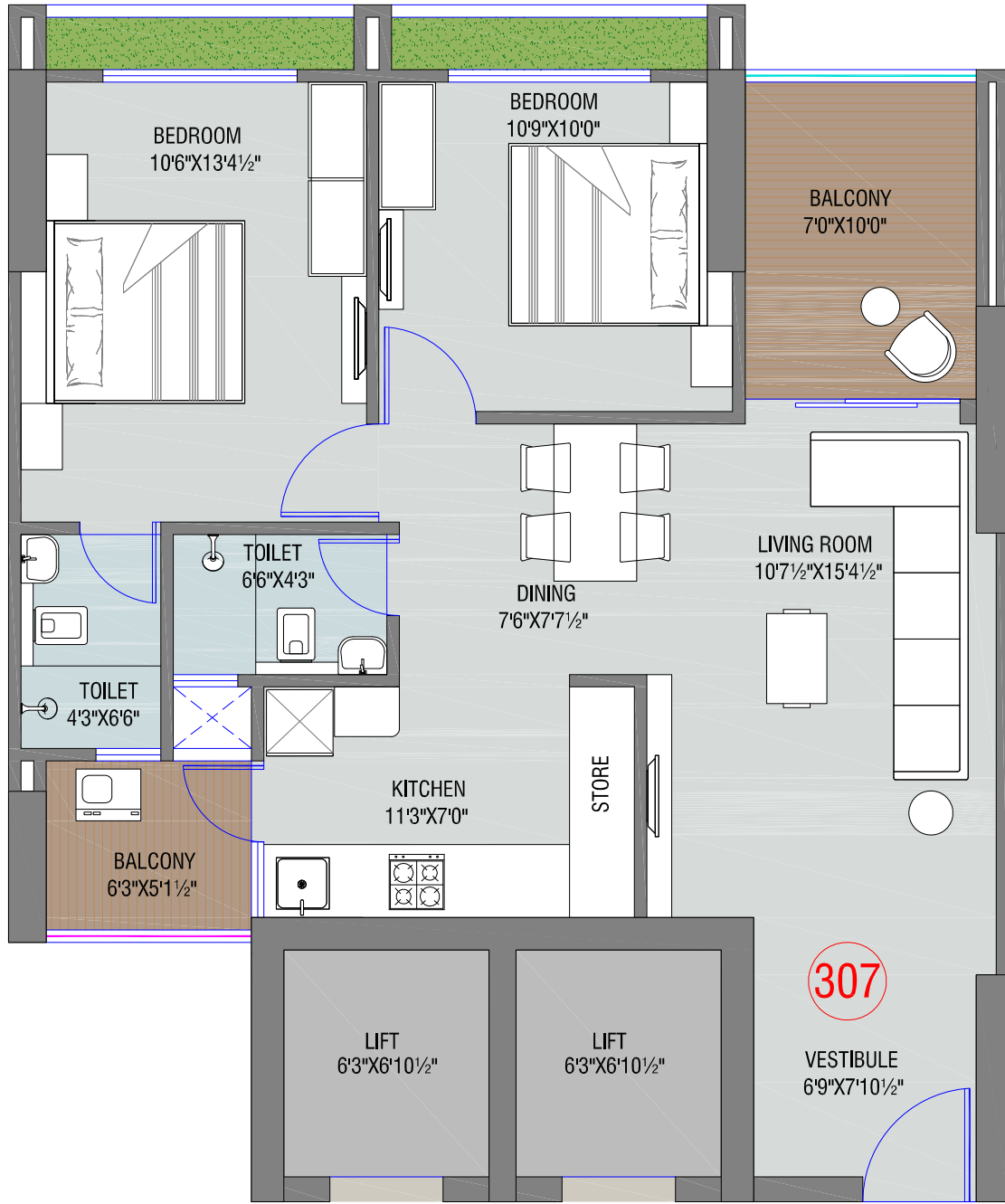
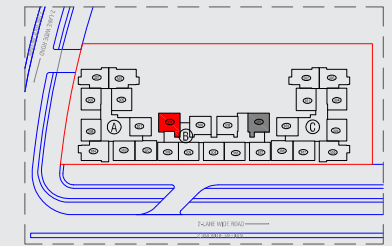
2 BHK UNIT PLAN (SMALL)

BLOCK : B
(TYPE-01)



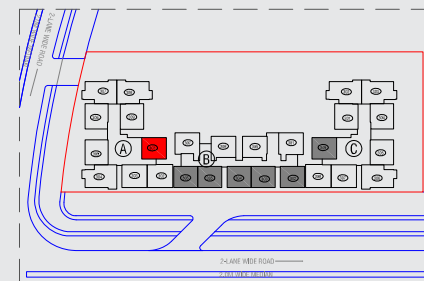
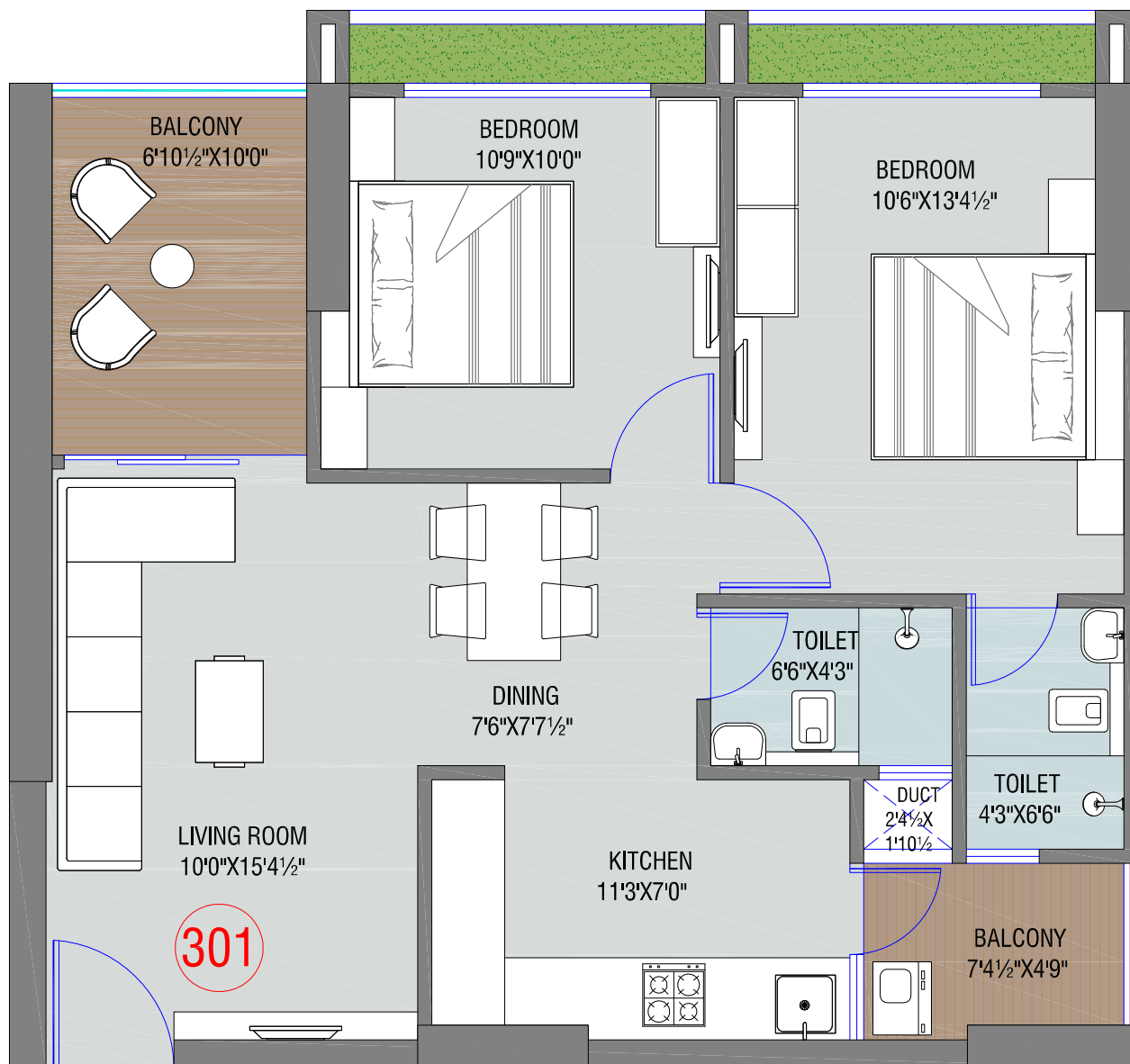
2 BHK UNIT PLAN (SMALL)

BLOCK : B
(TYPE-02)



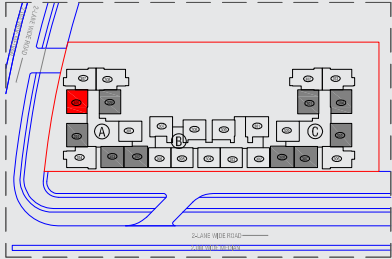
2 BHK UNIT PLAN (SMALL)

BLOCK : A
(TYPE-03)



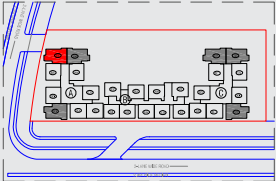
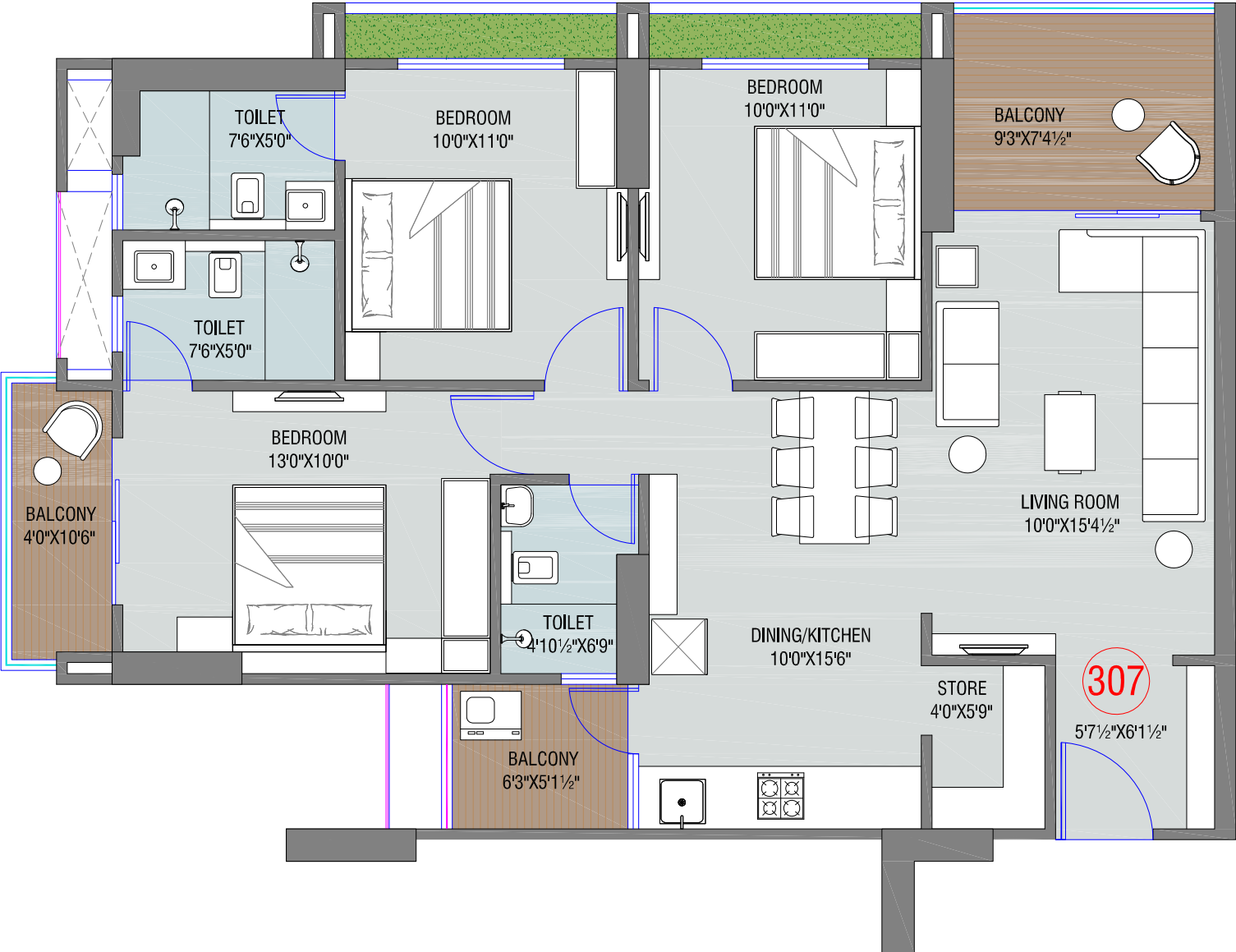
2 BHK
UNIT PLAN
(BIG)

BLOCK : A
(TYPE-04)



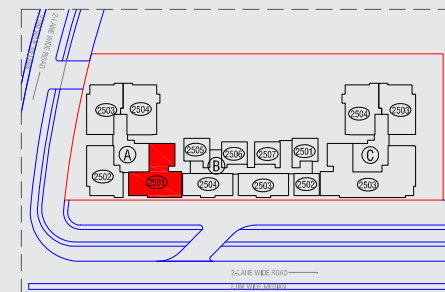
3 BHK UNIT PLAN

BLOCK : A



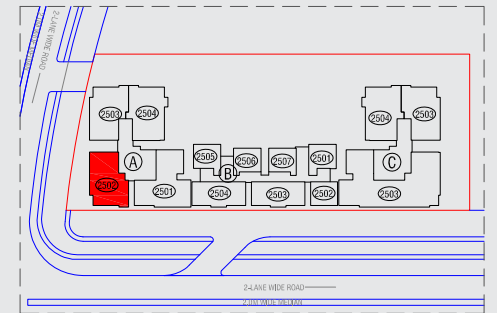
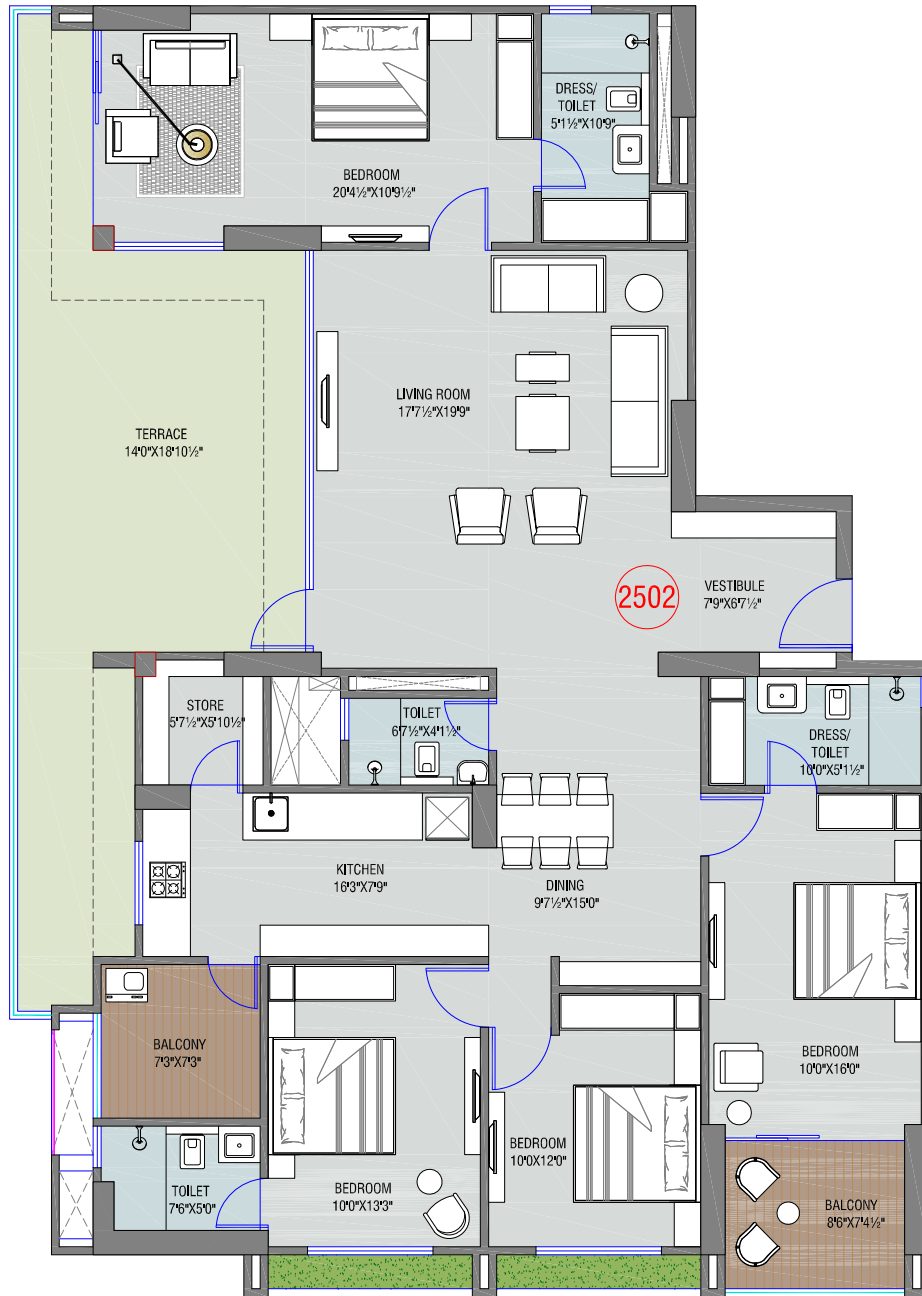
4 BHK UNIT PLAN

BLOCK : A
25TH FLOOR PLAN



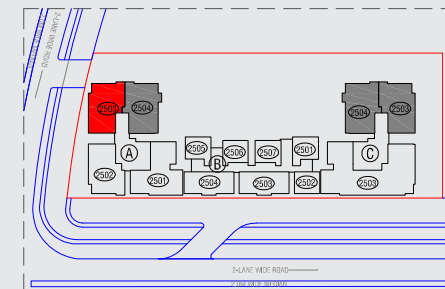
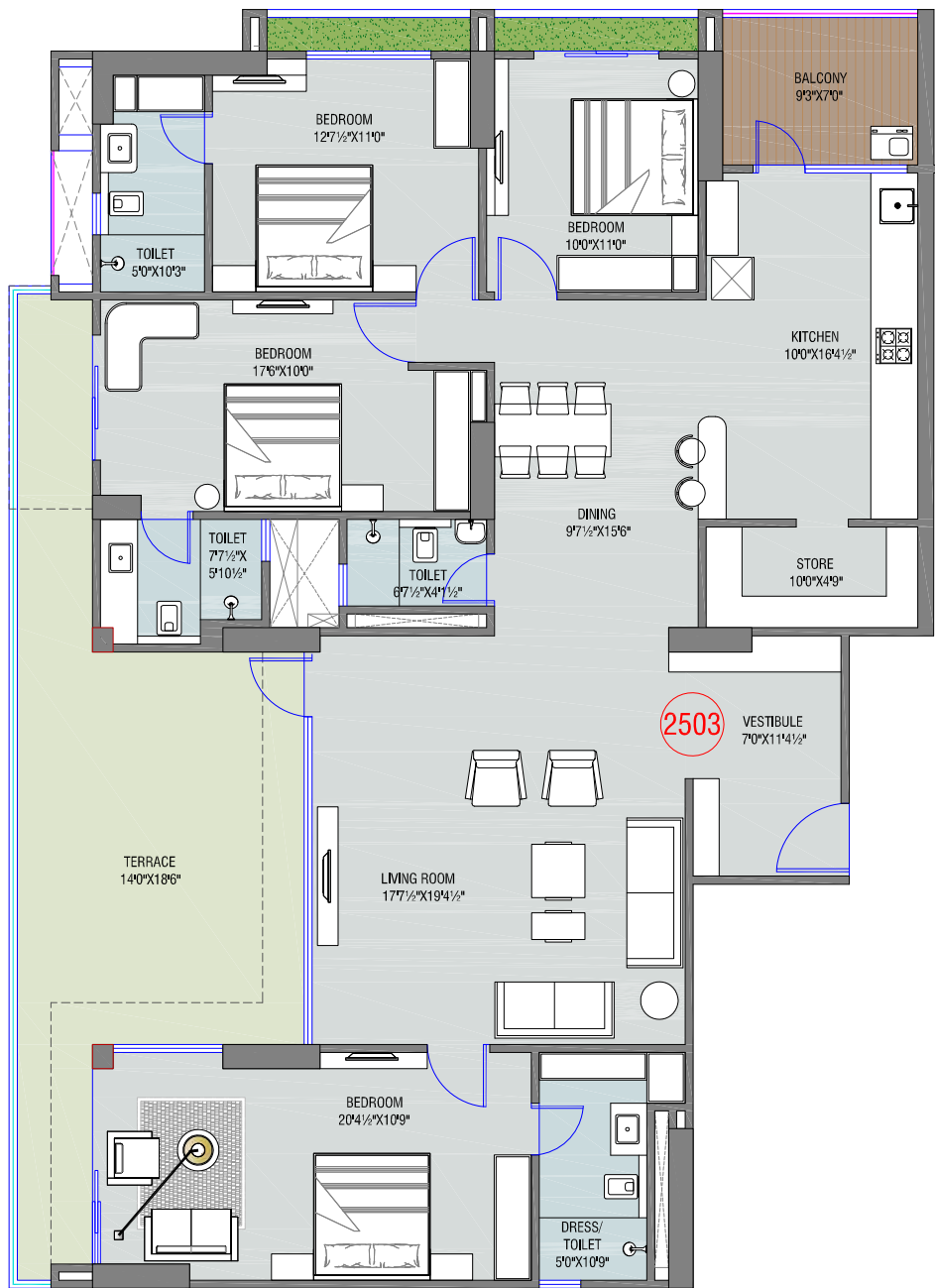
4 BHK UNIT PLAN

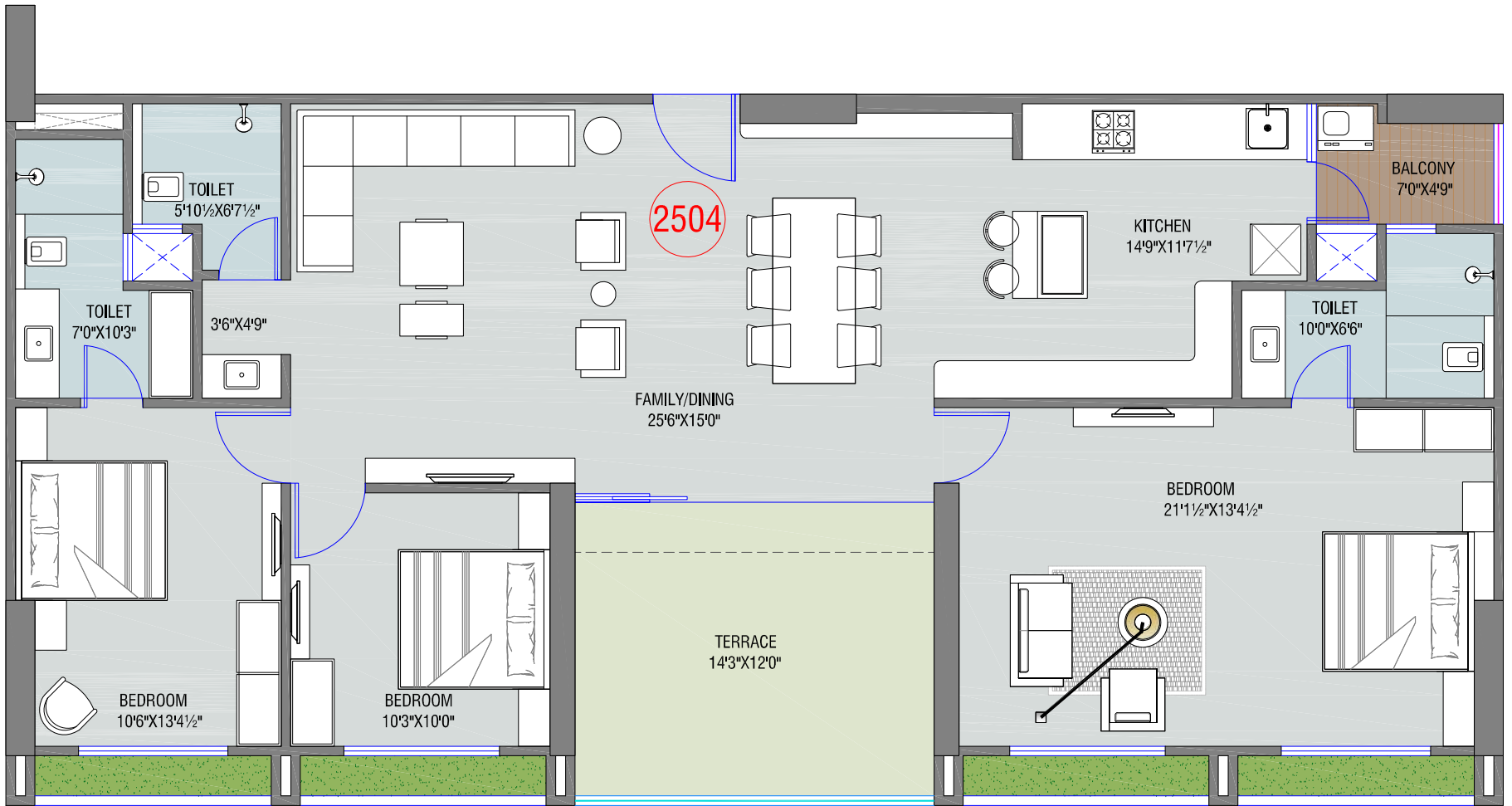
BLOCK : A
25TH FLOOR PLAN



4 BHK UNIT PLAN

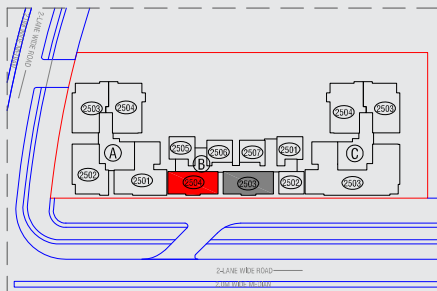
BLOCK : A
25TH FLOOR PLAN





3 BHK
UNIT PLAN

BLOCK : B
25TH FLOOR PLAN



ADVANCE THROUGH THE ACCESSIBILITY OF GIFT

EXTERNAL TRANSPORTATION

- Grid of six Arterial Roads (Connecting to various area of Ahmedabad and Gandhinagar)
- Metro Rail Transport System (MRTS) to GIFT
- Bus Rapid Transit System (BRTS) to GIFT



BULLET TRAIN
MUMBAI – GIFT CITY : 3 HOURS
Connectivity Via Metro Station



METRO CONNECTIVITY WITHIN GIFT CITY

Udayan Station Metro Stop
Exhibition Station
Vitth Station

IN CLOSE PROXIMITY TO GIFT CITY

PDP Station 5.8 km
GNLU Station 6.5 km



ROAD TRAVEL TIME TO KEY HUBS

Lies in the Influence Zone of DMIC
(Delhi – Mumbai Industrial Corridor)

Close Proximity to World Class Schools & College – NID, NIFT, PDP, IIT, PDEU and Other – Hospital _ Apollo

Upcoming 300 BED Hospital in GIFT City
(Lilavati Hospital)

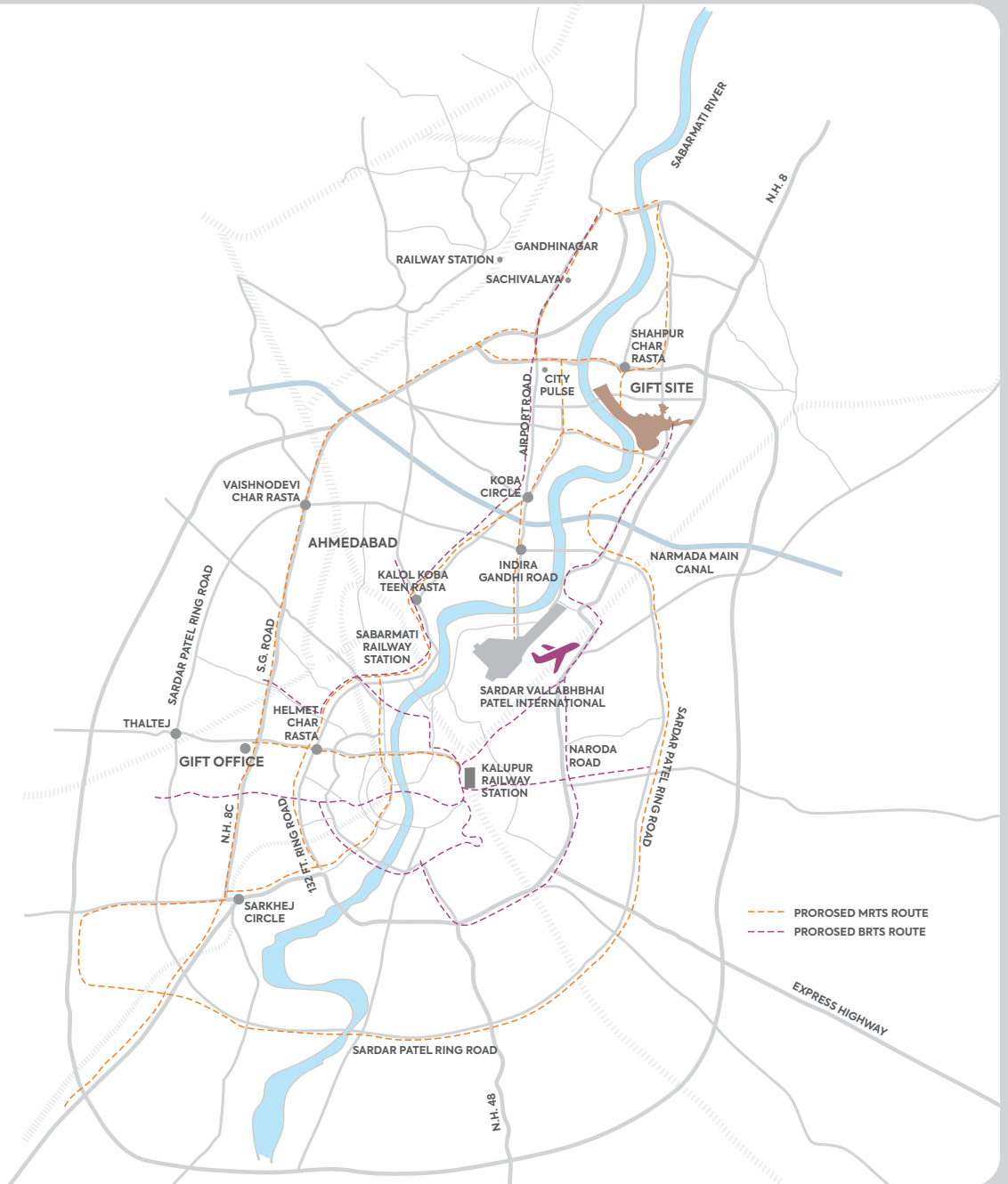
Connected with 4/6 Lane State and National Highway's

S.G. Highway – 10 mins.

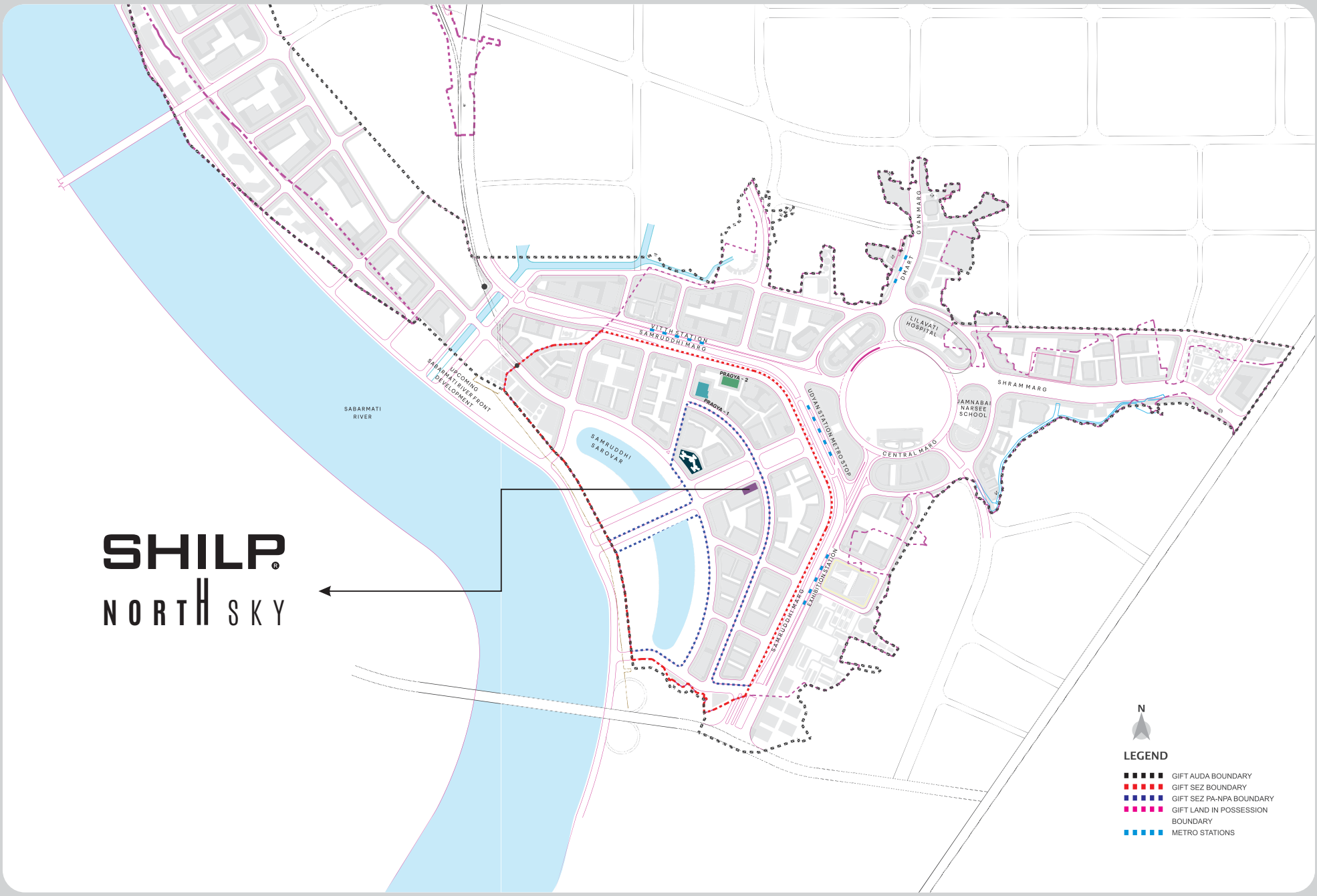
International Airport – 15 mins.

SP Ring Road – 10 mins.

All distances are approximate & are meant for broad reference only.



SHILP NORTH SKY




LEGEND

- GIFT AUDA BOUNDARY
- GIFT SEZ BOUNDARY
- GIFT SEZ PA-NPA BOUNDARY
- GIFT LAND IN POSSESSION BOUNDARY
- METRO STATIONS


SHILP[®]

BUILDING EXCELLENCE

 SHILP House
Besides Rajpath Club, Rajpath Rangoli Road
Bodakdev, Ahmedabad – 380054. Gujarat, India.

 www.shilpgroup.com

 saumil@shilp.co.in

 +91 97379 31234
+91 73831 57061

www.gujrera.gujarat.gov.in

RERA Registration No.: PR/GJ/GANDHINAGAR/GANDHINAGAR/Others/MAA11559/060423

DEVELOPERS NOTE

- All rights reserved by the developers for alteration / modification / improvement in specification and changes in dimensions and planning shall be binding to all.
- All architectural and interior views in the brochure are computer graphics simulated interpretation of the actual project.
- The brochure is just for an easy presentation of the project and should not be treated as a legal document.
- Electrical charges, Legal charges, AUDA any other facility charges shall be borne by purchasers.
- Stamp duty, registration fees, all taxes and cess shall be borne by purchasers.
- Payment should be in favour of Shilp Infra projects LLP.
- In the interest of continual developments in the design and quality of construction, the developer reserves all rights to make any changes in the scheme including and not limited to technical specifications, design, planning, layout and all purchasers shall abide by such changes.
- Changes / alterations of any nature including elevation, exterior colour scheme, balcony grill or any other changes affecting the overall design concept and outlook of the scheme are strictly NOT PERMITTED during or after the completion of the scheme.
- Any RCC member (Beam, Column, Slab) must not be damaged during the interior work of purchasers.
- Subject to Ahmedabad Jurisdiction only.