



# SKYLIFE

2 & 3 BHK Lifestyle living



UP ABOVE IN THE  
GLORIOUS SKY

RAISE YOUR LIFESTYLE  
BEYOND YOUR DREAMS

AN EPITOME OF ICONIC LIFESTYLE





Entrance Gate



Security Cabin



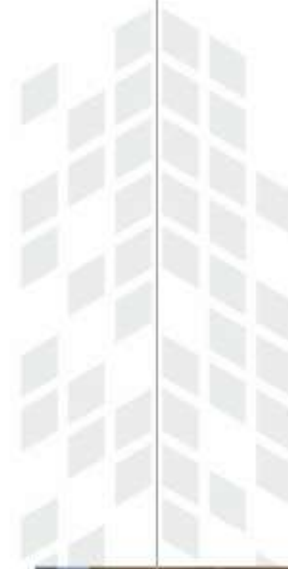
Designer Foyer



PickUp/  
Dropoff Zone



Elevated Clubhouse



Indoor Games



GYM



Toddler Play Area



Multipurpose Hall



Children Play Area





Gazebo Seating



Senior Citizen Seating



Party Lawn



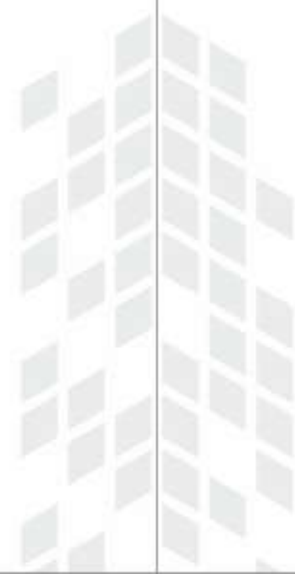
Outdoor Swing



Open Air Theatre



Deck Seating



Sensor Lights in Basement



Adani Gas Line



Electric Charging Point



Fire Safety



Solar For Common Light



  
SKYLIFE

  
SKYLIFE

CHANEL 10 CHANEL 10 COSMETIC SHOP COSMETIC SHOP



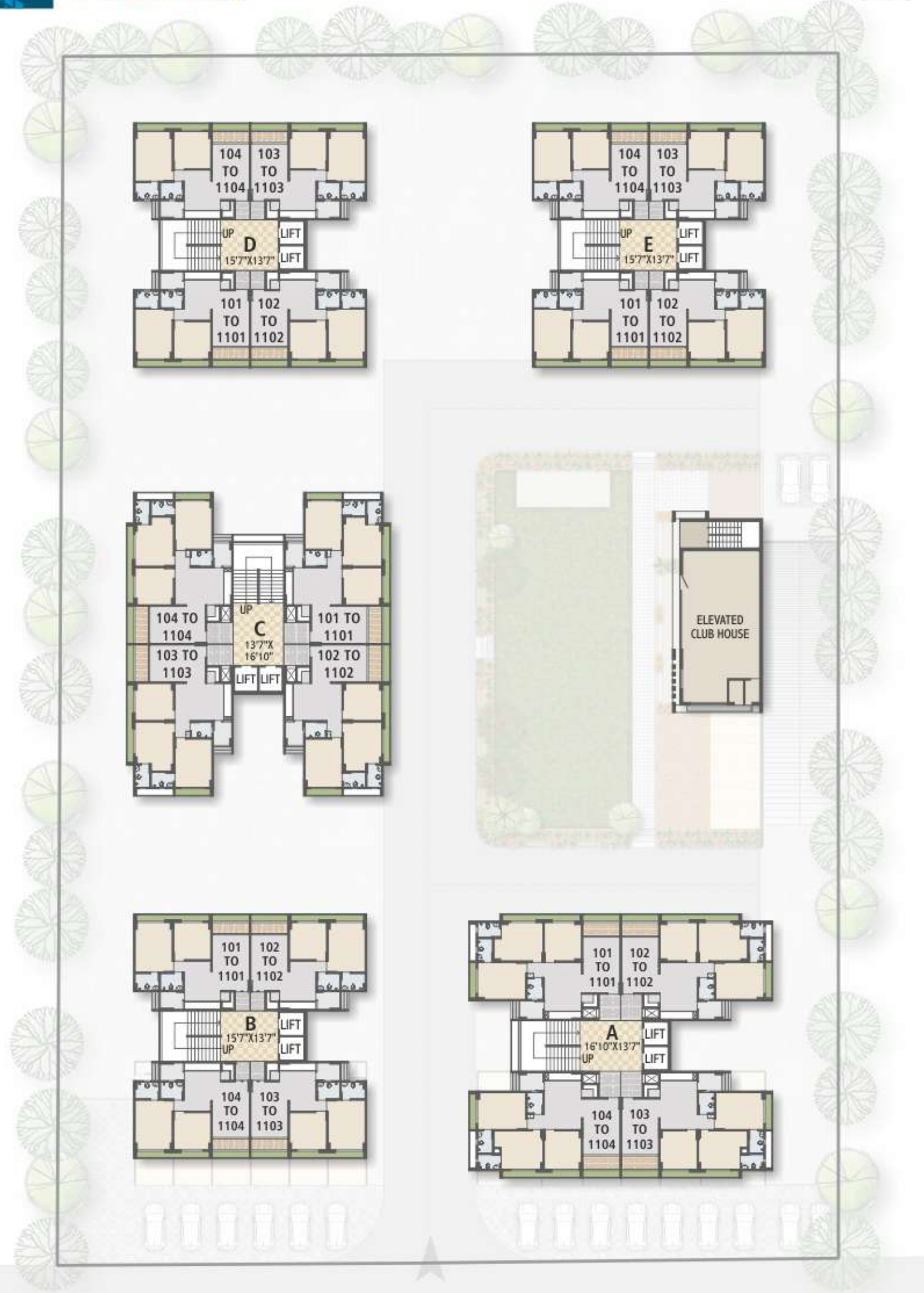
# GROUND FLOOR PLAN



18.00 MT WIDE TP ROAD



# TYPICAL FLOOR PLAN

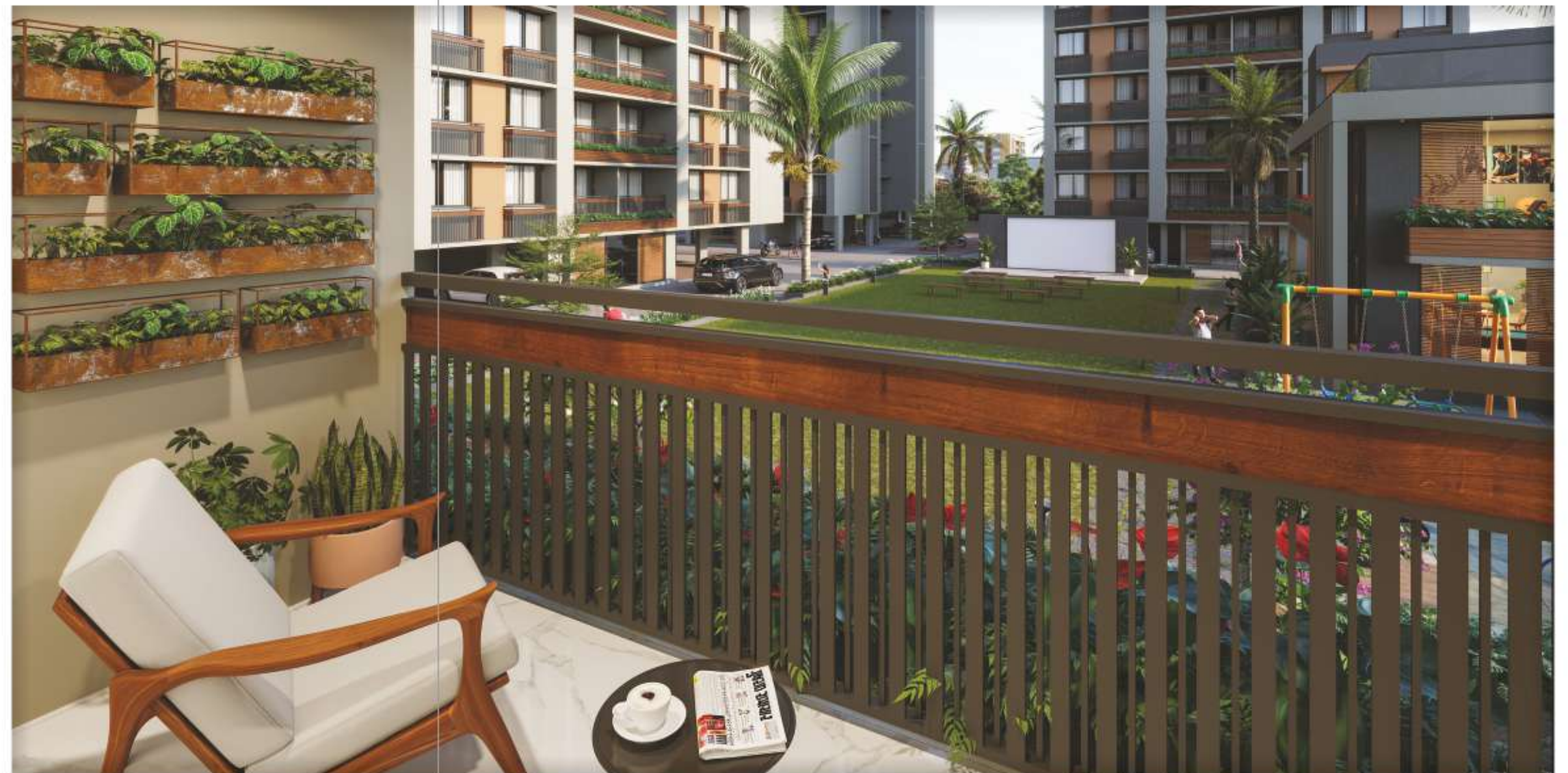




SKYLIFE

A LIFE WELL LIVED  
IS ITS OWN REWARD

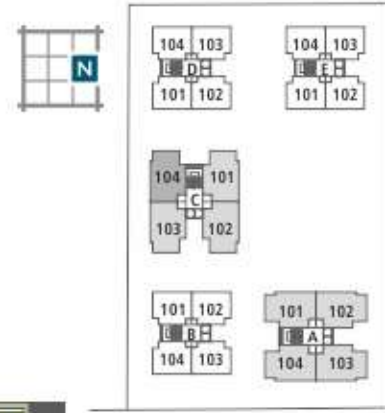
Skylife is all about living fully and enjoying each passing moments abundantly. Leave aside the hectic, agitated life and just indulge into calmness that is all around, blessed with soothing, lush greenery.



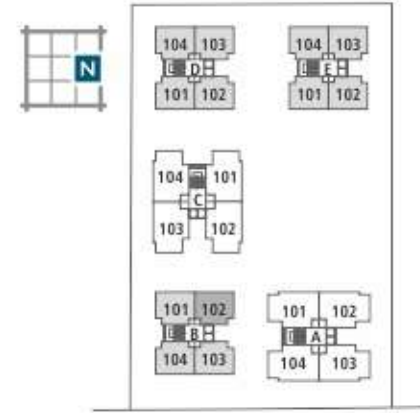




**BLOCK A, C  
3BHK UNIT**

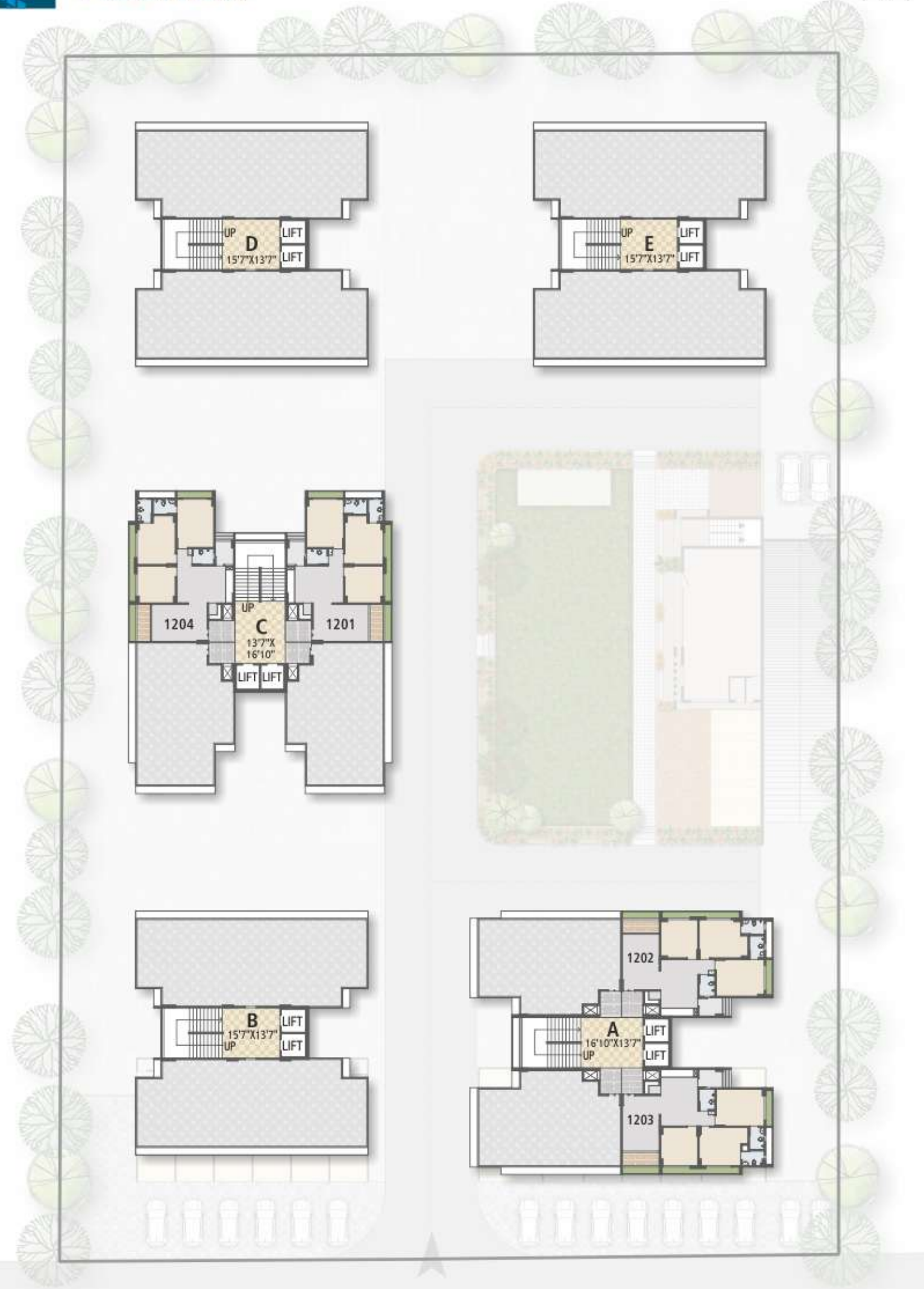


**BLOCK B, D, E  
2BHK UNIT**





# 12TH FLOOR PLAN





SKYLIFE

# SPECIFICATIONS

**ENTRANCE**  
Decorative main gate and compound wall

**RECEPTION, ELEVATOR & STAIRS (COMMON AREA)**  
Personal letter box, name & number plate for each flat  
Reception area with granite & vitrified flooring  
2 Automatic elevators  
Decorative lift entrance & foyer area  
Granite flooring in stairs

**POWER & ELECTRIFICATION**  
Standard quality ISI wires & modular switches  
MCB distribution panel  
Ample electric points  
A.C. point in drawing & master bedroom

**WALL FINISH**  
Internal mala plaster with putty finish

**FLOORING**  
800 x 800 vitrified tiles in drawing, dining, kitchen & 600 x 600 vitrified tiles in bedrooms

**KITCHEN**  
Platform with granite top & SS sink glazed tiles up to lintel level  
R.O. point

**DOORS & WINDOWS**  
Decorative main door with good quality fittings  
Powder coated aluminum section windows

**BATHROOM & PLUMBING**  
Glazed tiles up to lintel level  
Premium quality bath fittings & sanitaryware

**PARKING**  
Common parking at ground level & basement level

**INTERNAL ROAD**  
R.C.C. roads with paved blocks & street lights

**WATER SUPPLIES**  
One common bore-well with one underground & overhead water tanks

**GENERAL**  
Plenty of open space with children play area & senior citizen seating area  
DG set for lifts & ample common lights  
Fire safety  
Rooftop solar system (10 kw)

**Terms & Conditions**

• All the architectural and interior images in the brochure, are merely simulated interpretations using computer graphics to enhance the customer understanding and are not factual images. • The colour and general appearance of the flooring and wall tiles, sanitary ware & fittings, walls, ceilings, windows, doors, internal roads, trees, shrubbery etc. shown in the simulated computer graphics images are taken from the object libraries for the purpose of presentation and the prospective buyers of the concerned property are advised to refer to the construction specifications mentioned in the brochure. Additional amenities and/or utilities not mentioned or shown in the brochure but may be required as per the law, should be deemed to be forming part of the project by the purchaser. • All Furniture including wardrobes, other sofa furnishings inter-alia curtains, mattresses, bed linen, upholstery etc., lights and other electrical fixtures and appliances like air conditioners, refrigerators, TVs, telephones, laptops etc., any of the equipment, household accessories inter-alia crockery and cutlery, rugs, carpets, decorative pieces and wall hangings, wall papers, utensils etc., apparels and all other consumable and movable items shown in the simulated images do not form part of the sale of any property by the developer • All dimensions presented herein are approximate and the measurements are made from unfurnished surfaces. • All rights reserved with the developers to make any changes in the project and all the members shall abide by such changes. • GST, AMC/ AUDA charges along-with Torrent electrical charges including cable and Sub-station cost shall be borne by purchaser. Stamp duty, registration charges, or any other charges and taxes as & when levied by government or any of its body shall be borne by purchaser/buyer/legal possession holder. • GST at applicable rate is payable on the due amount and is non refundable. • This brochure is for restricted private circulation only and is for an easy display of the project. It should not be considered as a legal document with obligations for specific performance. It is meant for the purpose of conceptual presentation only. • Subject to Ahmedabad Jurisdiction only.



SCAN FOR LOCATION

Site: 108 GVK Road, Nr. Shyam Kutir 1, Hanspura, Ahmedabad, Gujarat 382330



SCAN FOR E-BROCHURE

Project by  
**HINDVA**  
Developers LLP  
Ahmedabad

Architect  
**SHAPERS360**  
ARCHITECTS & CONSULTANTS  
Ahmedabad

Structural Engineer  
**Shreeji Structural**  
Ahmedabad

Members at  
**aba** AHMEDABAD BUILDERS ASSOCIATION  
**GIHED CREDAI**  
Member

Rera No.: PR/GJ/AHMEDABAD/AHMEDABAD CITY/AUDA/MAA09970/280322  
Website: www.gujrera.gujarat.gov.in



Hindva - born as an instance of brilliance - is now being one of the fastest growing construction companies of Gujarat in India. It leads with an aim of focusing on all fields of civil engineering, designed with precision and great use of technology in qualitative construction fields. The dedicated and experienced team contributes its expertise together to turn this motive into reality. Hindva arose with a tag of being a premium brand in construction & real estate industry. Likewise, it has achieved an appellation by providing the paramount services, with endless amenities and fulfilling the essential needs of its clientele in all developments, whether it is a residential living or commercial business place. Most appreciated projects like Shantiniketan 1, 2 & 3, Shantiniketan Solitaire, Shantiniketan Business Centre along with new age look in SkyView, SkyBell, Celino, Pride and The Pavilion defines a testimonial to success of Hindva in Ahmedabad. The initiatives of Hindva, with well-managed service in the Real Estate sector, is deeply embedded in global culture and truly symbolize an innovative lifestyle.

## Our Prestigious Projects

Hindva's initial ventures named SHANTINIKETAN, offered a peaceful ambience, huge commercial spaces and facilities that grew with each iteration. Marking its foray in bonafide commercial structures, Hindva launched Shantiniketan Business Centre with 85 retail stores and office spaces while Shantiniketan-1 marks the group's first residential project.

Hindva Pavilion is the group's mall, that includes multi-cuisine restaurants, shopping centres, and multiplex theatre too. With its projects, Hindva is trying to enhance the lifestyle of people of Ahmedabad by providing them luxurious spaces amidst vibrant, natural surroundings.



Think **Positively** Network **Well** Exercise **Daily**  
 Live **Forever** Eat **Healthy** Work **Hard** Be **Happy**  
 Build **Faith** Worry **Less** Read **More** Stay **Strong**  
 Relax **Often** Love **Always** Volunteer **Freely**



**Ambitions** कल्पना **Advancement** सर्जनशीलता **Values** प्रयास **Execution** विकास



✉ ahmedabad@hindva.com    🌐 www.hindva.com    📺 /Hindva    📺 YouTube /Hindva    📺 /Hindva

Contact: +91 81409 11949

The Dreams...  
 Being Transformed into Reality

@ Surat



Execution Growth Advancement Efforts Values Imaginations Ambitions Creativity





**HINDVA**



Contact For Booking: +91 81409 11949