



**ईवन्ता**  
SHIVANTA

WHERE DREAMS COME HOME

## Our History

Is witnessing our present

### "Landmarks Built on Trust"

We build spaces, shape dreams and inspire lifestyle! Started in 1980, Deep Group's mission is to create a better lifestyle for people by building luxury residential structures. During the last two decades, we have changed the face of Ahmedabad with our ambitious projects.

## Achievements



10 M+  
Sq. Ft. of  
Construction



25+  
Landmarks



50000+  
Tree Planted



7500+  
Happy  
Families

## Awarded



INDRAPRASTH INDUSTRIAL & LOGISTICS HUB  
"WAREHOUSING PROJECT OF THE YEAR"  
of Realty+ Conclave & Excellence Awards 2020



BEST BRAND AWARD  
"GUJARAT BRAND LEADERSHIP AWARD"  
of ABP News Best Brand Award 2019 (Real Estate)



INDRAPRASTH KADAMB  
"BEST Residential Project(MID)"  
of CNBC Bajar Real Estate Awards 2017-18



MOST RELIABLE DEVELOPER  
"The Prestigious Real Estate Award"  
of CNBC Bajar Real Estate Awards 2015-16

## Proud Association



## Recent Accomplishments

Indraprasth Gulmohar (4 BHK)



Indraprasth  
Industrial & Logistics Hub  
(Warehouse)



Indraprasth Living (3 BHK)



Indraprasth Homes  
(2 BHK)

Indraprasth Greens (3 BHK)



Indraprasth Business Park  
(Corporate Offices)



Indraprasth Business House  
(Showrooms & Offices)



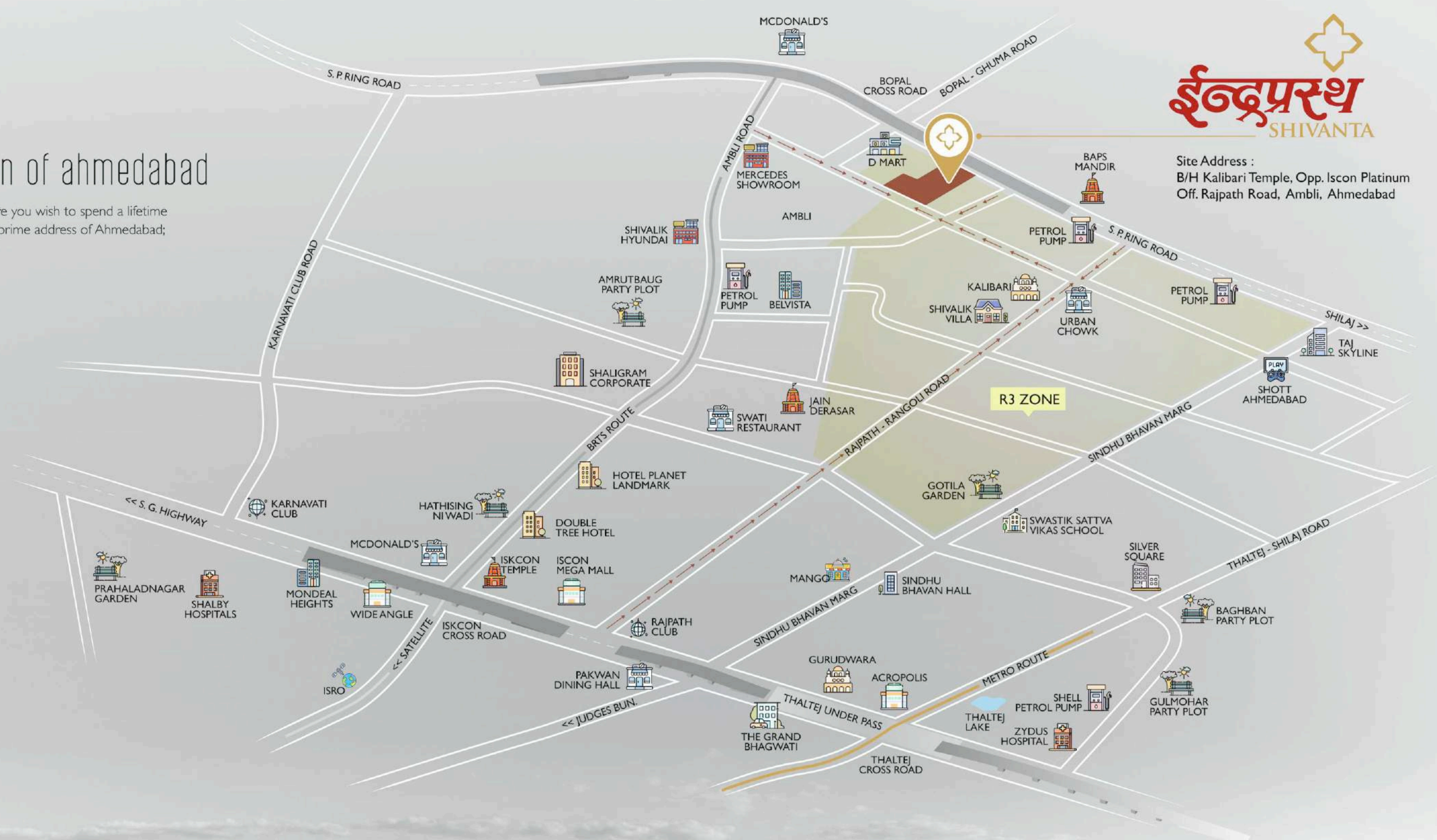


# reside at 'ambli' most desirable location of ahmedabad

Location is imperative while selecting a home where you wish to spend a lifetime with your family. Here is your chance to live at the prime address of Ahmedabad; having all the essential places in close proximity.



Site Address :  
B/H Kalibari Temple, Opp. Iscon Platinum  
Off. Rajpath Road, Ambli, Ahmedabad



## CONVENIENT

S.P. RING ROAD	0.0 KM
TAJ HOTEL	1.8 KM
ZYDUS HOSPITAL	6.3 KM
SINDHUBHAVAN MARG	1.6 KM
PVR ACROPOLIS	6.2 KM
ISCON MALL	4.3 KM
ISCON TEMPLE	4.3 KM
KARNAVATI CLUB	5.2 KM
WIDE ANGLE	5.0 KM
RAJPATH CLUB	4.2 KM







## ambience that oozes grandeur

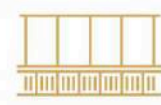
The vibe... The Aura... The Feel of this majestic development is simply amazing. As soon as you step in, you are bound to feel mesmerized by the opulence that surrounds you.



one of the  
tallest  
residential towers



elite  
amenities  
45+ amenities



elegant  
spaces  
spacious living







## architect's note

---

Architecture is an expression of values. Every creation stands tall reflecting a set of certain attributes. Open, modern, spacious, extravagant and most importantly ambient. These are the foremost attributes of Indraprasth Shivanta.

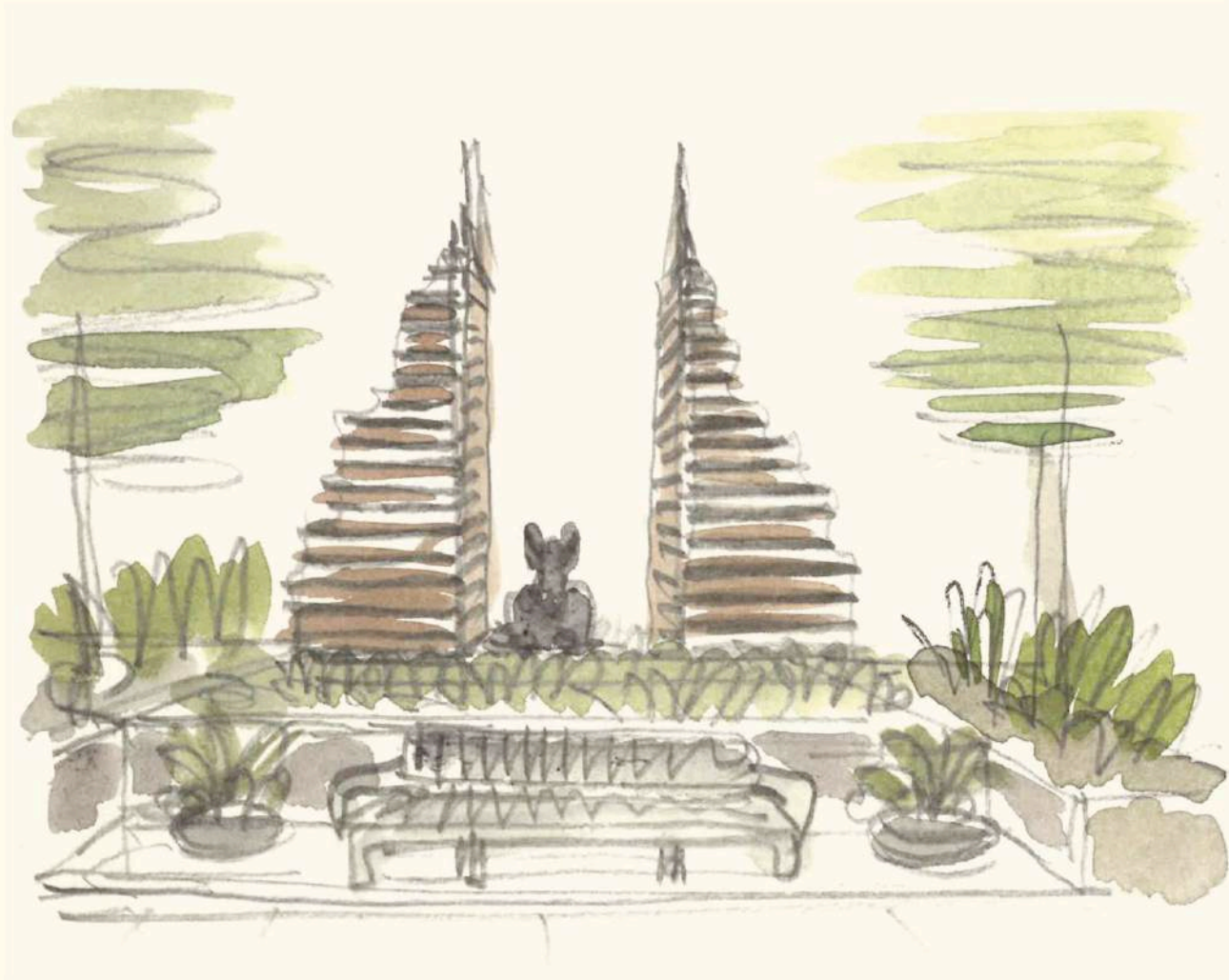
While designing it out aim was to create a space you will feel proud to own and flaunt. A space that has a certain enchanting quality about it. A space that exquisitely merges outdoor and indoor spaces. The beauty of architecture lies in the harmony of purpose and form. We have very meticulously conceived this development; imbibing modern conveniences, high-end amenities and elements of tranquil nature. It gifts its residents a wholesome lifestyle filled with joyful delights. This thoughtful, collaborative and lasting landmark has the ability to elevate the quality of life to altogether a new heights for those who dwell in it.

Ahmedabad's skyline is about become more dazzling; thanks to the glorious towers of Indraprasth Shivanta standing tall like the magnificent portrait of architectural beauty.

Architects & Landscape Designer



hiren patel architects





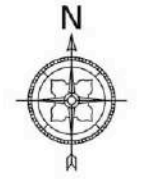
200' WIDE RING ROAD

60' T.P. WIDE ROAD



- LEGEND**
- |                    |                       |                           |
|--------------------|-----------------------|---------------------------|
| 01 ENTRANCE GATE   | 14 CAFÉ / LOUNGE      | 26 FOREST TRAIL           |
| 02 SECURITY CABIN  | 14A LIBRARY           | 27 PARTY LAWN             |
| 03 WATER BODY      | 15 TODDLER AREA       | 28 GAZEBO                 |
| 04 ENTRANCE PLAZA  | 16 INDOOR GAMES       | 29 SQUASH COURT           |
| 05 ENTRANCE LOUNGE | 17 CLUB ENTRANCE      | 30 SKATING / CYCLING RING |
| 06 ENTRANCE FOYER  | 18 SWIMMING POOL      | 31 KIDS PLAY AREA         |
| 07 COMMUNITY SPACE | 19 KIDS POOL          | 32 TEMPLE                 |
| 08 KITCHEN         | 20 HYDROTHERAPY SPA   | 33 DROP OFF PLAZA         |
| 09 METER ROOM      | 21 DECK               | 34 SPACE FOR SERVICES     |
| 10 MALE TOILET     | 22 MULTIPURPOSE COURT | 35 GARBAGE ROOM           |
| 11 COMMON TOILET   | 23 OUTDOOR SEATING    | 36 RAMP                   |
| 12 SITE OFFICE     | 24 AMPHITHEATER       | 37 PARKING                |
| 13 SEATING         | 25 URBAN ORCHARD      | 38 SHOP PARKING           |

- club house**
- |                 |
|-----------------|
| 39 HOME THEATER |
| 40 MASSAGE      |
| 41 SAUNA        |
| 42 STEAM        |
| 43 TOILET       |
| 44 GYM-CARDIO   |
| 45 GYM-WEIGHTS  |



DN TO BASEMENT

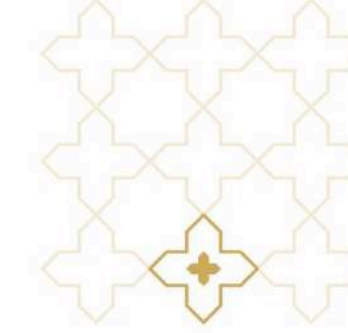





 typical  
 floor plan

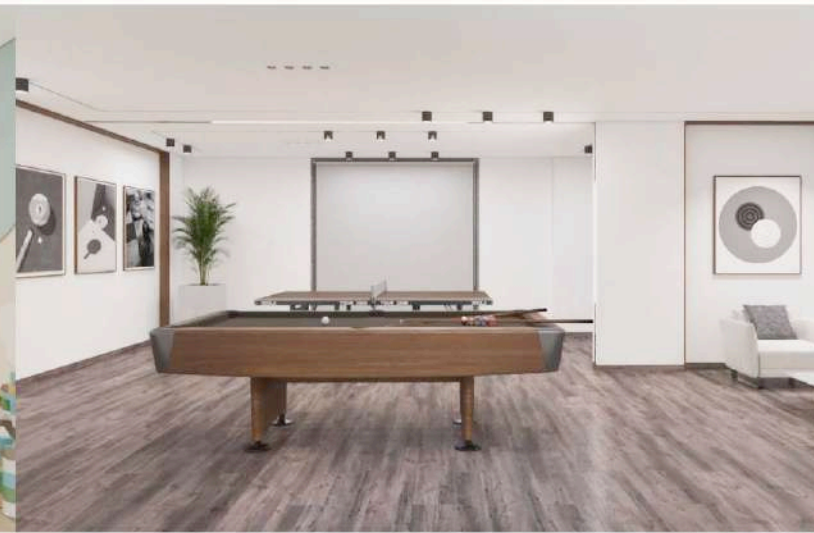






## elite amenities await you every step of the way

Enjoy the most fantastic lifestyle amenities that redefine the definition of modern privileges and utmost indulgences. It's a life all wishes for but only the selected few truly gets to relish it.



  
LOUNGE SIT OUT

  
COMMUNITY SPACE

  
TODDLER ZONE

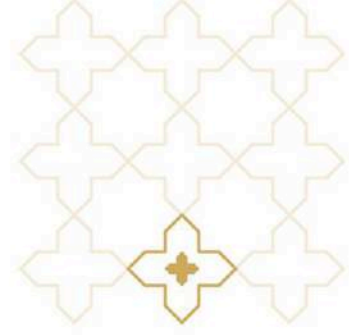
  
INDOOR GAMES

  
SQUASH COURT

  
BASKETBALL COURT

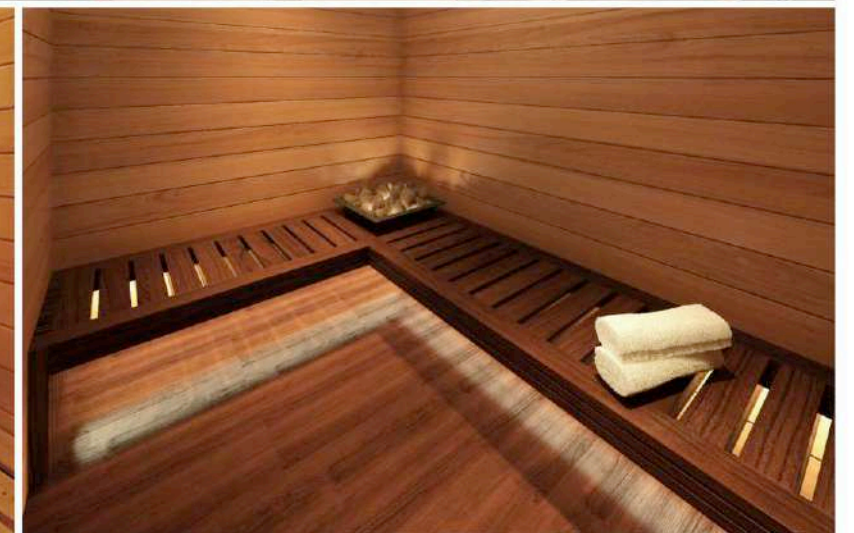
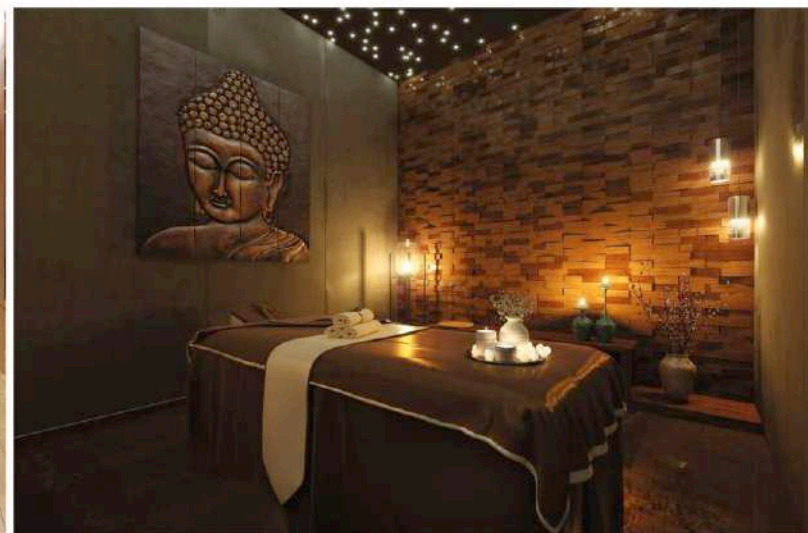
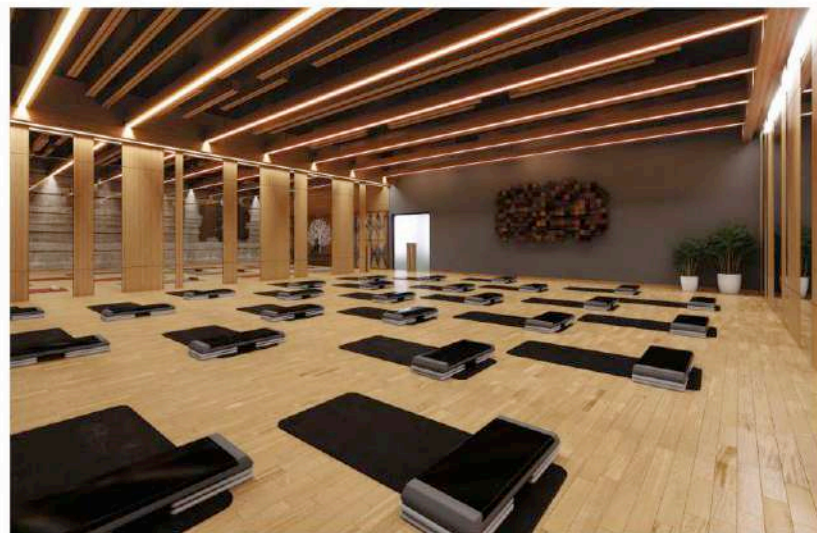






# explore the infinite possibilities of rejuvenation

Stay fit and fine thanks to the amazing fitness facilities designed to keep you in healthy and beautiful. Enjoy a block buster movie on a big screen with your friends and family in home theatre.



GYM-WEIGHTS



GYM-CARDIO



MASSAGE



HOME THEATER



STEAM



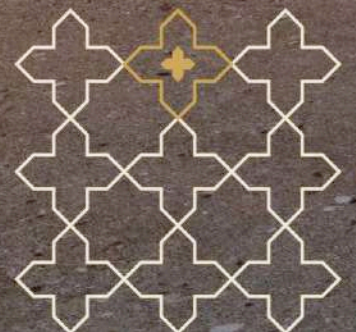
SAUNA





# thoughtful by design

You haven't truly experienced luxury, until you've lived here. Here, every corner is adorned with class and comfort making your everyday filled with delightful moments.



vehicle free zone

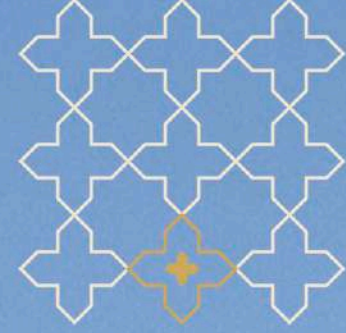


abundant landscape



secured gated community





# enjoy resort like living, every day

Why should you go to a resort or a club;  
when you get to enjoy all those wonderful experiences right at your door step?  
Staying in becomes fun like never before.



exclusive  
clubhouse



sparkling  
swimming pool



outdoor  
sports zone







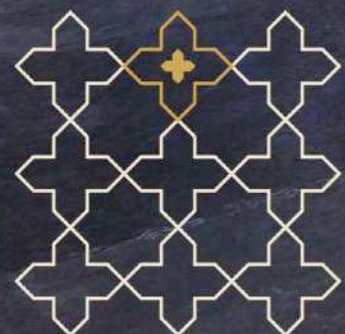
fantastic  
club lifestyle







find inner  
peace

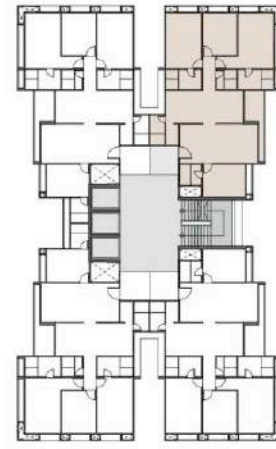






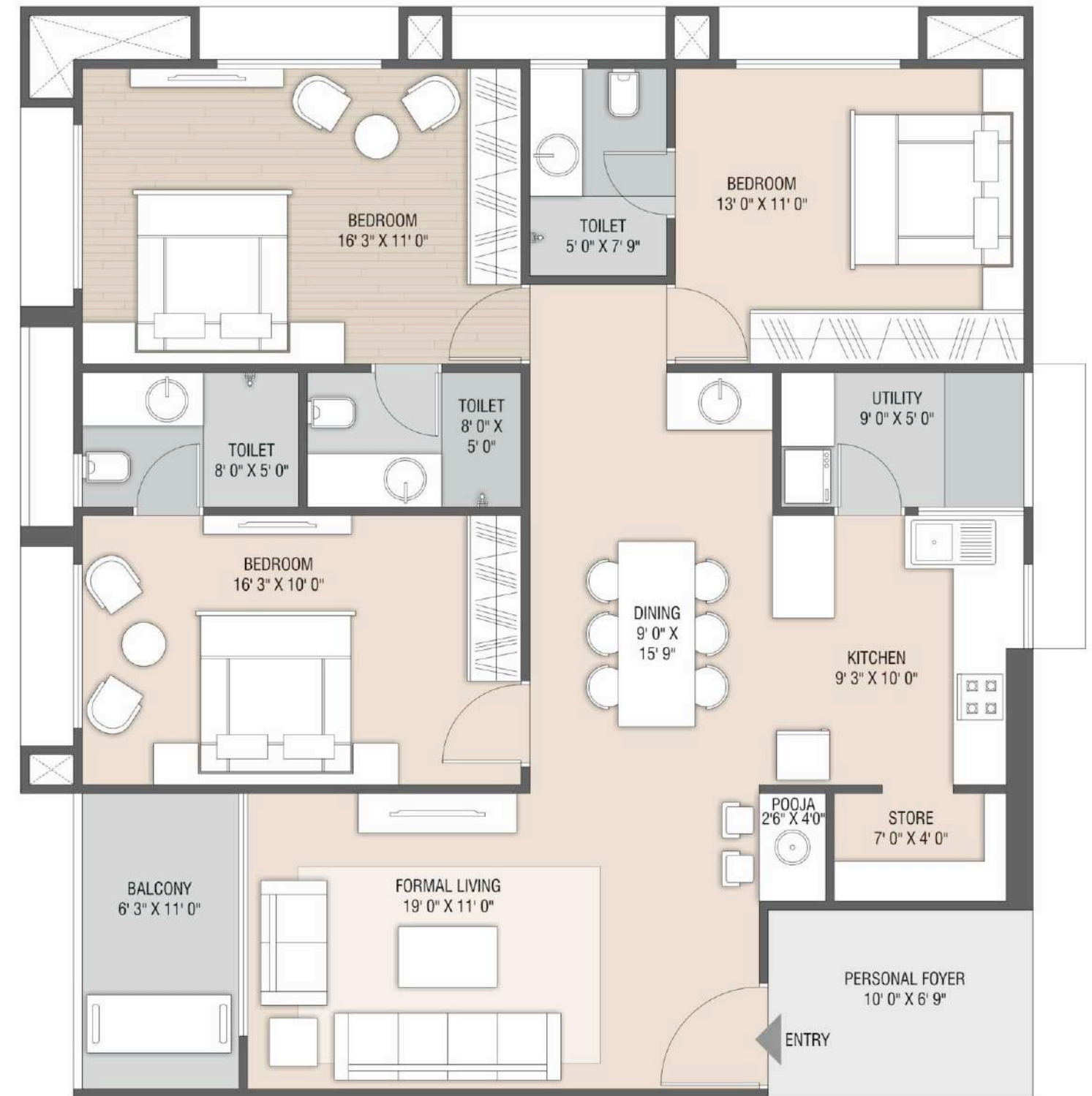
# 4 BHK UNIT PLAN

(TOWER - A, B & C)



# 3 BHK UNIT PLAN

(TOWER - D & E)

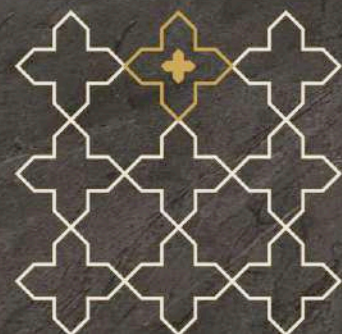






## an opus of magnificence

Stunning shapes, textures, colors and spaces come together to create a masterpiece; you'll love to flaunt. You have every reason to congratulate yourself for the choice you have made.



large living  
& dining

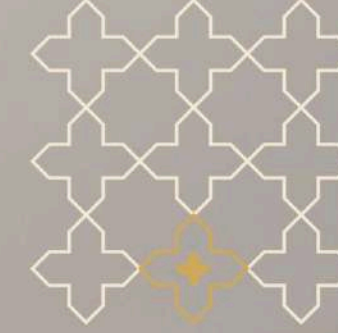


3 sides open  
homes



extended  
balconies





## cheers to the good life

A home with abundant space for you to cherish. Where sunlight and cool breeze are your permanent roommates and all the luxuries of the world come together to bring a big smile on your face.



cross  
air ventilation



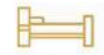
amazing  
view



ample  
wardrobe space



## Planning



2 Master Bedrooms



Spacious Bathrooms



Lavish Balcony



Ample Storage Spaces



Granite Platform



Veneer Finished Flush Doors



Individually Central  
Air Conditioned Units



Double Charged Vitrified Tiles  
in Drawing, Dining,  
Kitchen & Passages

## Bathroom



Separate Dry / Wet Area



Tiles Dado & Flooring



High Quality Sanitary Ware  
CP Fitting



Separate Wardrobe Area  
in Master Bath

## Bedroom



Aluminium Windows to Ensure  
Maximum Light & Ventilation



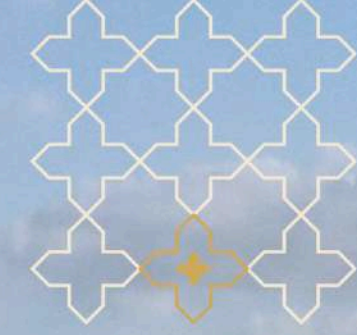
Wooden Laminate Flooring in  
Master Bedroom



### Legal Notes

• Stamp Duty, Registration Charges, Legal Documentation Charges, Advance Maintenance, Fix Maintenance Charges, AMC/AUDA Charges and Torrent Electrical Charges including cable and sub-station cost shall be borne by the purchaser. • Service Tax, VAT, GST any additional charges, taxes, cess or duties levied by the government / local authorities prior, during or after the completion of the scheme will be borne by the purchaser. • In the interest of the continual developments in design and quality of construction, the developer reserves all rights to make suitable changes in the scheme and all the purchasers shall abide by such changes. • Changes / Alteration of any nature, including the elevations, exterior color scheme of the apartments or any other change affecting the overall design concept and outlook of the scheme are strictly not permitted during or after the completion of the scheme. • The brochure is intended only to convey the essential design and technical features of the scheme and shall not be construed to form part of the legal document. Agreement for sale shall be final and binding to the purchaser. • All elements, objects, treatments, materials, equipments and colour schemes shown are artist's impressions. Actuals may be different as per architect's designs. • All dimensions shown here are unfinished to an unfinished wall and of the longest measure of the area.





# where the world looks up to you

A marvellous creation flaunts an opulent design, ultra-luxurious abodes,  
beautiful open spaces and bespoke amenities.  
Beyond an exquisite architectural structure, this is a majestic way of living.





Project By



Developers

Deep Infraprojects LLP

Indraprasth Shivanta,  
B/H Kalibari Temple, Opp. Iscon Platinum,  
Off. Rajpath Road, Ambli, Ahmedabad

Email : shivanta@deepgroup1980.com

Web : www.deepgroup1980.com

Contact No. : 75750 59000

Architects & Landscape Designer



Structural Consultant



RERA Reg. No.

PR/GJ/AHMEDABAD/AHMEDABAD CITY/AUDA/MAA09198/181021

[www.gujrera.gujarat.gov.in](http://www.gujrera.gujarat.gov.in)