



eliséo.ii

4 BHK LIVING AT OFF, CLIANTHA RD, SARKHEJ - OKAF



where
luxury
meets
legacy



EYEVIEW
DESIGN STUDIO
91 9928 277 654



EYEVUE
3D DESIGN STUDIO
+91 9228 277 654

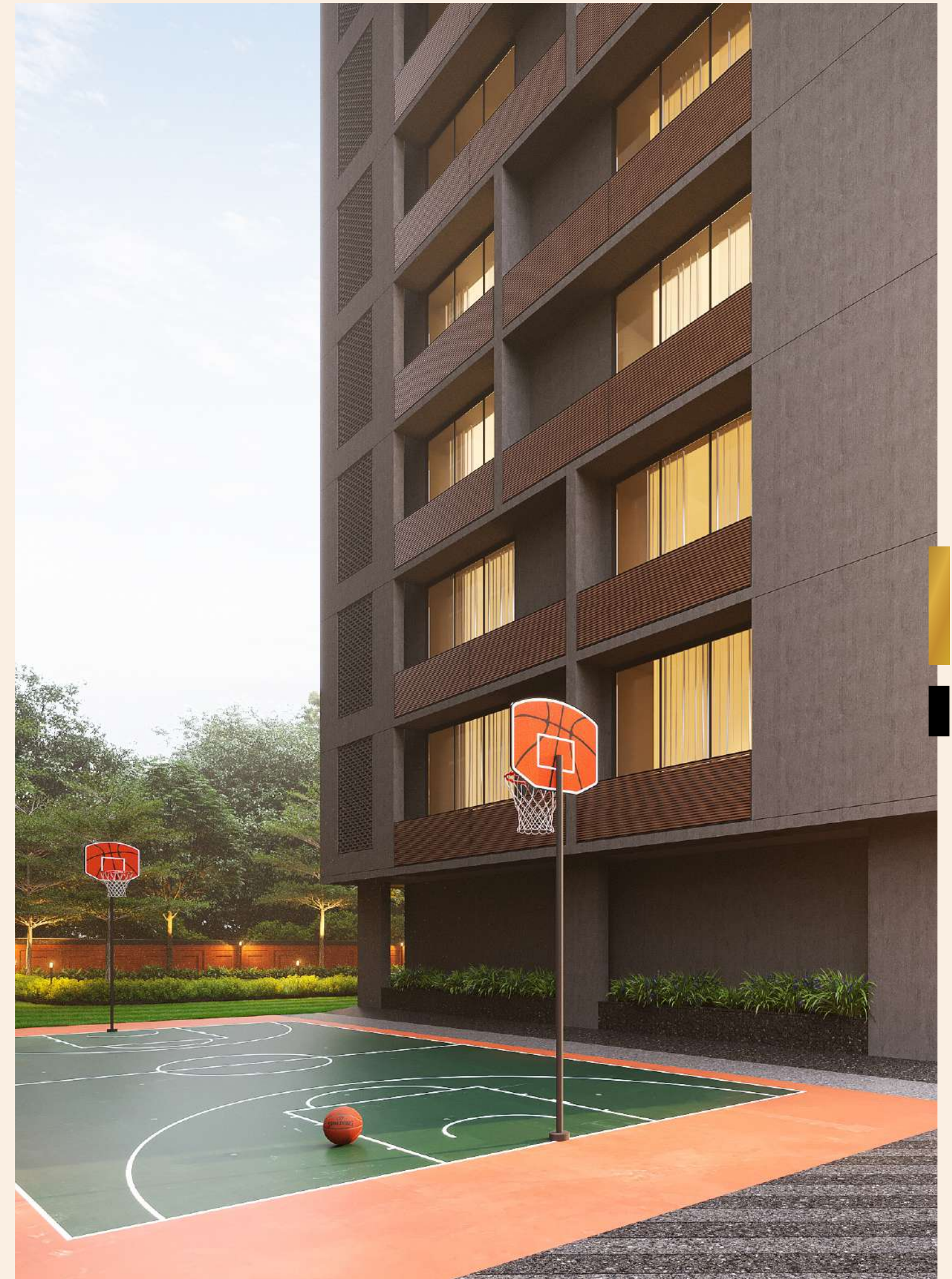



EYEVUE

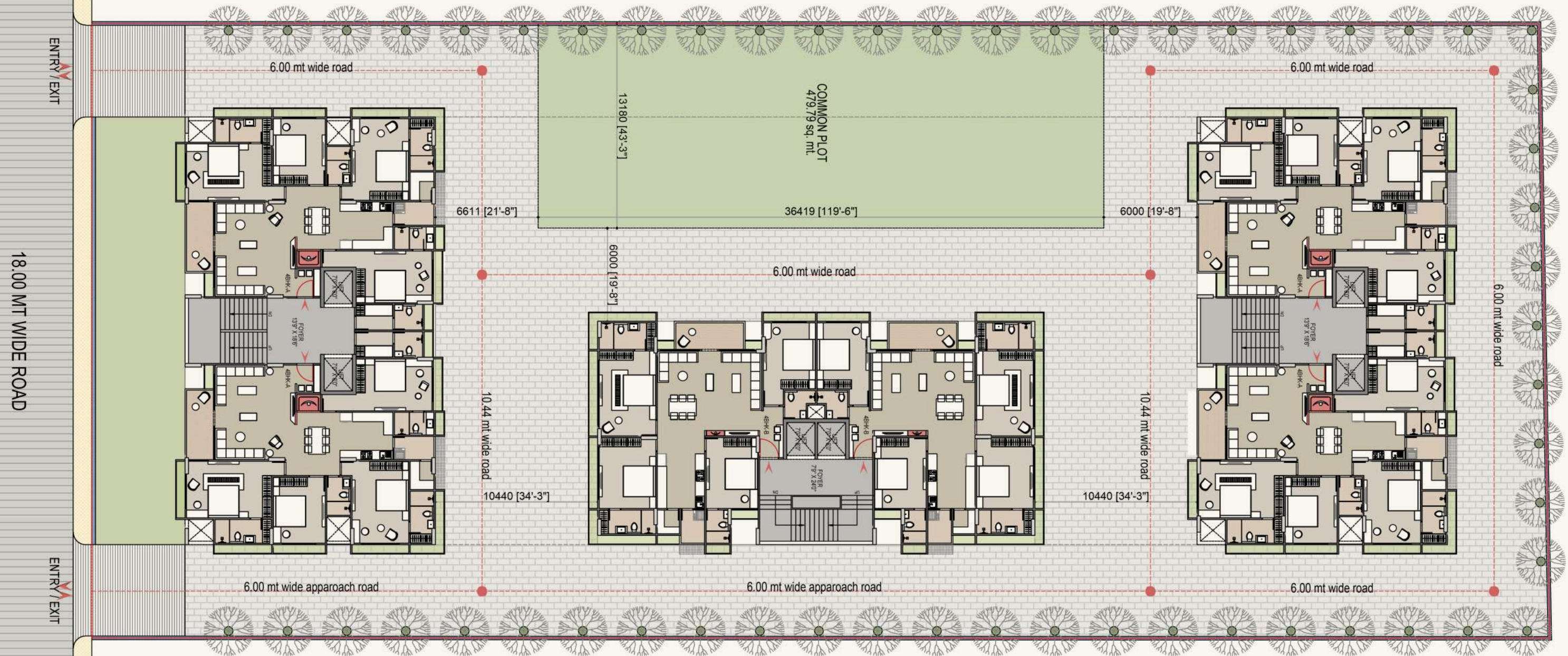


- MULTIPURPOSE HALL
- LIBRARY
- DECK
- KIDS PLAY AREA
- WATER BODY
- INDOOR GAMES
- GYMNASIUM
- CLASS ELEVATION
- GARDEN
- AMPLE PARKING
- SIT-OUT SPACE
- PICKUP-DROP OFF ZONE
- SENIOR CITIZEN SIT OUT
- 24X7 SECURITY
- CCTV SURVEILLANCE
- FIRE SAFETY





TYPICAL FLOOR



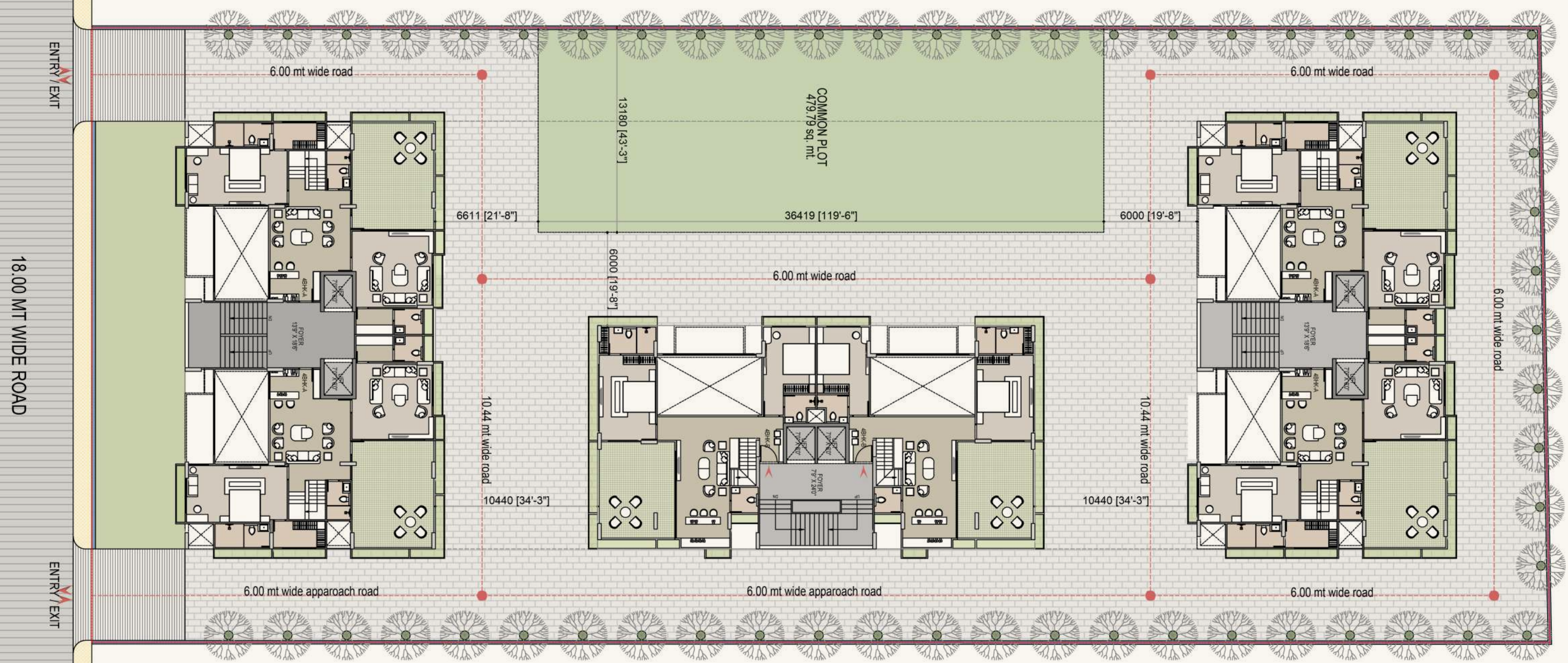
18.00 MT WIDE ROAD



13 TH FLOOR



14 TH FLOOR



ENTRY / EXIT

ENTRY / EXIT





4 BHK-A





4 BHK-B





4 BHK-A
PENTHOUSE LOWER LEVEL





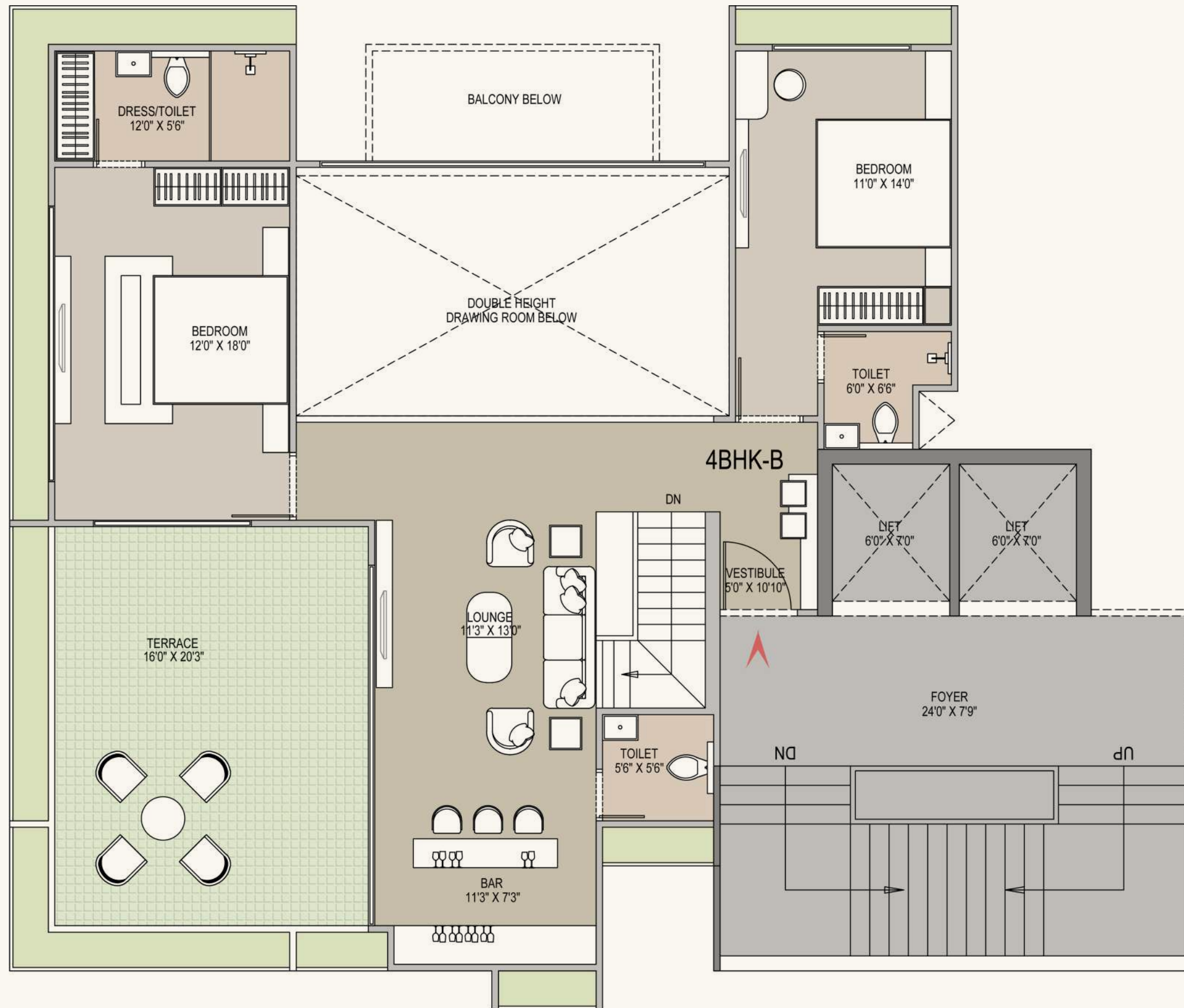
4 BHK-A
PENTHOUSE UPPER LEVEL





4 BHK-B
PENTHOUSE LOWER LEVEL





4 BHK-B
PENTHOUSE UPPER LEVEL








VIEW
DESIGN STUDIO
8 277 654



eliséo.ii

4 BHK LIVING AT SHELA





specifications

STRUCTURE

Earthquake resistant R.C.C. frame structure
as per structural engineer's design

FLOORING

Vitrified tiles flooring in all rooms

KITCHEN

Granite platform with S.S.sink
Glazed tiles dado up to lintel level
Provision for R.O. point with required electrical & plumbing point

BATHROOMS/TOILET

Anti-skid flooring
Glazed tiles dado up to lintel level
Branded sanitary ware fittings

DOORS & WINDOWS

Wooden door frame with decorative main door,
all other flush door with ss fitting

WASH AREA

Anti-skid flooring
Provision for washing machine with electrical and plumbing point

ELECTRIFICATION

Concealed copper wiring with M.C.B / E.L.C.B.
Branded modular switches with sufficient electrical points in all rooms
Electrical point for A.C. in drawing room and bedrooms

PLUMBING

Branded U.P.V.C. pipes for regular water supply
Branded C.P.V.C. pipes for hot water supply
Branded P.V.C pipe for drain

FITTING

Concealed plumbing fitting with standard quality
both fitting and sanitary ware.

TERRACE.

Open terrace with water proof treatment

PLASTER & PAINTS

Inside : Single coat mala plaster with wall putty finish
Outside : Double coat mala plaster with texture or
exterior paint for attractive elevation

